

Product datasheet

Esomeprazole sodium ab120500

画像数 1

製品の概要

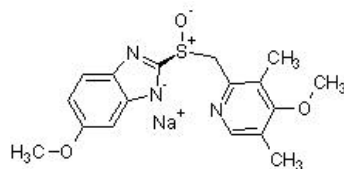
製品名	Esomeprazole sodium
製品の詳細	H ⁺ /K ⁺ -ATPase (proton pump) inhibitor
生理活性の詳細	H ⁺ /K ⁺ -ATPase (proton pump) inhibitor (IC ₅₀ = 2.3 μM). S-enantiomer of omeprazole. Attenuates intestinal mucosal barrier damage and can promote healing of gastric lesions in rats. Also inhibits Cytochrome P450 2C19 (CYP2C9), CYP2C19 and CYP3A4 (K _i values are 81.5, 8.6 and 46.6 μM, respectively).
精製度	> 99%

製品の特性

体系名 6-Methoxy-2-[(S)-[(4-methoxy-3,5-dimethyl-2-pyridinyl)methyl]sulfinyl]-1H-benzimidazole sodium salt

分子量 367.40

構造式



分子式 C₁₇H₁₈N₃NaO₃S

CAS 番号 161796-78-7

PubChem 登録番号 23674541

保存方法 Store at -20°C. Store under desiccating conditions. The product can be stored for up to 12 months.

溶解性 Soluble in water to 100 mM, in ethanol to 100 mM and in DMSO to 100 mM

使用に関する注意 Wherever possible, you should prepare and use solutions on the same day. However, if you need to make up stock solutions in advance, we recommend that you store the solution as aliquots in tightly sealed vials at -20°C. Generally, these will be useable for up to one month. Before use, and prior to opening the vial we recommend that you allow your product to equilibrate to room temperature for at least 1 hour.

Need more advice on solubility, usage and handling? Please visit our [frequently asked questions \(FAQ\) page](#) for more details.

SMILES 線形表記 [Na+].Cc3c(OC)c(C)cnc3CS(=O)c1[n-]c2cc(ccc2n1)OC

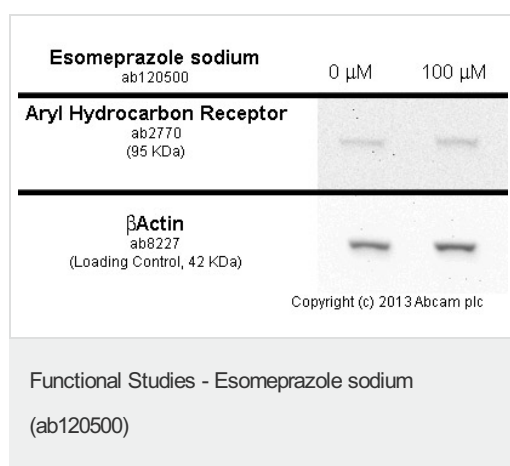
アプリケーション

Our [Abpromise guarantee](#) covers the use of **ab120500** in the following tested applications.

The application notes include recommended starting dilutions; optimal dilutions/concentrations should be determined by the end user.

アプリケーション	Abreviews	特記事項
Functional Studies		Use at an assay dependent concentration.

画像



MDA-MB-231 cells were incubated at 37°C for 6h with vehicle control (0 μM) and 100 μM of esomeprazole sodium (ab120500). Increased expression of aryl hydrocarbon receptor (ab2770) correlates with an increase in esomeprazole sodium concentration, as described in literature.

Whole cell lysates were prepared with RIPA buffer (containing protease inhibitors and sodium orthovanadate), 20 μg of each were loaded on the gel and the WB was run under reducing conditions. After transfer the membrane was blocked for an hour using 3% milk before being incubated with ab2770 at 2 μg/ml and ab8226 at 1 μg/ml overnight at 4°C. Antibody binding was detected using an anti-mouse antibody conjugated to HRP (ab97040) at 1/10000 dilution and visualised using ECL development solution.

Please note: All products are "FOR RESEARCH USE ONLY AND ARE NOT INTENDED FOR DIAGNOSTIC OR THERAPEUTIC USE, NOT FOR USE IN HUMANS"

Our Abpromise to you: Quality guaranteed and expert technical support

- Replacement or refund for products not performing as stated on the datasheet
- Valid for 12 months from date of delivery
- Response to your inquiry within 24 hours
- We provide support in Chinese, English, French, German, Japanese and Spanish

- Extensive multi-media technical resources to help you
- We investigate all quality concerns to ensure our products perform to the highest standards

If the product does not perform as described on this datasheet, we will offer a refund or replacement. For full details of the Abpromise, please visit <http://www.abcam.co.jp/abpromise> or contact our technical team.

Terms and conditions

- Guarantee only valid for products bought direct from Abcam or one of our authorized distributors
- Abcam biochemicals are novel compounds and we have not tested their biological activity in house. Please use the literature to identify how to use these products effectively. If you require further assistance please contact the scientific support team