

Product datasheet

Anti-Eph receptor A2 antibody [EPR4761] ab110716

リコンビナント RabMAb®

画像数 1

製品の概要

製品名	Anti-Eph receptor A2 antibody [EPR4761]
製品の詳細	Rabbit monoclonal [EPR4761] to Eph receptor A2
由来種	Rabbit
アプリケーション	適用あり: WB 適用なし: Flow Cyt, ICC, IHC-P or IP
種交差性	交差種: Human
免疫原	Synthetic peptide within Human Eph receptor A2 aa 950-1050 (C terminal). The exact sequence is proprietary.
ポジティブ・コントロール	A431, 293T, SH SY5Y, and BxPC3 cell lysates.
特記事項	Mouse, Rat: We have preliminary internal testing data to indicate this antibody may not react with these species. Please contact us for more information.

Our RabMAb® technology is a patented hybridoma-based technology for making rabbit monoclonal antibodies. For details on our patents, please refer to [RabMAb® patents](#)

This product is a recombinant rabbit monoclonal antibody.

製品の特性

製品の状態	Liquid
保存方法	Shipped at 4°C. Store at -20°C. Stable for 12 months at -20°C.
バッファー	PBS 49%, Sodium azide 0.01%, Glycerol 50%, BSA 0.05%
精製度	Tissue culture supernatant
ポリ/モノ	モノクローナル
クローン名	EPR4761
アイソタイプ	IgG

アプリケーション

Our [Abpromise guarantee](#) covers the use of **ab110716** in the following tested applications.

The application notes include recommended starting dilutions; optimal dilutions/concentrations should be determined by the end user.

アプリケーション	Abreviews	特記事項
----------	-----------	------

WB 1/1000 - 1/10000. Predicted molecular weight: 108 kDa.

追加情報 Is unsuitable for Flow Cyt, ICC, IHC-P or IP.

ターゲット情報

機能 Receptor for members of the ephrin-A family. Binds to ephrin-A1, -A3, -A4 and -A5. Plays an important role in angiogenesis and tumor neovascularization. The recruitment of VAV2, VAV3 and PI3-kinase p85 subunit by phosphorylated EPHA2 is critical for EFNA1-induced RAC1 GTPase activation and vascular endothelial cell migration and assembly (By similarity). Induces apoptosis in a p53/TP53-independent, caspase-8-dependent manner.

組織特異性 Expressed in brain and glioma tissue and glioma cell lines (at protein level). Expressed most highly in tissues that contain a high proportion of epithelial cells, e.g., skin, intestine, lung, and ovary.

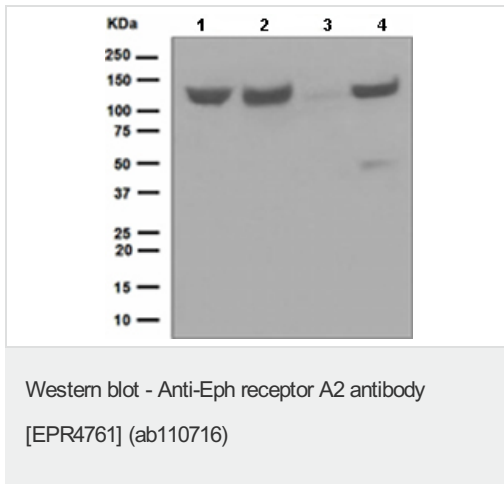
関連疾患 Genetic variations in EPHA2 are the cause of susceptibility to cataract cortical age-related type 2 (ARCC2) [MIM:613020]. A developmental punctate opacity common in the cortex and present in most lenses. The cataract is white or cerulean, increases in number with age, but rarely affects vision.
Defects in EPHA2 are the cause of cataract posterior polar type 1 (CTPP1) [MIM:116600]. A subcapsular opacity, usually disk-shaped, located at the back of the lens. It can have a marked effect on visual acuity.

配列類似性 Belongs to the protein kinase superfamily. Tyr protein kinase family. Ephrin receptor subfamily. Contains 2 fibronectin type-III domains.
Contains 1 protein kinase domain.
Contains 1 SAM (sterile alpha motif) domain.

翻訳後修飾 Activated by EFNA1 via tyrosine phosphorylation. Phosphorylated residues Tyr-588 and Tyr-594 are required for binding VAV2 and VAV3 while phosphorylated residues Tyr-735 and Tyr-930 are required for binding PI3-kinase p85 subunit. These phosphorylated residues are critical for recruitment of VAV2 and VAV3 and PI3-kinase p85 subunit which transduce downstream signaling to activate RAC1 GTPase and endothelial cell migration. They also play a critical role in transducing EPHA2 signaling in vascular endothelial cells during tumor angiogenesis.

細胞内局在 Membrane.

画像



All lanes : Anti-Eph receptor A2 antibody
[EPR4761] (ab110716) at 1/1000 dilution

Lane 1 : A431 cell lysate

Lane 2 : 293T cell lysate

Lane 3 : SH SY5Y cell lysate

Lane 4 : BxPC3 cell lysate

Lysates/proteins at 10 µg per lane.

Predicted band size: 108 kDa

Please note: All products are "FOR RESEARCH USE ONLY AND ARE NOT INTENDED FOR DIAGNOSTIC OR THERAPEUTIC USE"

Our Abpromise to you: Quality guaranteed and expert technical support

- Replacement or refund for products not performing as stated on the datasheet
- Valid for 12 months from date of delivery
- Response to your inquiry within 24 hours
- We provide support in Chinese, English, French, German, Japanese and Spanish
- Extensive multi-media technical resources to help you
- We investigate all quality concerns to ensure our products perform to the highest standards

If the product does not perform as described on this datasheet, we will offer a refund or replacement. For full details of the Abpromise, please visit <http://www.abcam.co.jp/abpromise> or contact our technical team.

Terms and conditions

- Guarantee only valid for products bought direct from Abcam or one of our authorized distributors