

## Product datasheet

# Anti-Eph receptor A1 antibody ab65074

### 画像数 2

#### 製品の概要

製品名	Anti-Eph receptor A1 antibody
製品の詳細	Rabbit polyclonal to Eph receptor A1
特異性	This antibody detects endogenous levels of total Eph receptor A1 protein.
アプリケーション	<b>適用あり:</b> WB, ICC/IF, ELISA
種交差性	<b>交差種:</b> Human
免疫原	Synthetic peptide (Human) from an internal region of Eph receptor A1.
ポジティブ・コントロール	WB: Extracts from COLO205 cells. ICC/IF: HeLa cells.

#### 製品の特性

製品の状態	Liquid
保存方法	Shipped at 4°C. Upon delivery aliquot and store at -20°C. Avoid freeze / thaw cycles.
バッファー	Preservative: 0.02% Sodium Azide Constituents: 50% Glycerol, PBS (without Mg <sup>2+</sup> and Ca <sup>2+</sup> ), 150mM Sodium chloride, pH 7.4
精製度	Immunogen affinity purified
ポリ/モノ	ポリクローナル
アイソタイプ	IgG

#### アプリケーション

Our [Abpromise guarantee](#) covers the use of **ab65074** in the following tested applications.

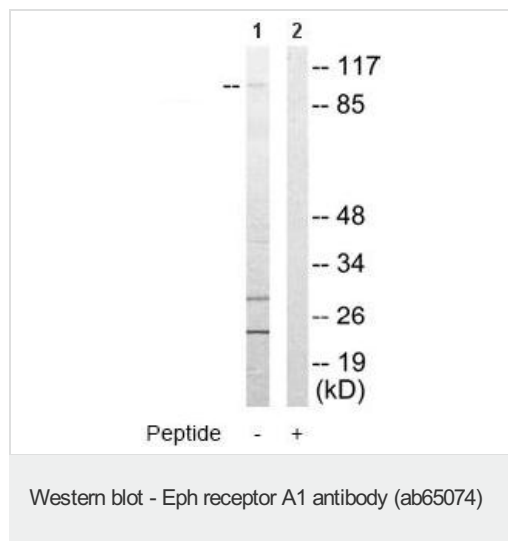
The application notes include recommended starting dilutions; optimal dilutions/concentrations should be determined by the end user.

アプリケーション	Abreviews	特記事項
WB		1/500 - 1/1000. Detects a band of approximately 108 kDa (predicted molecular weight: 108 kDa).
ICC/IF		1/500 - 1/1000.
ELISA		1/10000.

## ターゲット情報

<b>機能</b>	Receptor tyrosine kinase which binds promiscuously membrane-bound ephrin-A family ligands residing on adjacent cells, leading to contact-dependent bidirectional signaling into neighboring cells. The signaling pathway downstream of the receptor is referred to as forward signaling while the signaling pathway downstream of the ephrin ligand is referred to as reverse signaling. Binds with a low affinity EFNA3 and EFNA4 and with a high affinity to EFNA1 which most probably constitutes its cognate/functional ligand. Upon activation by EFNA1 induces cell attachment to the extracellular matrix inhibiting cell spreading and motility through regulation of ILK and downstream RHOA and RAC. Plays also a role in angiogenesis and regulates cell proliferation. May play a role in apoptosis.
<b>組織特異性</b>	Overexpressed in several carcinomas.
<b>配列類似性</b>	Belongs to the protein kinase superfamily. Tyr protein kinase family. Ephrin receptor subfamily. Contains 1 Eph LBD (Eph ligand-binding) domain. Contains 2 fibronectin type-III domains. Contains 1 protein kinase domain. Contains 1 SAM (sterile alpha motif) domain.
<b>翻訳後修飾</b>	Phosphorylated. Autophosphorylation is stimulated by its ligand EFNA1. Ubiquitinated.
<b>細胞内局在</b>	Cell membrane.

## 画像



**All lanes** : Anti-Eph receptor A1 antibody (ab65074) at 1/500 dilution

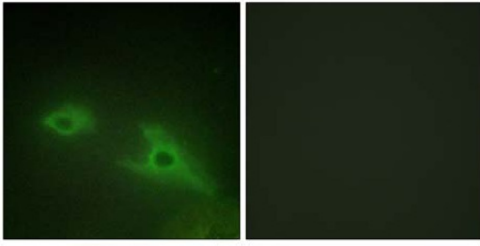
**Lane 1** : Extracts from COLO205 cells

**Lane 2** : Extracts from COLO205 cells with blocking peptide at 5 µg

Lysates/proteins at 5 µg per lane.

**Predicted band size** : 108 kDa

**Observed band size** : 108 kDa



Peptide - +

Immunocytochemistry/ Immunofluorescence - Eph receptor A1 antibody (ab65074)

Immunofluorescence analysis of HeLa cells ab65074 (1/50).

The left panel is in the absence of blocking peptide, whereas the right panel is in the presence of blocking peptide.

**Please note:** All products are "FOR RESEARCH USE ONLY AND ARE NOT INTENDED FOR DIAGNOSTIC OR THERAPEUTIC USE"

### Our Abpromise to you: Quality guaranteed and expert technical support

- Replacement or refund for products not performing as stated on the datasheet
- Valid for 12 months from date of delivery
- Response to your inquiry within 24 hours
- We provide support in Chinese, English, French, German, Japanese and Spanish
- Extensive multi-media technical resources to help you
- We investigate all quality concerns to ensure our products perform to the highest standards

If the product does not perform as described on this datasheet, we will offer a refund or replacement. For full details of the Abpromise, please visit <http://www.abcam.co.jp/abpromise> or contact our technical team.

### Terms and conditions

- Guarantee only valid for products bought direct from Abcam or one of our authorized distributors