


## Product datasheet

### Anti-EEF1G antibody ab72368

★★★★★ 1 Abreviews 3 References 画像数 6

#### 製品の概要

製品名	Anti-EEF1G antibody
製品の詳細	Rabbit polyclonal to EEF1G
由来種	Rabbit
アプリケーション	適用あり: ICC/IF, IHC-P, WB, IP
種交差性	交差種: Mouse, Human, Monkey 交差が予測される動物種: Chimpanzee, Rhesus monkey, Gorilla 
免疫原	Synthetic peptide from a region between residue 200 and 250 of human EEF1G, NP_001395.1.
ポジティブ・コントロール	Whole cell lysate from Hela, 293T and NIH3T3 cells.

#### 製品の特性

製品の状態	Liquid
保存方法	Shipped at 4°C. Upon delivery aliquot and store at -20°C. Avoid freeze / thaw cycles.
バッファー	Preservative: 0.09% Sodium Azide Constituents: 0.1% BSA, Tris buffered saline
精製度	Immunogen affinity purified
ポリ/モノ	ポリクローナル
アイソタイプ	IgG

#### アプリケーション

Our [Abpromise guarantee](#) covers the use of **ab72368** in the following tested applications.

The application notes include recommended starting dilutions; optimal dilutions/concentrations should be determined by the end user.

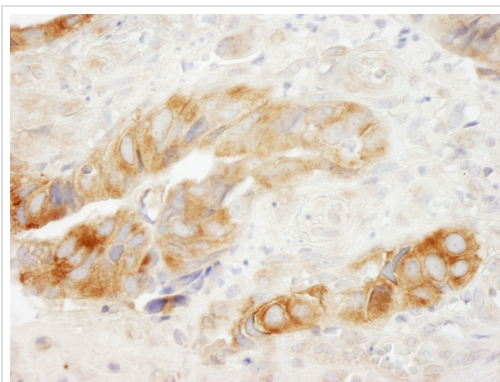
アプリケーション	Abreviews	特記事項
ICC/IF		Use a concentration of 1 µg/ml.
IHC-P		Use a concentration of 1 µg/ml. Perform heat mediated antigen retrieval with citrate buffer pH 6 before commencing with IHC staining protocol.

アプリケーション	Abreviews	特記事項
WB	★★★★★	1/2000 - 1/10000. Detects a band of approximately 50 kDa (predicted molecular weight: 50 kDa).
IP		Use at 2-5 µg/mg of lysate.

## ターゲット情報

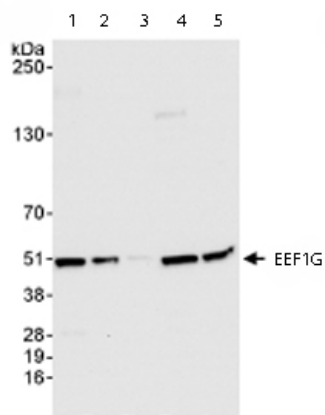
機能	Probably plays a role in anchoring the complex to other cellular components.
組織特異性	Highly expressed in pancreatic tumor tissue and to a lesser extent in normal kidney, intestine, pancreas, stomach, lung, brain, spleen and liver.
配列類似性	Contains 1 EF-1-gamma C-terminal domain. Contains 1 GST C-terminal domain. Contains 1 GST N-terminal domain.

## 画像



Immunohistochemistry (Formalin/PFA-fixed paraffin-embedded sections) analysis of human colon carcinoma tissue labelling EEF1G with ab72368 at 1/200 (1µg/ml).  
Detection: DAB.

Immunohistochemistry (Formalin/PFA-fixed paraffin-embedded sections) - Anti-EEF1G antibody (ab72368)



Western blot - Anti-EEF1G antibody (ab72368)

**All lanes :** Anti-EEF1G antibody (ab72368) at 0.04  $\mu\text{g/ml}$

**Lane 1 :** Whole cell lysate from HeLa cells at 50  $\mu\text{g}$

**Lane 2 :** Whole cell lysate from HeLa cells at 15  $\mu\text{g}$

**Lane 3 :** Whole cell lysate from HeLa cells at 5  $\mu\text{g}$

**Lane 4 :** Whole cell lysate from 293T cells at 50  $\mu\text{g}$

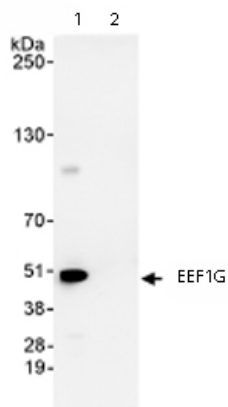
**Lane 5 :** Whole cell lysate from NIH3T3 cells at 50  $\mu\text{g}$

Developed using the ECL technique.

**Predicted band size:** 50 kDa

**Observed band size:** 50 kDa

**Exposure time:** 30 seconds



Immunoprecipitation - Anti-EEF1G antibody (ab72368)

Immunoprecipitation/ Western Blot of EEF1G.

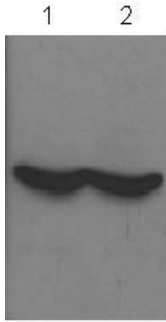
Lane 1: ab72368 at 3 $\mu\text{g/mg}$  whole cell lysate.

Lane 2: Control IgG.

ab72368 at 1 $\mu\text{g/ml}$  for WB.

Whole cell lysate from HeLa cells at 1mg for IP, 20% of IP loaded.

Chemiluminescence with an exposure time of 30 seconds.



Western blot - Anti-EEF1G antibody (ab72368)

This image is courtesy of an anonymous Abreview

**All lanes :** Anti-EEF1G antibody (ab72368) at 1/3000 dilution (in PBS-T for 16 hours at 4°C)

**Lane 1 :** Monkey kidney whole cell lysate overexpressing EEF1G

**Lane 2 :** COS7 whole cell lysate

Lysates/proteins at 20 µg per lane.

### Secondary

**All lanes :** An HRP-conjugated Goat anti-rabbit IgG polyclonal at 1/3000 dilution

Developed using the ECL technique.

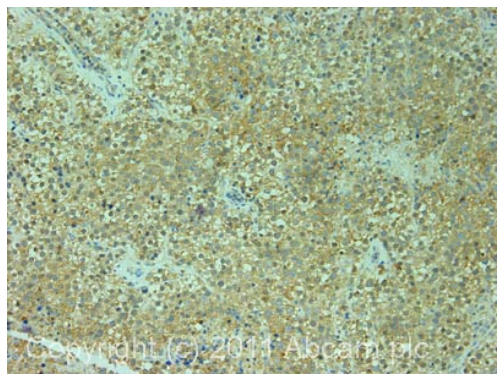
Performed under reducing conditions.

**Predicted band size:** 50 kDa

**Observed band size:** 50 kDa

**Exposure time:** 10 seconds

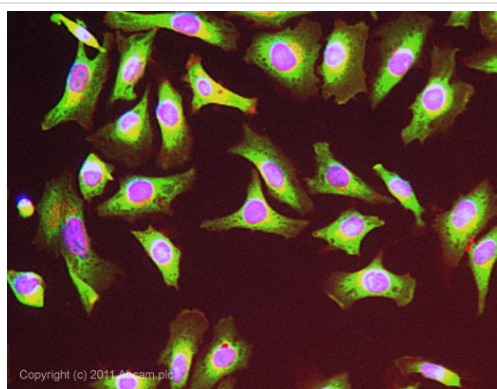
**Blocking Step:** 5% Milk for 1 hour at 22°C



Immunohistochemistry (Formalin/PFA-fixed paraffin-embedded sections) - Anti-EEF1G antibody (ab72368)

IHC image of ab72368 staining in human normal testis formalin fixed paraffin embedded tissue section, performed on a Leica Bond™ system using the standard protocol F. The section was pre-treated using heat mediated antigen retrieval with sodium citrate buffer (pH6, epitope retrieval solution 1) for 20 mins. The section was then incubated with ab72368, 1µg/ml, for 15 mins at room temperature and detected using an HRP conjugated compact polymer system. DAB was used as the chromogen. The section was then counterstained with haematoxylin and mounted with DPX.

For other IHC staining systems (automated and non-automated) customers should optimize variable parameters such as antigen retrieval conditions, primary antibody concentration and antibody incubation times.



Immunocytochemistry/ Immunofluorescence - Anti-EEF1G antibody (ab72368)

ICC/IF image of ab72368 stained HeLa cells. The cells were 4% formaldehyde fixed (10 min) and then incubated in 1%BSA / 10% normal goat serum / 0.3M glycine in 0.1% PBS-Tween for 1h to permeabilise the cells and block non-specific protein-protein interactions. The cells were then incubated with the antibody (ab72368, 1µg/ml) overnight at +4°C. The secondary antibody (green) was [ab96899](#), DyLight® 488 goat anti-rabbit IgG (H+L) used at a 1/250 dilution for 1h. Alexa Fluor® 594 WGA was used to label plasma membranes (red) at a 1/200 dilution for 1h. DAPI was used to stain the cell nuclei (blue) at a concentration of 1.43µM.

**Please note:** All products are "FOR RESEARCH USE ONLY AND ARE NOT INTENDED FOR DIAGNOSTIC OR THERAPEUTIC USE"

**Our Abpromise to you: Quality guaranteed and expert technical support**

- Replacement or refund for products not performing as stated on the datasheet
- Valid for 12 months from date of delivery
- Response to your inquiry within 24 hours
  
- We provide support in Chinese, English, French, German, Japanese and Spanish
- Extensive multi-media technical resources to help you
- We investigate all quality concerns to ensure our products perform to the highest standards

If the product does not perform as described on this datasheet, we will offer a refund or replacement. For full details of the Abpromise, please visit <http://www.abcam.co.jp/abpromise> or contact our technical team.

### **Terms and conditions**

---

- Guarantee only valid for products bought direct from Abcam or one of our authorized distributors