

Product datasheet

Anti-DO-11.10 T Cell Receptor antibody [KJ1-26 (KJ126, KJI-26, KJI26)] (FITC) ab93558

画像数 1

製品の概要

製品名	Anti-DO-11.10 T Cell Receptor antibody [KJ1-26 (KJ126, KJI-26, KJI26)] (FITC)
製品の詳細	Mouse monoclonal [KJ1-26 (KJ126, KJI-26, KJI26)] to DO-11.10 T Cell Receptor (FITC)
標識	FITC. Ex: 493nm, Em: 528nm
特異性	This anti-idiotypic monoclonal antibody binds the T-cell receptor (TCR) expressed on DO11.10 and DO11.10.24 murine T cell hybridomas, but not on any other T cell hybridomas tested.
アプリケーション	適用あり: Flow Cyt
種交差性	交差種: Mouse
免疫原	DO-11.10 mouse T cell hybridoma.
ポジティブ・コントロール	DO11.10 T cell hybridoma.

製品の特性

製品の状態	Liquid
保存方法	Shipped at 4°C. Store at +4°C.
バッファー	Preservative: 0.09% Sodium Azide Constituents: PBS, 150mM Sodium chloride, pH 7.2
精製度	IgG fraction
ポリ/モノ	モノクローナル
クローン名	KJ1-26 (KJ126, KJI-26, KJI26)
アイソタイプ	IgG2a

アプリケーション

Our [Abpromise guarantee](#) covers the use of **ab93558** in the following tested applications.

The application notes include recommended starting dilutions; optimal dilutions/concentrations should be determined by the end user.

アプリケーション	Abreviews	特記事項
Flow Cyt		

追加情報

Flow Cyt: Use 0.06 - 0.125µl for 10^{5-8} cells in a final volume of 100µl.

Not yet tested in other applications.

Optimal dilutions/concentrations should be determined by the end user.

ターゲット情報

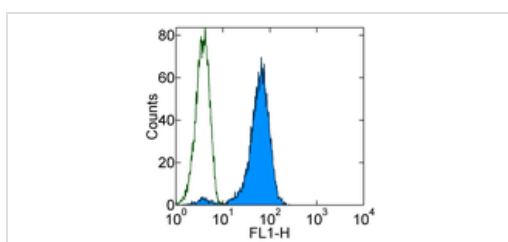
関連性

The TCR expressed on DO11.10 recognizes an ovalbumin peptide in the context of I-Ad major histocompatibility molecules.

細胞内局在

Plasma membrane

画像



Flow Cytometry - DO-11.10 T Cell Receptor antibody
[KJ1-26 (KJ126, KJ1-26, KJ126)] (FITC) (ab93558)

Staining of T Cell Receptor on DO11.10 T cell hybridoma cells with 0.06 µg of FITC Mouse IgG2a, K Isotype Control (open histogram) or ab93558 (colored histogram).

Total viable cells were used for analysis.

Please note: All products are "FOR RESEARCH USE ONLY AND ARE NOT INTENDED FOR DIAGNOSTIC OR THERAPEUTIC USE"

Our Abpromise to you: Quality guaranteed and expert technical support

- Replacement or refund for products not performing as stated on the datasheet
- Valid for 12 months from date of delivery
- Response to your inquiry within 24 hours
- We provide support in Chinese, English, French, German, Japanese and Spanish
- Extensive multi-media technical resources to help you
- We investigate all quality concerns to ensure our products perform to the highest standards

If the product does not perform as described on this datasheet, we will offer a refund or replacement. For full details of the Abpromise, please visit <http://www.abcam.co.jp/abpromise> or contact our technical team.

Terms and conditions

- Guarantee only valid for products bought direct from Abcam or one of our authorized distributors