


Product datasheet

Anti-DKFZP434B168 antibody ab87276

画像数 1

製品の概要

製品名	Anti-DKFZP434B168 antibody
製品の詳細	Rabbit polyclonal to DKFZP434B168
アプリケーション	適用あり: IHC-P
種交差性	交差種: Human 交差が予測される動物種: Horse, Chicken, Cow, Dog, Turkey, Pig, Chimpanzee, Ferret, Rhesus monkey, Gorilla, Orangutan 
免疫原	Synthetic peptide corresponding to a region within the C terminal amino acids 850-900 of human DKFZP434B168 (TrEMBL entry Q9NVH2; GeneID 25896).
ポジティブ・コントロール	Human breast carcinoma, human testicular seminoma

製品の特性

製品の状態	Liquid
保存方法	Shipped at 4°C. Upon delivery aliquot and store at -20°C. Avoid freeze / thaw cycles.
バッファー	Preservative: 0.09% Sodium Azide Constituents: 0.1% BSA, Tris buffered saline
精製度	Immunogen affinity purified
特記事項 (精製)	Affinity purified using an epitope to DKFZP434B168 immobilised on solid support.
ポリ/モノ	ポリクローナル
アイソタイプ	IgG

アプリケーション

Our [Abpromise guarantee](#) covers the use of **ab87276** in the following tested applications.

The application notes include recommended starting dilutions; optimal dilutions/concentrations should be determined by the end user.

アプリケーション	Abreviews	特記事項
----------	-----------	------

IHC-P

追加情報

IHC-P: 1/100 - 1/500. Epitope exposure is recommended.

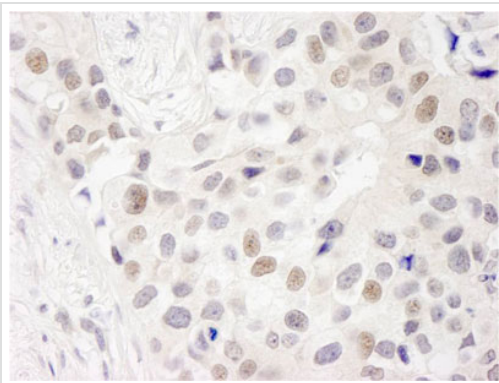
Epitope exposure with tris EDTA pH 9.0 buffer will enhance staining.
Likely to work with frozen sections

Not yet tested in other applications.
Optimal dilutions/concentrations should be determined by the end user.

ターゲット情報

機能	Component of the Integrator complex, a complex involved in the small nuclear RNAs (snRNA) U1 and U2 transcription and in their 3'-box-dependent processing. The Integrator complex is associated with the C-terminal domain (CTD) of RNA polymerase II largest subunit (POLR2A) and is recruited to the U1 and U2 snRNAs genes. Plays a role in DNA damage response (DDR) signaling during the S phase.
配列類似性	Belongs to the Integrator subunit 7 family.
細胞内局在	Nucleus. Chromosome. Localizes to sites of DNA damage in a H2AX-independent manner.

画像



ab87276, at a 1/250 dilution, staining DKFZP434B168 in formalin fixed, paraffin embedded human breast carcinoma tissue by Immunohistochemistry. Detection: DAB staining

Immunohistochemistry (Formalin/PFA-fixed paraffin-embedded sections) - DKFZP434B168 antibody (ab87276)

Please note: All products are "FOR RESEARCH USE ONLY AND ARE NOT INTENDED FOR DIAGNOSTIC OR THERAPEUTIC USE"

Our Abpromise to you: Quality guaranteed and expert technical support

- Replacement or refund for products not performing as stated on the datasheet
- Valid for 12 months from date of delivery
- Response to your inquiry within 24 hours
- We provide support in Chinese, English, French, German, Japanese and Spanish
- Extensive multi-media technical resources to help you
- We investigate all quality concerns to ensure our products perform to the highest standards

If the product does not perform as described on this datasheet, we will offer a refund or replacement. For full details of the Abpromise,

please visit <http://www.abcam.co.jp/abpromise> or contact our technical team.

Terms and conditions

- Guarantee only valid for products bought direct from Abcam or one of our authorized distributors