

Product datasheet

Anti-DECR1 antibody [8B1AD10] ab110287

画像数 4

製品の概要

製品名	Anti-DECR1 antibody [8B1AD10]
製品の詳細	Mouse monoclonal [8B1AD10] to DECR1
由来種	Mouse
アプリケーション	適用あり: IP, ICC/IF, IHC-P, In-Cell ELISA, Flow Cyt
種交差性	交差種: Human
免疫原	Human liver mitochondria.
ポジティブ・コントロール	MRC5 fibroblasts; Human cerebellum tissue; Human liver mitochondria; HeLa cells.
特記事項	This antibody clone is manufactured by Abcam. Product was previously marketed under the MitoSciences sub-brand. If you require this antibody in a particular buffer formulation or a particular conjugate for your experiments, please contact orders@abcam.com or you can find further information here .

製品の特性

製品の状態	Liquid
保存方法	Shipped at 4°C. Store at +4°C. Do Not Freeze.
バッファー	Preservative: 0.02% Sodium azide Constituent: HBS
精製度	Ammonium Sulphate Precipitation
特記事項(精製)	Purity near homogeneity as judge by SDS-PAGE. The antibody was produced in-vitro using hybridomas grown in serum-free medium and then purified by biochemical fractionation.
ポリ/モノ	モノクローナル
クローン名	8B1AD10
アイソタイプ	IgG1
軽鎖の種類	kappa

アプリケーション

Our [Abpromise guarantee](#) covers the use of **ab110287** in the following tested applications.

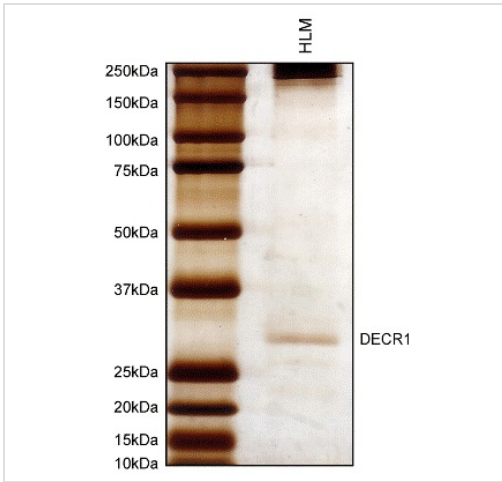
The application notes include recommended starting dilutions; optimal dilutions/concentrations should be determined by the end user.

アプリケーション	Abreviews	特記事項
IP		Use at an assay dependent concentration. This antibody will only immunoprecipitate DECR1 from isolated mitochondria.
ICC/IF		Use a concentration of 1 µg/ml.
IHC-P		Use at an assay dependent concentration. Perform heat mediated antigen retrieval - 1 min pressure cook in 1mmol EDTA pH8.
In-Cell ELISA		Use a concentration of 4 µg/ml. (0.4 µg/well)
Flow Cyt		Use a concentration of 1 µg/ml. ab170190 - Mouse monoclonal IgG1, is suitable for use as an isotype control with this antibody.

ターゲット情報

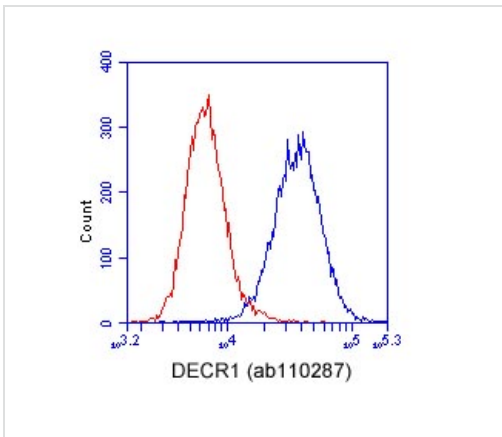
機能	Auxiliary enzyme of beta-oxidation. It participates in the metabolism of unsaturated fatty enoyl-CoA esters having double bonds in both even- and odd-numbered positions. Catalyzes the NADP-dependent reduction of 2,4-dienoyl-CoA to yield trans-3-enoyl-CoA.
組織特異性	Heart = liver = pancreas > kidney >> skeletal muscle = lung.
配列類似性	Belongs to the short-chain dehydrogenases/reductases (SDR) family. 2,4-dienoyl-CoA reductase subfamily.
細胞内局在	Mitochondrion.

画像



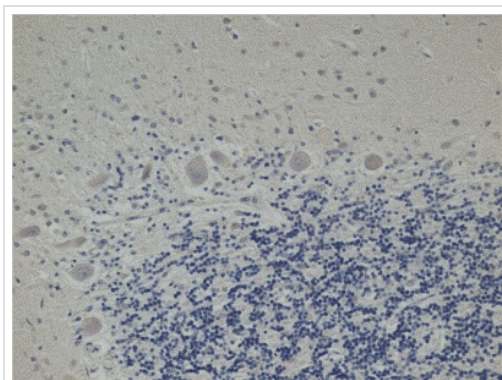
DEC1 immunocaptured from human liver mitochondria using ab110287.

Immunoprecipitation - Anti-DEC1 antibody [8B1AD10] (ab110287)



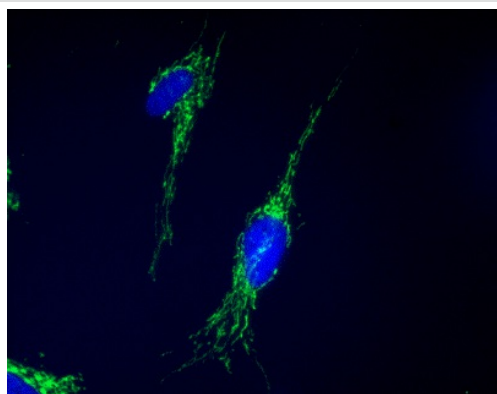
HeLa cells were stained with 1 µg/mL ab110287 (blue) or an equal amount of an isotype control antibody (red) and analyzed by flow cytometry.

Flow Cytometry - Anti-DEC1 antibody [8B1AD10] (ab110287)



ab110287 staining DEC1 in formalin-fixed, paraffin-embedded Human cerebellum tissue by Immunohistochemistry. DEC1 immunoactivity is most intense in neuronal cell bodies, most notably in the large Purkinje cells.

Immunohistochemistry (Formalin/PFA-fixed paraffin-embedded sections) - Anti-DEC1 antibody [8B1AD10] (ab110287)



MRC5 fibroblasts labeled with 1 $\mu\text{g}/\text{ml}$ ab110287 and detected with goat anti-mouse secondary conjugated to FITC.

Immunocytochemistry/ Immunofluorescence - Anti-DEC1 antibody [8B1AD10] (ab110287)

Please note: All products are "FOR RESEARCH USE ONLY AND ARE NOT INTENDED FOR DIAGNOSTIC OR THERAPEUTIC USE"

Our Abpromise to you: Quality guaranteed and expert technical support

- Replacement or refund for products not performing as stated on the datasheet
- Valid for 12 months from date of delivery
- Response to your inquiry within 24 hours
- We provide support in Chinese, English, French, German, Japanese and Spanish
- Extensive multi-media technical resources to help you
- We investigate all quality concerns to ensure our products perform to the highest standards

If the product does not perform as described on this datasheet, we will offer a refund or replacement. For full details of the Abpromise, please visit <http://www.abcam.co.jp/abpromise> or contact our technical team.

Terms and conditions

- Guarantee only valid for products bought direct from Abcam or one of our authorized distributors