


Product datasheet

Anti-DDAH1 antibody ab82908

2 References [画像数 6](#)

製品の概要

製品名	Anti-DDAH1 antibody
製品の詳細	Rabbit polyclonal to DDAH1
アプリケーション	適用あり: IHC-P, WB, ICC/IF
種交差性	交差種: Human, Zebrafish 交差が予測される動物種: Mouse, Rat, Rabbit, Horse, Chicken, Guinea pig, Cow, Cat, Dog 
免疫原	Synthetic peptide corresponding to a region within the internal sequence amino acids 107-156 (ALEKLQLNIV EMKDENATLD GGDVLFITGRE FFVGLSKRTN QRGAEILADT) of Human DDAH1 (NP_036269). Run BLAST with ExPASy Run BLAST with NCBI
ポジティブ・コントロール	Fetal liver lysate.

製品の特性

製品の状態	Liquid
保存方法	Shipped at 4°C. Upon delivery aliquot and store at -20°C. Avoid freeze / thaw cycles.
バッファー	Preservative: None Constituents: 2% Sucrose, PBS
精製度	Immunogen affinity purified
ポリ/モノ	ポリクローナル
アイソタイプ	IgG

アプリケーション

Our [Abpromise guarantee](#) covers the use of **ab82908** in the following tested applications.

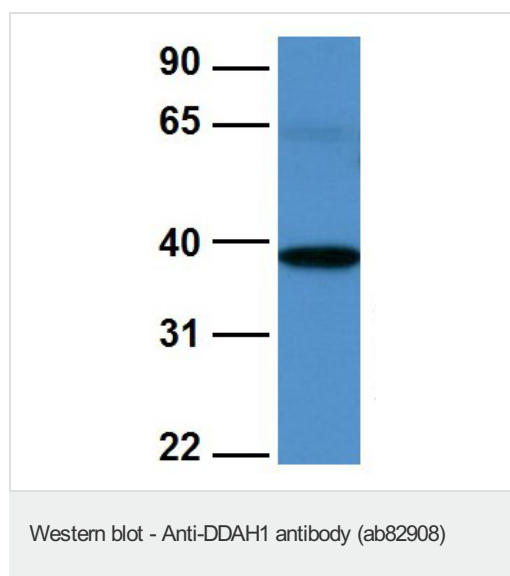
The application notes include recommended starting dilutions; optimal dilutions/concentrations should be determined by the end user.

アプリ ケーション	Abreviews	特記事項
IHC-P		Use a concentration of 2.5 µg/ml.
WB		Use a concentration of 1 µg/ml. Detects a band of approximately 37 kDa (predicted molecular weight: 31 kDa). Good results were obtained when blocked with 5% non-fat dry milk in 0.05% PBS-T.
ICC/IF		Use a concentration of 5 µg/ml.

ターゲット情報

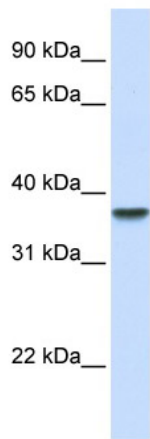
機能	Hydrolyzes N(G),N(G)-dimethyl-L-arginine (ADMA) and N(G)-monomethyl-L-arginine (MMA) which act as inhibitors of NOS. Has therefore a role in the regulation of nitric oxide generation.
組織特異性	Detected in brain, liver, kidney and pancreas, and at low levels in skeletal muscle.
配列類似性	Belongs to the DDAH family.

画像



Predicted band size : 31 kDa

Western blot analysis of Human fetal brain tissue lysate labeling DDAH1 with ab82908 at 1.0µg/ml



Western blot - DDAH1 antibody (ab82908)

Anti-DDAH1 antibody (ab82908) at 1 µg/ml
(5% skim milk / PBS buffer) + fetal liver lysate
at 10 µg

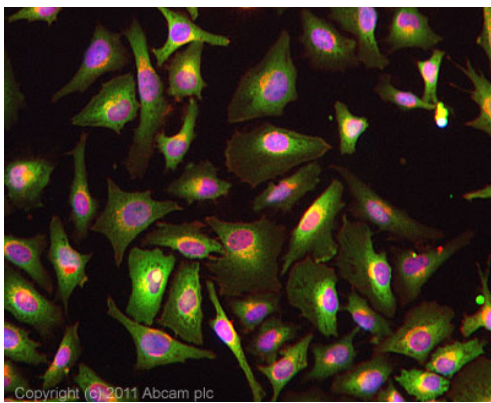
Secondary

HRP conjugated anti-Rabbit IgG at 1/50000
dilution

Predicted band size : 31 kDa

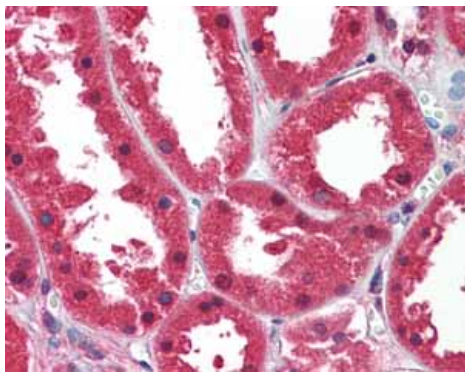
Observed band size : 37 kDa

Gel concentration 12%



Immunocytochemistry/ Immunofluorescence-DDAH1
antibody(ab82908)

ICC/IF image of ab82908 stained HeLa cells.
The cells were 4% formaldehyde fixed (10
min) and then incubated in 1%BSA / 10%
normal goat serum / 0.3M glycine in 0.1%
PBS-Tween for 1h to permeabilise the cells
and block non-specific protein-protein
interactions. The cells were then incubated
with the antibody (ab82908, 5µg/ml) overnight
at +4°C. The secondary antibody (green) was
[ab96899](#), DyLight® 488 goat anti-rabbit IgG
(H+L) used at a 1/250 dilution for 1h. Alexa
Fluor® 594 WGA was used to label plasma
membranes (red) at a 1/200 dilution for 1h.
DAPI was used to stain the cell nuclei (blue) at
a concentration of 1.43µM.



Immunohistochemistry (Formalin/PFA-fixed paraffin-
embedded sections)-Anti-DDAH1 antibody(ab82908)

Immunohistochemistry (Formalin/PFA-fixed
paraffin-embedded sections) analysis of
human kidney tissue labelling DDAH1 with
ab82908 at 2.5 µg/ml.

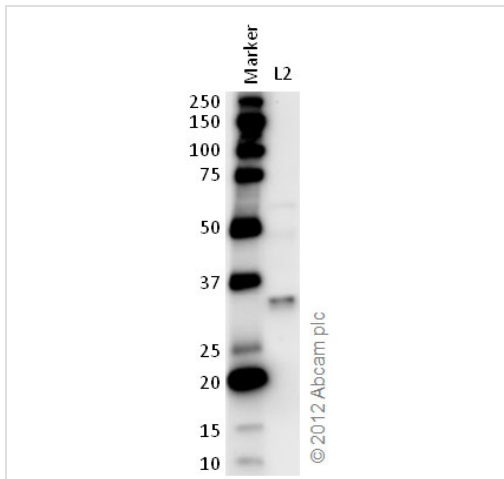


Western blot

Developed using the ECL technique

Performed under reducing conditions.

Predicted band size : 31 kDa



Western blot - Anti-DDAH1 antibody (ab82908)

All lanes : Anti-DDAH1 antibody (ab82908)
at 1 µg/ml

Lane 1 : Marker

Lane 2 : Zebrafish brain homogenate at 20 µg/ml

Secondary

Goat polyclonal to Rabbit IgG – H&L – Pre-Adsorbed (HRP) at 1/6000 dilution
Developed using the ECL technique

Performed under reducing conditions.

Predicted band size : 31 kDa

Observed band size : 31 kDa

Exposure time : 5 minutes

Please note: All products are "FOR RESEARCH USE ONLY AND ARE NOT INTENDED FOR DIAGNOSTIC OR THERAPEUTIC USE"

Our Abpromise to you: Quality guaranteed and expert technical support

- Replacement or refund for products not performing as stated on the datasheet
- Valid for 12 months from date of delivery
- Response to your inquiry within 24 hours
- We provide support in Chinese, English, French, German, Japanese and Spanish
- Extensive multi-media technical resources to help you

- We investigate all quality concerns to ensure our products perform to the highest standards

If the product does not perform as described on this datasheet, we will offer a refund or replacement. For full details of the Abpromise, please visit <http://www.abcam.co.jp/abpromise> or contact our technical team.

Terms and conditions

- Guarantee only valid for products bought direct from Abcam or one of our authorized distributors