

Product datasheet

Anti-DCAMKL1 antibody ab106635

画像数 3

製品の概要

製品名	Anti-DCAMKL1 antibody
製品の詳細	Rabbit polyclonal to DCAMKL1
アプリケーション	<b>適用あり:</b> ICC/IF, IHC-P, WB
種交差性	<b>交差種:</b> Mouse, Rat, Human
免疫原	Synthetic peptide corresponding to Human DCAMKL1 (N terminal).
ポジティブ・コントロール	Human brain tissue lysate; Rat brain tissue.

製品の特性

製品の状態	Liquid
保存方法	Shipped at 4°C. Store at 4°C (stable for up to 12 months).
バッファー	Preservative: 0.02% Sodium Azide Constituents: PBS
精製度	Protein A purified
特記事項(精製)	ab106635 is purified by affinity chromatography via a peptide column.
ポリ/モノ	ポリクローナル
アイソタイプ	IgG

アプリケーション

Our [Abpromise guarantee](#) covers the use of **ab106635** in the following tested applications.

The application notes include recommended starting dilutions; optimal dilutions/concentrations should be determined by the end user.

アプリケーション	Abreviews	特記事項
ICC/IF		Use a concentration of 20 µg/ml.
IHC-P		Use a concentration of 2.5 µg/ml.
WB		Use a concentration of 0.5 - 1 µg/ml. Predicted molecular weight: 82 kDa.

ターゲット情報

## 機能

Probable kinase that may be involved in a calcium-signaling pathway controlling neuronal migration in the developing brain. May also participate in functions of the mature nervous system.

## 組織特異性

In fetal tissues, highly expressed in brain, detectable in lung and liver, but not in kidney. In adult tissues, expressed ubiquitously in the brain, detectable in the heart, liver, spleen, thymus, prostate, testis, ovary, small intestine and colon. The type A isoforms seem to be expressed predominantly in fetal brain whereas type B isoforms are expressed abundantly in both fetal and adult brain.

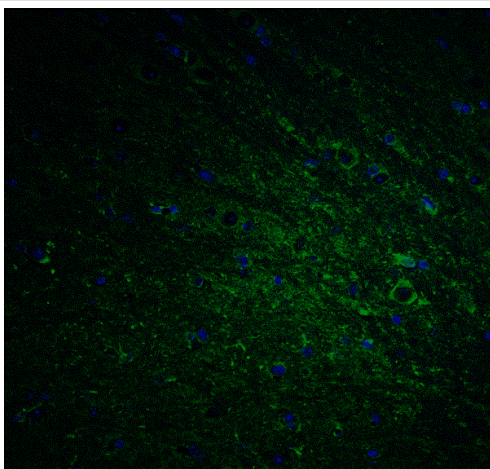
## 配列類似性

Belongs to the protein kinase superfamily. CAMK Ser/Thr protein kinase family. CaMK subfamily.

Contains 2 doublecortin domains.

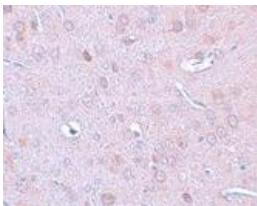
Contains 1 protein kinase domain.

## Anti-DCAMKL1 antibody 画像



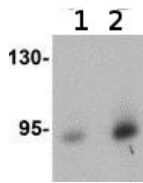
Immunohistochemistry (Formalin-fixed paraffin embedded sections) of mouse brain tissue labeling DCAMKL1 with Anti-DCAMKL1 antibody (ab106635) at 20µg/ml.

Immunohistochemistry (Formalin/PFA-fixed paraffin-embedded sections) - Anti-DCAMKL1 antibody (ab106635)



ab106635 at 2.5µg/ml, staining DCAMKL1 in Rat brain, using Immunohistochemistry, Formalin-fixed, Paraffin-embedded tissue.

Immunohistochemistry (Formalin/PFA-fixed paraffin-embedded sections) - Anti-DCAMKL1 antibody (ab106635)



Western blot - Anti-DCAMKL1 antibody (ab106635)

**Lane 1** : Anti-DCAMKL1 antibody  
(ab106635) at 0.5 µg/ml

**Lane 2** : Anti-DCAMKL1 antibody  
(ab106635) at 1 µg/ml

**Lane 1** : Human brain tissue lysate

**Lane 2** : Human brain tissue lysate

Lysates/proteins at 15 µg per lane.

**Predicted band size** : 82 kDa

**Please note:** All products are "FOR RESEARCH USE ONLY AND ARE NOT INTENDED FOR DIAGNOSTIC OR THERAPEUTIC USE"

### Our Abpromise to you: Quality guaranteed and expert technical support

- Replacement or refund for products not performing as stated on the datasheet
- Valid for 12 months from date of delivery
- Response to your inquiry within 24 hours
- We provide support in Chinese, English, French, German, Japanese and Spanish
- Extensive multi-media technical resources to help you
- We investigate all quality concerns to ensure our products perform to the highest standards

If the product does not perform as described on this datasheet, we will offer a refund or replacement. For full details of the Abpromise, please visit <http://www.abcam.co.jp/abpromise> or contact our technical team.

### Terms and conditions

- Guarantee only valid for products bought direct from Abcam or one of our authorized distributors