


Product datasheet

Anti-DC-SIGN antibody ab87375

画像数 2

製品の概要

製品名	Anti-DC-SIGN antibody
製品の詳細	Rabbit polyclonal to DC-SIGN
アプリケーション	適用あり: WB, IHC-P
種交差性	交差種: Human 交差が予測される動物種: Gorilla, Orangutan 
免疫原	Synthetic peptide conjugated to KLH derived from within residues 300 - 400 of Human DC-SIGN. Immunogen の所有権に関して (Peptide available as <a href="#">ab95424</a> .)
ポジティブ・コントロール	This antibody gave a positive signal in the following whole cell lysates: Jurkat; THP1; U937.

製品の特性

製品の状態	Liquid
保存方法	Shipped at 4°C. Store at +4°C short term (1-2 weeks). Upon delivery aliquot. Store at -20°C or -80°C. Avoid freeze / thaw cycle.
バッファー	Preservative: 0.02% Sodium Azide Constituents: 1% BSA, PBS, pH 7.4
精製度	Immunogen affinity purified
ポリ/モノ	ポリクローナル
アイソタイプ	IgG

アプリケーション

Our [Abpromise guarantee](#) covers the use of **ab87375** in the following tested applications.

The application notes include recommended starting dilutions; optimal dilutions/concentrations should be determined by the end user.

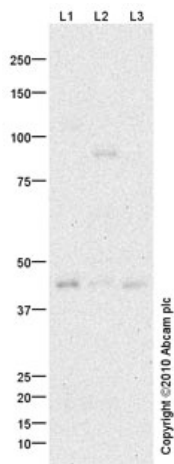
アプリケーション	Abreviews	特記事項
WB		Use a concentration of 1 µg/ml. Detects a band of approximately 45 kDa (predicted molecular weight: 45 kDa).

アプリケーション	Abreviews	特記事項
IHC-P		Use a concentration of 5 µg/ml.

## ターゲット情報

<b>機能</b>	Pathogen-recognition receptor expressed on the surface of immature dendritic cells (DCs) and involved in initiation of primary immune response. Thought to mediate the endocytosis of pathogens which are subsequently degraded in lysosomal compartments. The receptor returns to the cell membrane surface and the pathogen-derived antigens are presented to resting T-cells via MHC class II proteins to initiate the adaptive immune response. Probably recognizes in a calcium-dependent manner high mannose N-linked oligosaccharides in a variety of pathogen antigens, including HIV-1 gp120, HIV-2 gp120, SIV gp120, ebolavirus glycoproteins, cytomegalovirus gB, HCV E2, dengue virus gE, Leishmania pifanoi LPG, Lewis-x antigen in Helicobacter pylori LPS, mannose in Klebsiella pneumoniae LPS, di-mannose and tri-mannose in Mycobacterium tuberculosis ManLAM and Lewis-x antigen in Schistosoma mansoni SEA. On DCs it is a high affinity receptor for ICAM2 and ICAM3 by binding to mannose-like carbohydrates. May act as a DC rolling receptor that mediates transendothelial migration of DC presursors from blood to tissues by binding endothelial ICAM2. Seems to regulate DC-induced T-cell proliferation by binding to ICAM3 on T-cells in the immunological synapse formed between DC and T-cells.
<b>組織特異性</b>	Predominantly expressed in dendritic cells and in DC-residing tissues. Also found in placental macrophages, endothelial cells of placental vascular channels, peripheral blood mononuclear cells, and THP-1 monocytes.
<b>配列類似性</b>	Contains 1 C-type lectin domain.
<b>ドメイン</b>	The tandem repeat domain, also called neck domain, mediates oligomerization.
<b>細胞内局在</b>	Secreted and Cell membrane.

## 画像



Western blot - DC-SIGN antibody (ab87375)

**All lanes** : Anti-DC-SIGN antibody (ab87375)  
at 1  $\mu\text{g/ml}$

**Lane 1** : Jurkat (Human T cell lymphoblast-like cell line) Whole Cell Lysate

**Lane 2** : THP1 (Human acute monocytic leukemia cell line) Whole Cell Lysate

**Lane 3** : U937 (Human leukemic monocyte lymphoma cell line) Whole Cell Lysate

Lysates/proteins at 10  $\mu\text{g}$  per lane.

### Secondary

Goat polyclonal to Rabbit IgG - H&L - Pre-Adsorbed (HRP) at 1/3000 dilution  
Developed using the ECL technique

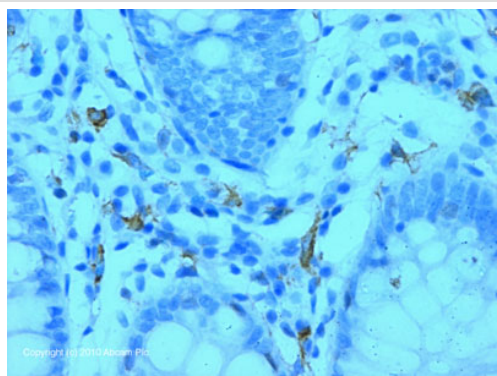
Performed under reducing conditions.

**Predicted band size** : 45 kDa

**Observed band size** : 45 kDa

**Additional bands at** : 85 kDa. We are unsure as to the identity of these extra bands.

**Exposure time** : 20 minutes



Immunohistochemistry (Formalin/PFA-fixed paraffin-embedded sections) - DC-SIGN antibody (ab87375)

IHC image of Ab87375 staining in Human Colon formalin fixed paraffin embedded tissue section, performed on a Leica Bond™ system using the standard protocol F. The section was pre-treated using heat mediated antigen retrieval with sodium citrate buffer (pH6, epitope retrieval solution 1) for 20 mins. The section was then incubated with Ab87375, 5µg/ml, for 15 mins at room temperature and detected using an HRP conjugated compact polymer system. DAB was used as the chromogen. The section was then counterstained with haematoxylin and mounted with DPX.

For other IHC staining systems (automated and non-automated) customers should optimize variable parameters such as antigen retrieval conditions, primary antibody concentration and antibody incubation times.

**Please note:** All products are "FOR RESEARCH USE ONLY AND ARE NOT INTENDED FOR DIAGNOSTIC OR THERAPEUTIC USE"

### Our Abpromise to you: Quality guaranteed and expert technical support

- Replacement or refund for products not performing as stated on the datasheet
- Valid for 12 months from date of delivery
- Response to your inquiry within 24 hours
- We provide support in Chinese, English, French, German, Japanese and Spanish
- Extensive multi-media technical resources to help you
- We investigate all quality concerns to ensure our products perform to the highest standards

If the product does not perform as described on this datasheet, we will offer a refund or replacement. For full details of the Abpromise, please visit <http://www.abcam.co.jp/abpromise> or contact our technical team.

### Terms and conditions

- Guarantee only valid for products bought direct from Abcam or one of our authorized distributors