

Product datasheet

Anti-Cytokeratin 20 antibody [EPR1622Y] ab76126

リコンビナント RabMAb®

★★★★★ 15 Abreviews 17 References 画像数 11

製品の概要

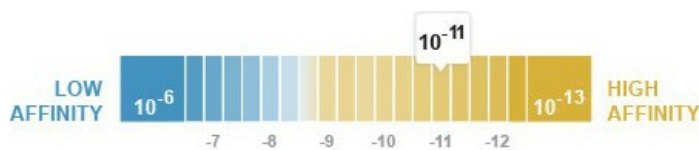
製品名	Anti-Cytokeratin 20 antibody [EPR1622Y]
製品の詳細	Rabbit monoclonal [EPR1622Y] to Cytokeratin 20
由来種	Rabbit
特異性	The immunogen of this antibody is 73% homolog with Mouse-Cytokeratin 20. This antibody gives positive results for mouse samples in Western Blot only. Therefore we do not recommend this antibody for mouse samples and do not cover mouse with our Abpromise guarantee.
アプリケーション	適用あり: IHC-Fr, ICC/IF, WB, IP, IHC-P, Flow Cyt
種交差性	交差種: Rat, Goat, Human, Pig, Common marmoset
免疫原	Synthetic peptide within Human Cytokeratin 20 (C terminal). The exact sequence is proprietary.
ポジティブ・コントロール	Human small intestine lysate; human colon adenocarcinoma tissue.
特記事項	A trial size is available to purchase for this antibody.

Our RabMAb® technology is a patented hybridoma-based technology for making rabbit monoclonal antibodies. For details on our patents, please refer to [RabMAb® patents](#)

This product is a recombinant rabbit monoclonal antibody.

製品の特性

製品の状態	Liquid
保存方法	Shipped at 4°C. Upon delivery aliquot and store at -20°C. Avoid freeze / thaw cycles.
解離定数 (K _D 値)	K _D = 3.10 x 10 ⁻¹¹ M



[Learn more about K_D](#)

バッファー	PBS 49%, Sodium azide 0.01%, Glycerol 50%, BSA 0.05%
精製度	Tissue culture supernatant

ポリモノ	モノクローナル
クローン名	EPR1622Y
アイソタイプ	IgG

アプリケーション

Our [Abpromise guarantee](#) covers the use of **ab76126** in the following tested applications.

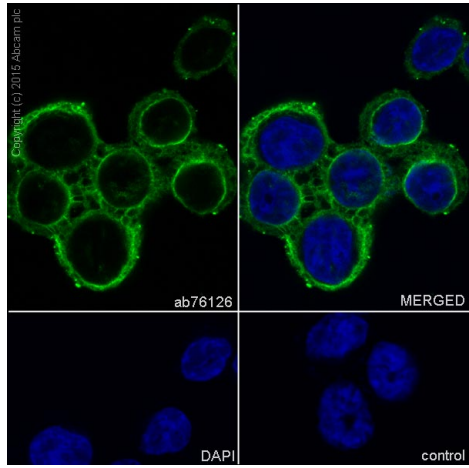
The application notes include recommended starting dilutions; optimal dilutions/concentrations should be determined by the end user.

アプリケーション	Abreviews	特記事項
IHC-Fr	★★★★☆	Use at an assay dependent concentration.
ICC/IF	★★★★☆	1/100 - 1/500.
WB		1/10000 - 1/50000. Predicted molecular weight: 48 kDa.
IP		1/40.
IHC-P	★★★★★	1/100 - 1/250. Perform heat mediated antigen retrieval before commencing with IHC staining protocol.
Flow Cyt		1/1000. ab172730 - Rabbit monoclonal IgG, is suitable for use as an isotype control with this antibody.

ターゲット情報

機能	Plays a significant role in maintaining keratin filament organization in intestinal epithelia. When phosphorylated, plays a role in the secretion of mucin in the small intestine.
組織特異性	Expressed predominantly in the intestinal epithelium. Expressed in luminal cells of colonic mucosa. Also expressed in the Merkel cells of keratinized oral mucosa; specifically at the tips of some rete ridges of the gingival mucosa, in the basal layer of the palatal mucosa and in the taste buds of lingual mucosa.
配列類似性	Belongs to the intermediate filament family.
発生段階	First detected at embryonic week 8 in individual 'converted' simple epithelial cells of the developing intestinal mucosa. In later fetal stages, synthesis extends over most goblet cells and a variable number of villus enterocytes. In the developing gastric and intestinal mucosa, expressed in all enterocytes and goblet cells as well as certain 'low-differentiated' columnar cells, whereas the neuroendocrine and Paneth cells are negative.
翻訳後修飾	Hyperphosphorylation at Ser-13 occurs during the early stages of apoptosis but becomes less prominent during the later stages. Phosphorylation at Ser-13 also increases in response to stress brought on by cell injury. Proteolytically cleaved by caspases during apoptosis. Cleavage occurs at Asp-228.
細胞内局在	Cytoplasm.

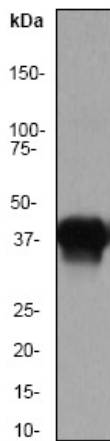
画像



Immunocytochemistry/ Immunofluorescence - Anti-Cytokeratin 20 antibody [EPR1622Y] (ab76126)

Immunocytochemistry/Immunofluorescence analysis of HT-29 (human colorectal adenocarcinoma) cells labelling Cytokeratin 20 with purified ab76126 at 1/500. Cells were fixed with 100% methanol. ab150077, Alexa Fluor® 488-conjugated goat anti-rabbit IgG (1/1000) was used as the secondary antibody. Nuclei were counterstained with DAPI (blue).

Secondary Only Control: PBS was used instead of the primary antibody as the negative control.



Western blot - Anti-Cytokeratin 20 antibody [EPR1622Y] (ab76126)

Anti-Cytokeratin 20 antibody [EPR1622Y] (ab76126) at 1/50000 dilution + human small intestine lysate at 10 µg

Secondary

goat anti-rabbit-HRP at 1/1000 dilution

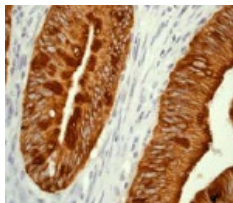
Predicted band size: 48 kDa

Observed band size: 44 kDa

Primary: ab76126, 1/50000 dilution

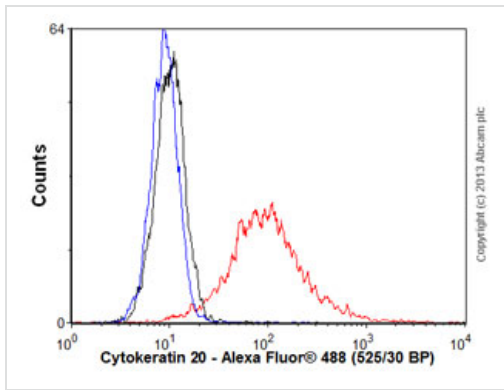
Sample: human small intestine lysate, 10 ug

Secondary: goat anti-rabbit-HRP, 1/1000 dilution



Immunohistochemistry (Formalin/PFA-fixed paraffin-embedded sections) - Anti-Cytokeratin 20 antibody [EPR1622Y] (ab76126)

ab76126 at 1/100 dilution staining Cytokeratin 20 in human colon adenocarcinoma by Immunohistochemistry, Paraffin-embedded tissue.



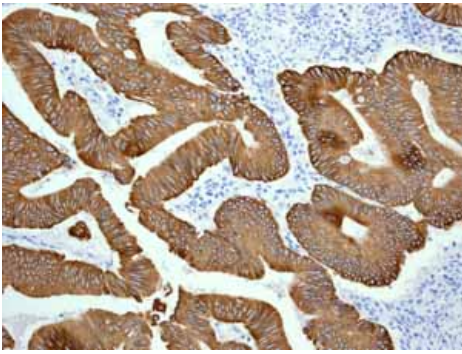
Flow Cytometry - Anti-Cytokeratin 20 antibody
[EPR1622Y] (ab76126)

Overlay histogram showing LoVo cells stained with ab76126 (red line). The cells were fixed with 80% methanol (5 min) and then permeabilized with 0.1% PBS-Triton X-100 for 20 min. The cells were then incubated in 1x PBS / 10% normal goat serum / 0.3M glycine to block non-specific protein-protein interactions followed by the antibody (ab76126, 1/1000 dilution) for 30 min at 22°C. The secondary antibody used was Alexa Fluor® 488 goat anti-rabbit IgG (H&L) (ab150077) at 1/2000 dilution for 30 min at 22°C. Isotype control antibody (black line) was rabbit IgG (monoclonal) (1µg/1x10⁶ cells) used under the same conditions. Unlabelled sample (blue line) was also used as a control. Acquisition of >5,000 events were collected using a 20mW Argon ion laser (488nm) and 525/30 bandpass filter.



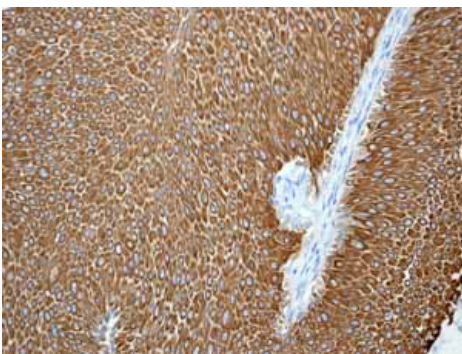
Western blot - Anti-Cytokeratin 20 antibody
[EPR1622Y] (ab76126)

Primary: ab76126, 1/50000 dilution
Sample: ab73640, 0.01 ug
Secondary: ab97080, 1/5000 dilution



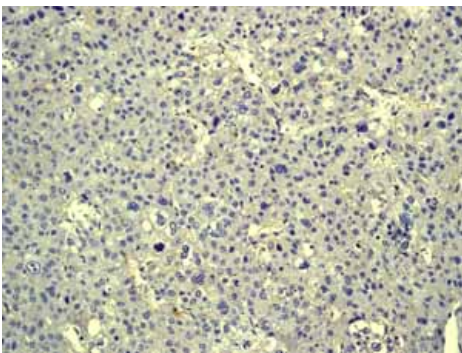
ab76126 showing positive staining in Colonic adenocarcinoma tissue.

Immunohistochemistry (Formalin/PFA-fixed paraffin-embedded sections) - Anti-Cytokeratin 20 antibody [EPR1622Y] (ab76126)



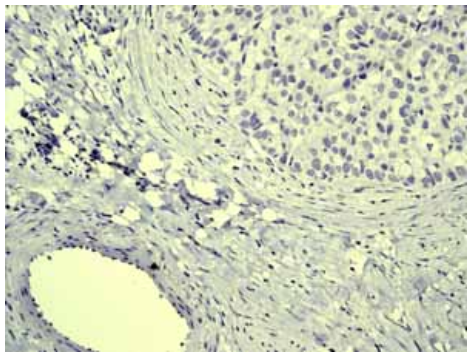
ab76126 showing positive staining in Urinary bladder transitional carcinoma tissue.

Immunohistochemistry (Formalin/PFA-fixed paraffin-embedded sections) - Anti-Cytokeratin 20 antibody [EPR1622Y] (ab76126)



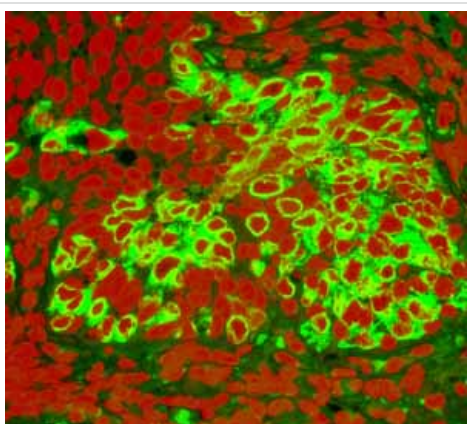
ab76126 showing negative staining in Hepatocellular carcinoma tissue.

Immunohistochemistry (Formalin/PFA-fixed paraffin-embedded sections) - Anti-Cytokeratin 20 antibody [EPR1622Y] (ab76126)



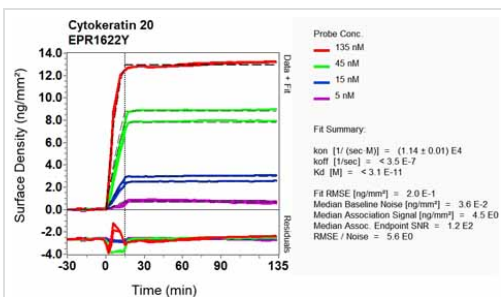
ab76126 showing negative staining in Breast carcinoma tissue.

Immunohistochemistry (Formalin/PFA-fixed paraffin-embedded sections) - Anti-Cytokeratin 20 antibody [EPR1622Y] (ab76126)



Fluorescent immunohistochemical analysis of paraffin-embedded human colonic adenocarcinoma tissue using ab76126. Green-CK20 red-PI

Immunohistochemistry (Formalin/PFA-fixed paraffin-embedded sections) - Anti-Cytokeratin 20 antibody [EPR1622Y] (ab76126)



Equilibrium disassociation constant (K_D)

Learn more about K_D

[Click here to learn more about \$K_D\$](#)

Other - Anti-Cytokeratin 20 antibody [EPR1622Y] (ab76126)

Please note: All products are "FOR RESEARCH USE ONLY AND ARE NOT INTENDED FOR DIAGNOSTIC OR THERAPEUTIC USE"

Our Abpromise to you: Quality guaranteed and expert technical support

- Replacement or refund for products not performing as stated on the datasheet
- Valid for 12 months from date of delivery
- Response to your inquiry within 24 hours

- We provide support in Chinese, English, French, German, Japanese and Spanish
- Extensive multi-media technical resources to help you
- We investigate all quality concerns to ensure our products perform to the highest standards

If the product does not perform as described on this datasheet, we will offer a refund or replacement. For full details of the Abpromise, please visit <http://www.abcam.co.jp/abpromise> or contact our technical team.

Terms and conditions

- Guarantee only valid for products bought direct from Abcam or one of our authorized distributors