

## Product datasheet

# Anti-Cytokeratin 15 antibody [EP1613] ab92330

リコンビナント RabMAb®

### 画像数 1

#### 製品の概要

製品名	Anti-Cytokeratin 15 antibody [EP1613]
製品の詳細	Rabbit monoclonal [EP1613] to Cytokeratin 15
由来種	Rabbit
アプリケーション	<b>適用あり:</b> WB, Flow Cyt <b>適用なし:</b> ICC,IHC-P or IP
種交差性	<b>交差種:</b> Human
免疫原	Synthetic peptide within Human Cytokeratin 15 (N terminal). The exact sequence is proprietary.
ポジティブ・コントロール	A431 cell lysate
特記事項	Mouse, Rat: We have preliminary internal testing data to indicate this antibody may not react with these species. Please contact us for more information.

Our RabMAb® technology is a patented hybridoma-based technology for making rabbit monoclonal antibodies. For details on our patents, please refer to [RabMAb® patents](#)

This product is a recombinant rabbit monoclonal antibody.

#### 製品の特性

製品の状態	Liquid
保存方法	Shipped at 4°C. Upon delivery aliquot and store at -20°C. Avoid freeze / thaw cycles.
バッファー	PBS 49%,Sodium azide 0.01%,Glycerol 50%,BSA 0.05%
精製度	Tissue culture supernatant
ポリ/モノ	モノクローナル
クローン名	EP1613
アイソタイプ	IgG

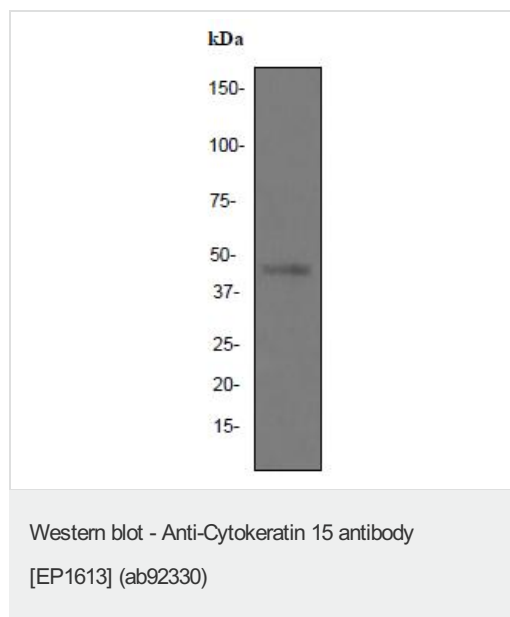
#### アプリケーション

Our [Abpromise guarantee](#) covers the use of **ab92330** in the following tested applications.

The application notes include recommended starting dilutions; optimal dilutions/concentrations should be determined by the end user.

アプリケーション	Abreviews	特記事項
WB		1/500 - 1/1000. Predicted molecular weight: 49 kDa.
Flow Cyt		1/50. <a href="#">ab172730</a> - Rabbit monoclonal IgG, is suitable for use as an isotype control with this antibody.
追加情報		Is unsuitable for ICC,IHC-P or IP.
ターゲット情報		
組織特異性		Expressed in a discontinuous manner in the basal cell layer of adult skin epidermis, but continuously in the basal layer of fetal skin epidermis and nail. Also expressed in the outer root sheath above the hair bulb in hair follicle (at protein level). Expressed homogeneously in all cell layers of the esophagus and exocervix, but detected in the basal cell layer only of oral mucosa, skin and in the basal plus the next two layers of the suprabasal epithelium of the palate.
配列類似性		Belongs to the intermediate filament family.

## 画像



Anti-Cytokeratin 15 antibody [EP1613] (ab92330) at 1/5000 dilution + A431 cell lysate at 10 µg

### Secondary

HRP labelled goat anti-rabbit at 1/2000 dilution

**Predicted band size:** 49 kDa

**Please note:** All products are "FOR RESEARCH USE ONLY AND ARE NOT INTENDED FOR DIAGNOSTIC OR THERAPEUTIC USE"

## Our Abpromise to you: Quality guaranteed and expert technical support

- Replacement or refund for products not performing as stated on the datasheet
- Valid for 12 months from date of delivery
- Response to your inquiry within 24 hours
- We provide support in Chinese, English, French, German, Japanese and Spanish

- Extensive multi-media technical resources to help you
- We investigate all quality concerns to ensure our products perform to the highest standards

If the product does not perform as described on this datasheet, we will offer a refund or replacement. For full details of the Abpromise, please visit <http://www.abcam.co.jp/abpromise> or contact our technical team.

### **Terms and conditions**

---

- Guarantee only valid for products bought direct from Abcam or one of our authorized distributors