


Product datasheet

Anti-Cytochrome b reductase 1 antibody ab66048

★★★★★ 2 Abreviews 画像数 3

製品の概要

製品名	Anti-Cytochrome b reductase 1 antibody
製品の詳細	Rabbit polyclonal to Cytochrome b reductase 1
アプリケーション	適用あり: ICC/IF, IHC-Fr, WB
種交差性	交差種: Mouse, Human 交差が予測される動物種: Rat, Pig, Orangutan 
免疫原	Synthetic peptide conjugated to KLH derived from within residues 50 - 150 of Mouse Cytochrome b reductase 1. Immunogen の所有権に関して Peptide available as ab95410
ポジティブ・コントロール	This antibody gave a positive signal in A20 whole cell lysate. ICC/IF: HeLa cells.

製品の特性

製品の状態	Liquid
保存方法	Shipped at 4°C. Store at +4°C short term (1-2 weeks). Upon delivery aliquot. Store at -20°C or -80°C. Avoid freeze / thaw cycle.
バッファー	Preservative: 0.02% Sodium Azide Constituents: 1% BSA, PBS, pH 7.4
精製度	Immunogen affinity purified
ポリ/モノ	ポリクローナル
アイソタイプ	IgG

アプリケーション

Our [Abpromise guarantee](#) covers the use of **ab66048** in the following tested applications.

The application notes include recommended starting dilutions; optimal dilutions/concentrations should be determined by the end user.

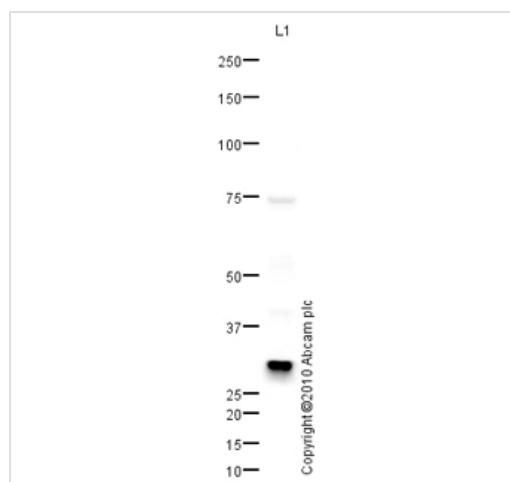
アプリケーション	Abreviews	特記事項
ICC/IF	★★★★★	Use a concentration of 10 µg/ml.
IHC-Fr	★★★★★	Use a concentration of 1 µg/ml.

アプリケーション	Abreviews	特記事項
WB		Use a concentration of 1 µg/ml. Detects a band of approximately 31 kDa (predicted molecular weight: 31 kDa).

ターゲット情報

機能	Ferric-chelate reductase that reduces Fe(3+) to Fe(2+). Present at the brush border of duodenal enterocytes where it probably reduces dietary Fe(3+) thereby facilitating its transport into the mucosal cells. Uses ascorbate as electron donor. May be involved in extracellular ascorbate recycling in erythrocyte membranes. May also act as a ferrireductase in airway epithelial cells.
組織特異性	Present in erythrocyte membranes (at protein level). Also expressed in respiratory epithelium.
配列類似性	Contains 1 cytochrome b561 domain.
細胞内局在	Membrane.

画像



Western blot - Cytochrome b reductase 1 antibody (ab66048)

Anti-Cytochrome b reductase 1 antibody (ab66048) at 1 µg/ml + A20 whole cell lysate (ab7180) at 10 µg

Secondary

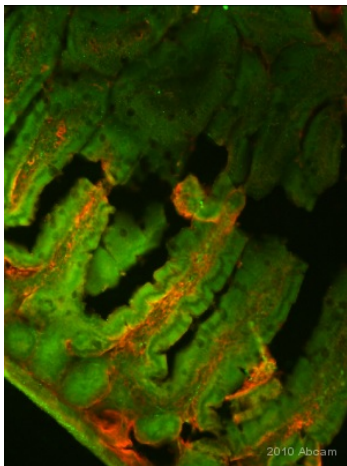
Goat polyclonal to Rabbit IgG - H&L - Pre-Adsorbed (HRP) at 1/3000 dilution
Developed using the ECL technique

Performed under reducing conditions.

Predicted band size : 31 kDa

Observed band size : 31 kDa

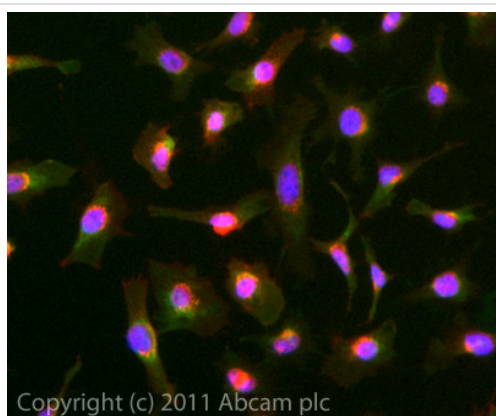
Exposure time : 10 minutes



Immunohistochemistry (Frozen sections) - Anti-Cytochrome b reductase 1 antibody (ab66048)

This image is courtesy of an abreview submitted by Ruma Raha-Chowdhury, University Of Cambridge, United Kingdom

IHC-Fr image of human duodenum section stained with ab66048. The sections were incubated in 10% normal donkey serum in 0.1% PBS- and 0.3x triton100 for 1h to permeabilise the cells and to block non-specific protein-protein interactions. The sections were then incubated with the antibody ab66048, 1 µg/ml) and Anti-Actin overnight at +4°C. The secondary antibody was Alexa Fluor® 488 goat anti-rabbit IgG (H+L) and Fluor®568 donkey anti-mouse IgG (H+L) used at a 1/1000 dilution for 1h. DAPI was used to stain the cell nuclei (blue) at a concentration of 1.43 µM. dCytb stained apical site of duodenum and actin stained muscles and blood vessels.



Immunocytochemistry/ Immunofluorescence - Anti-Cytochrome b reductase 1 antibody (ab66048)

ICC/IF image of ab66048 stained HeLa cells. The cells were 4% PFA fixed (10 min) and then incubated in 1%BSA / 10% normal goat serum / 0.3M glycine in 0.1% PBS-Tween for 1h to permeabilise the cells and block non-specific protein-protein interactions. The cells were then incubated with the antibody (ab66048, 10 µg/ml) overnight at +4°C. The secondary antibody (green) was ab96899 Dylight 488 goat anti-rabbit IgG (H+L) used at a 1/250 dilution for 1h. Alexa Fluor® 594 WGA was used to label plasma membranes (red) at a 1/200 dilution for 1h. DAPI was used to stain the cell nuclei (blue) at a concentration of 1.43 µM.

Please note: All products are "FOR RESEARCH USE ONLY AND ARE NOT INTENDED FOR DIAGNOSTIC OR THERAPEUTIC USE"

Our Abpromise to you: Quality guaranteed and expert technical support

- Replacement or refund for products not performing as stated on the datasheet
- Valid for 12 months from date of delivery
- Response to your inquiry within 24 hours
- We provide support in Chinese, English, French, German, Japanese and Spanish
- Extensive multi-media technical resources to help you
- We investigate all quality concerns to ensure our products perform to the highest standards

If the product does not perform as described on this datasheet, we will offer a refund or replacement. For full details of the Abpromise, please visit <http://www.abcam.co.jp/abpromise> or contact our technical team.

Terms and conditions

- Guarantee only valid for products bought direct from Abcam or one of our authorized distributors