

Product datasheet

Anti-Cytochrome P450 2E1 antibody ab28146

★★★★★ 5 Abreviews 37 References 画像数 4

製品の概要

製品名	Anti-Cytochrome P450 2E1 antibody
製品の詳細	Rabbit polyclonal to Cytochrome P450 2E1
由来種	Rabbit
特異性	The antibody detects a ~50-55 kDa protein, corresponding to the apparent molecular mass of cytochrome P450 IIE1 on SDS-PAGE immunoblots.
アプリケーション	適用あり: IHC-Fr, WB, ICC/IF, IHC-P
種交差性	交差種: Mouse, Rat, Rabbit, Horse, Guinea pig, Dog, Human, Monkey
免疫原	Full length native protein (purified) (Rat)
特記事項	The antibody has been shown to inhibit microsomal benzene metabolism

製品の特性

製品の状態	Liquid
保存方法	Shipped at 4°C. Store at +4°C short term (1-2 weeks). Upon delivery aliquot. Store at -20°C long term. Avoid freeze / thaw cycle.
バッファー	Preservative: 0.09% Sodium Azide Constituents: 50% Glycerol, PBS, pH 7.2
精製度	Protein A purified
一次抗体 備考	The antibody has been shown to inhibit microsomal benzene metabolism
ポリ/モノ	ポリクローナル
アイソタイプ	IgG

アプリケーション

Our [Abpromise guarantee](#) covers the use of **ab28146** in the following tested applications.

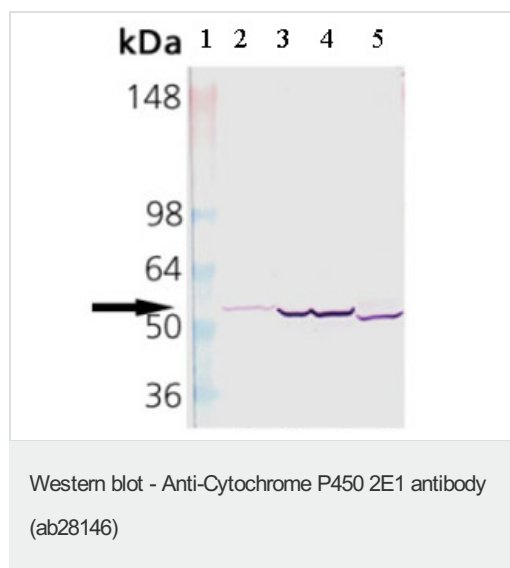
The application notes include recommended starting dilutions; optimal dilutions/concentrations should be determined by the end user.

アプリケーション	Abreviews	特記事項
IHC-Fr	★★★★★	1/300. PubMed: 17021035
WB	★★★★★	1/5000. Predicted molecular weight: 50-55 kDa. This dilution was sufficient for detection of Cytochrome P450 in 20ug of human liver microsomes by colorimetric immunoblot analysis using Goat anti-Rabbit IgG:AP as the secondary antibody.
ICC/IF		1/1000.
IHC-P	★★★★★	Use at an assay dependent concentration. PubMed: 24155903

ターゲット情報

機能	Metabolizes several precarcinogens, drugs, and solvents to reactive metabolites. Inactivates a number of drugs and xenobiotics and also bioactivates many xenobiotic substrates to their hepatotoxic or carcinogenic forms.
配列類似性	Belongs to the cytochrome P450 family.
細胞内局在	Endoplasmic reticulum membrane. Microsome membrane.

画像



All lanes : Anti-Cytochrome P450 2E1 antibody (ab28146) at 1/1000 dilution

Lane 1 : Molecular weight marker

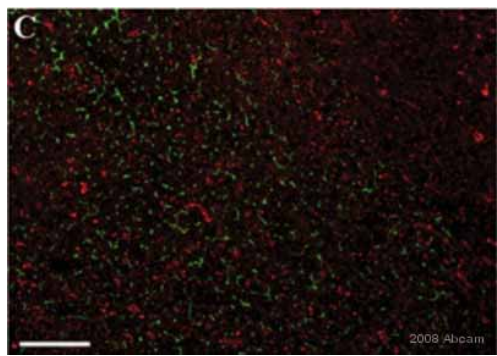
Lane 2 : Cell lysates prepared from human liver microsomes

Lane 3 : Cell lysates prepared from rat liver microsomes

Lane 4 : Cell lysates prepared from mouse liver microsomes

Lane 5 : Cell lysates prepared from rabbit liver microsomes

Predicted band size: 50-55 kDa

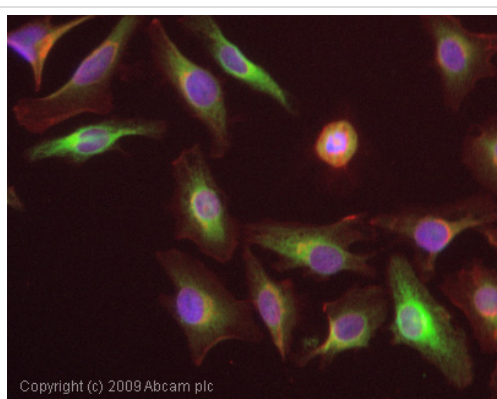


Immunohistochemistry (Frozen sections) - Anti-Cytochrome P450 2E1 antibody (ab28146)

This image is courtesy of an anonymous Abreview

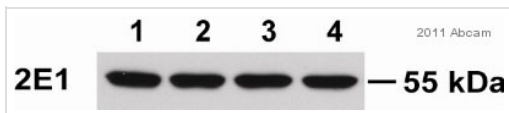
ab28146 staining cells of rat liver sections by IHC-Fr. Cells were fixed in acetone and blocked with 1% BSA for 5 minutes at 25°C prior to incubating with ab28146 diluted 1/300 for 30 minutes at 25°C. An Alexa Fluor® 594 conjugated goat anti-rabbit antibody was used as the secondary.

Double IF labeling with CYP2E1 (Red) and dipeptidyl peptidase IV (Green)



Immunocytochemistry/ Immunofluorescence - Anti-Cytochrome P450 2E1 antibody (ab28146)

ICC/IF image of ab28146 stained HeLa cells. The cells were 4% PFA fixed (10 min) and then incubated in 1%BSA / 10% normal goat serum / 0.3M glycine in 0.1% PBS-Tween for 1h to permeabilise the cells and block non-specific protein-protein interactions. The cells were then incubated with the antibody (ab28146, 1/1000 dilution) overnight at +4°C. The secondary antibody (green) was Alexa Fluor® 488 goat anti-rabbit IgG (H+L) used at a 1/1000 dilution for 1h. Alexa Fluor® 594 WGA was used to label plasma membranes (red) at a 1/200 dilution for 1h. DAPI was used to stain the cell nuclei (blue) at a concentration of 1.43µM.



Western blot - Anti-Cytochrome P450 2E1 antibody (ab28146)

Image courtesy of an anonymous Abreview.

All lanes : Anti-Cytochrome P450 2E1 antibody (ab28146) at 1/2500 dilution

All lanes : Tissue lysate prepared from normal murine liver

Lysates/proteins at 10 µg per lane.

Secondary

All lanes : Goat anti-rabbit IgG-HRP at 1/5000 dilution

Developed using the ECL technique.

Predicted band size: 50-55 kDa

Observed band size: 55 kDa

Exposure time: 3 seconds

Please note: All products are "FOR RESEARCH USE ONLY AND ARE NOT INTENDED FOR DIAGNOSTIC OR THERAPEUTIC USE"

Our Abpromise to you: Quality guaranteed and expert technical support

- Replacement or refund for products not performing as stated on the datasheet
- Valid for 12 months from date of delivery
- Response to your inquiry within 24 hours
- We provide support in Chinese, English, French, German, Japanese and Spanish
- Extensive multi-media technical resources to help you
- We investigate all quality concerns to ensure our products perform to the highest standards

If the product does not perform as described on this datasheet, we will offer a refund or replacement. For full details of the Abpromise, please visit <http://www.abcam.co.jp/abpromise> or contact our technical team.

Terms and conditions

- Guarantee only valid for products bought direct from Abcam or one of our authorized distributors