

Product datasheet

Anti-Cytochrome C antibody ab49879

2 References [画像数 1](#)

製品の概要

製品名	Anti-Cytochrome C antibody
製品の詳細	Sheep polyclonal to Cytochrome C
由来種	Sheep
アプリケーション	適用あり: WB, IHC-P, ICC/IF
種交差性	交差種: Rat, Rabbit, Dog, Human
免疫原	Full length native protein (purified) (Rabbit) conjugated to KLH
ポジティブ・コントロール	Human heart tissue, whole extracts of MCF 7, Jurkat, Rat 1, and MDCK cells.

製品の特性

製品の状態	Liquid
保存方法	Shipped at 4°C. Store at +4°C short term (1-2 weeks). Upon delivery aliquot. Store at -20°C or -80°C. Avoid freeze / thaw cycle.
バッファー	Preservative: 15mM Sodium Azide Constituents: 1% BSA, 0.01M PBS, pH 7.4
ポリ/モノ	ポリクローナル
アイソタイプ	IgG

アプリケーション

Our [Abpromise guarantee](#) covers the use of **ab49879** in the following tested applications.

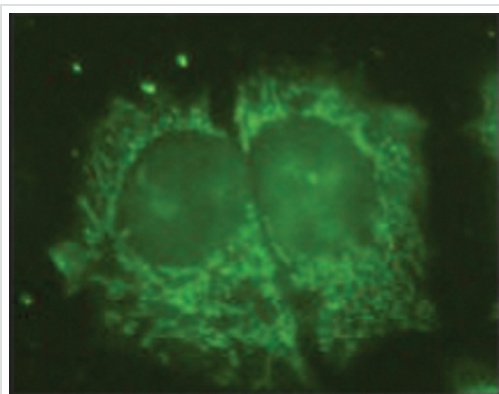
The application notes include recommended starting dilutions; optimal dilutions/concentrations should be determined by the end user.

アプリケーション	Abreviews	特記事項
WB		Use a concentration of 0.1 - 0.2 µg/ml. Predicted molecular weight: 11 kDa.
IHC-P		Use a concentration of 20 - 40 µg/ml.
ICC/IF		Use a concentration of 5 - 10 µg/ml.

ターゲット情報

機能	<p>Electron carrier protein. The oxidized form of the cytochrome c heme group can accept an electron from the heme group of the cytochrome c1 subunit of cytochrome reductase. Cytochrome c then transfers this electron to the cytochrome oxidase complex, the final protein carrier in the mitochondrial electron-transport chain.</p> <p>Plays a role in apoptosis. Suppression of the anti-apoptotic members or activation of the pro-apoptotic members of the Bcl-2 family leads to altered mitochondrial membrane permeability resulting in release of cytochrome c into the cytosol. Binding of cytochrome c to Apaf-1 triggers the activation of caspase-9, which then accelerates apoptosis by activating other caspases.</p>
関連疾患	<p>Defects in CYCS are the cause of thrombocytopenia type 4 (THC4) [MIM:612004]; also known as autosomal dominant thrombocytopenia type 4. Thrombocytopenia is the presence of relatively few platelets in blood. THC4 is a non-syndromic form of thrombocytopenia. Clinical manifestations of thrombocytopenia are absent or mild. THC4 may be caused by dysregulated platelet formation.</p>
配列類似性	<p>Belongs to the cytochrome c family.</p>
翻訳後修飾	<p>Binds 1 heme group per subunit.</p>
細胞内局在	<p>Mitochondrion matrix.</p>

画像



Immunocytochemistry/ Immunofluorescence - Anti-Cytochrome C antibody (ab49879)

ab49879 at 5 µg/ml staining Human MCF-7 cells. Cells were fixed and permeabilized with 3% paraformaldehyde followed by 0.5% TritonX-100 and visualised with Rabbit anti-Sheep IgG, FITC conjugate.

Please note: All products are "FOR RESEARCH USE ONLY AND ARE NOT INTENDED FOR DIAGNOSTIC OR THERAPEUTIC USE"

Our Abpromise to you: Quality guaranteed and expert technical support

- Replacement or refund for products not performing as stated on the datasheet
- Valid for 12 months from date of delivery
- Response to your inquiry within 24 hours
- We provide support in Chinese, English, French, German, Japanese and Spanish
- Extensive multi-media technical resources to help you
- We investigate all quality concerns to ensure our products perform to the highest standards

If the product does not perform as described on this datasheet, we will offer a refund or replacement. For full details of the Abpromise, please visit <http://www.abcam.co.jp/abpromise> or contact our technical team.

Terms and conditions

- Guarantee only valid for products bought direct from Abcam or one of our authorized distributors