


Product datasheet

Anti-Cytochrome C Oxidase subunit VIb antibody ab96692

画像数 1

製品の概要

製品名	Anti-Cytochrome C Oxidase subunit VIb antibody
製品の詳細	Rabbit polyclonal to Cytochrome C Oxidase subunit VIb
由来種	Rabbit
アプリケーション	適用あり: WB
種交差性	交差種: Human 交差が予測される動物種: Monkey 
免疫原	Synthetic peptide, corresponding to a sequence within amino acids 23-86 of Human Cytochrome C Oxidase subunit VIb (NP_001854).
ポジティブ・コントロール	A431, HeLa cell lysates and HepG2 whole cell lysate.

法規制情報

医薬用外毒物

製品の特性

製品の状態	Liquid
保存方法	Shipped at 4°C. Upon delivery aliquot. Store at -20°C or -80°C. Avoid freeze / thaw cycle.
バッファー	Preservative: 0.01% Thimerosal (merthiolate) Constituents: 10% Glycerol, 0.1M Tris, 0.1M Glycine, pH 7.0
精製度	Immunogen affinity purified
ポリ/モノ	ポリクローナル
アイソタイプ	IgG

アプリケーション

Our [Abpromise guarantee](#) covers the use of **ab96692** in the following tested applications.

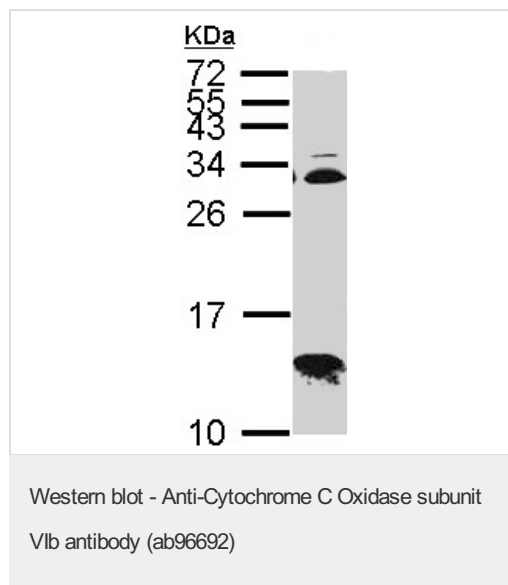
The application notes include recommended starting dilutions; optimal dilutions/concentrations should be determined by the end user.

アプリケーション	Abreviews	特記事項
WB		1/500 - 1/3000. Predicted molecular weight: 10 kDa.

## ターゲット情報

機能	Connects the two COX monomers into the physiological dimeric form.
関連疾患	Defects in COX6B1 are a cause of mitochondrial complex IV deficiency (MT-C4D) [MIM:220110]; also known as cytochrome c oxidase deficiency. A disorder of the mitochondrial respiratory chain with heterogeneous clinical manifestations, ranging from isolated myopathy to severe multisystem disease affecting several tissues and organs. Features include hypertrophic cardiomyopathy, hepatomegaly and liver dysfunction, hypotonia, muscle weakness, exercise intolerance, developmental delay, delayed motor development and mental retardation. A subset of patients manifest Leigh syndrome.
配列類似性	Belongs to the cytochrome c oxidase subunit 6B family.
細胞内局在	Mitochondrion intermembrane space.

## 画像



Anti-Cytochrome C Oxidase subunit Vlb antibody (ab96692) at 1/1000 dilution + HepG2 whole cell lysate at 30 µg

**Predicted band size:** 10 kDa

15% SDS PAGE

**Please note:** All products are "FOR RESEARCH USE ONLY AND ARE NOT INTENDED FOR DIAGNOSTIC OR THERAPEUTIC USE"

## Our Abpromise to you: Quality guaranteed and expert technical support

- Replacement or refund for products not performing as stated on the datasheet
- Valid for 12 months from date of delivery
- Response to your inquiry within 24 hours
- We provide support in Chinese, English, French, German, Japanese and Spanish
- Extensive multi-media technical resources to help you

- We investigate all quality concerns to ensure our products perform to the highest standards

If the product does not perform as described on this datasheet, we will offer a refund or replacement. For full details of the Abpromise, please visit <http://www.abcam.co.jp/abpromise> or contact our technical team.

### **Terms and conditions**

---

- Guarantee only valid for products bought direct from Abcam or one of our authorized distributors