

## Product datasheet

# Anti-Cyclin B1 antibody ab2949

★★★★☆ 4 Abreviews 7 References 画像数 3

### 製品の概要

製品名	Anti-Cyclin B1 antibody
製品の詳細	Rabbit polyclonal to Cyclin B1
由来種	Rabbit
アプリケーション	<b>適用あり:</b> ICC/IF, Sandwich ELISA, IHC-P, IP, WB
種交差性	<b>交差種:</b> Mouse, Rat, Human
免疫原	Synthetic peptide corresponding to Cyclin B1 (C terminal). Database link: <a href="#">P14635</a>
ポジティブ・コントロール	Jurkat, Ls174T or HeLa cells. Breast carcinoma tissue section.

### 製品の特性

製品の状態	Liquid
保存方法	Shipped at 4°C. Upon delivery aliquot and store at -20°C. Avoid freeze / thaw cycles.
バッファー	Preservative: 0.09% Sodium Azide Constituents: 0.2% BSA, 10mM PBS, pH 7.4
精製度	Protein A purified
ポリ/モノ	ポリクローナル
アイソタイプ	IgG

### アプリケーション

Our [Abpromise guarantee](#) covers the use of **ab2949** in the following tested applications.

The application notes include recommended starting dilutions; optimal dilutions/concentrations should be determined by the end user.

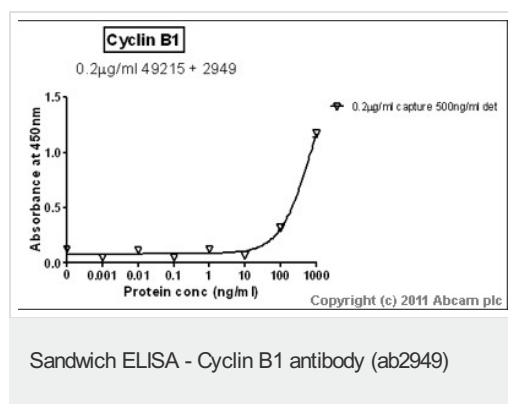
アプリケーション	Abreviews	特記事項
ICC/IF	★★★★☆	Use at an assay dependent concentration.
Sandwich ELISA		Use a concentration of 0.2 µg/ml. For sandwich ELISA, use this antibody as Detection at 0.2 µg/ml with <a href="#">Mouse monoclonal [7A9] to Cyclin B1 (ab49215)</a> as Capture.

アプリケーション	Abreviews	特記事項
IHC-P		Use a concentration of 10 - 20 µg/ml. Perform heat mediated antigen retrieval before commencing with IHC staining protocol.
IP		Use at 10 µg/mg of lysate.
WB	★★★★☆	Use at an assay dependent concentration. Detects a band of approximately 60 kDa (predicted molecular weight: 48 kDa).

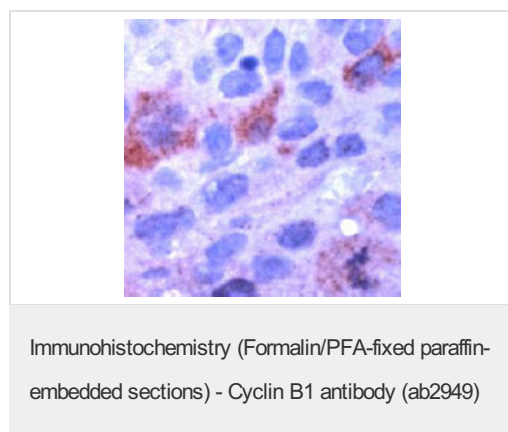
## ターゲット情報

機能	Essential for the control of the cell cycle at the G2/M (mitosis) transition.
配列類似性	Belongs to the cyclin family. Cyclin AB subfamily.
発生段階	Accumulates steadily during G2 and is abruptly destroyed at mitosis.
翻訳後修飾	Ubiquitinated by the SCF(NIPA) complex during interphase, leading to its destruction. Not ubiquitinated during G2/M phases.
細胞内局在	Cytoplasm. Nucleus. Cytoplasm > cytoskeleton > centrosome.

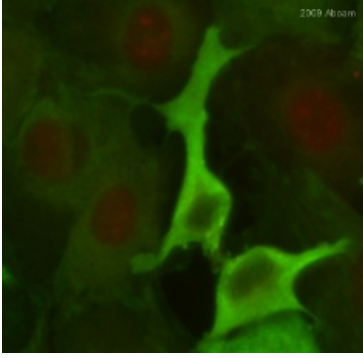
## 画像



Standard Curve for Cyclin B1 (Analyte: [Cyclin B1 protein \(His tag\) \(ab40591\)](#)); dilution range 1µg/ml to 1µg/ml using Capture Antibody [Mouse monoclonal \[7A9\] to Cyclin B1 \(ab49215\)](#) at 0.2µg/ml and Detector Antibody [Rabbit polyclonal to Cyclin B1 \(ab2949\)](#) at 0.2µg/ml.



Breast carcinoma stained with ab2949



Immunocytochemistry/ Immunofluorescence - Cyclin B1 antibody (ab2949)

This image is a courtesy of Anonymous Abreview

ab2949 staining Cyclin B1 in mouse MEF cells by Immunocytochemistry/ immunofluorescence. Cells were fixed with paraformaldehyde and blocking with 2% serum was performed for 2 hours at 25<sup>0</sup>C. Samples were incubated with primary antibody (1/100: in 1% BSA, 0.3% Triton X-100 in PBS) for 18 hours at 4°C. An Alexa Fluor<sup>®</sup>594-conjugated goat polyclonal to rabbit IgG was used diluted 1/1000 as secondary antibody. Red is cyclinB1 staining, blue is DAPI staining DNA for nuclei, green is vinculin staining.

**Please note:** All products are "FOR RESEARCH USE ONLY AND ARE NOT INTENDED FOR DIAGNOSTIC OR THERAPEUTIC USE"

### Our Abpromise to you: Quality guaranteed and expert technical support

- Replacement or refund for products not performing as stated on the datasheet
- Valid for 12 months from date of delivery
- Response to your inquiry within 24 hours
- We provide support in Chinese, English, French, German, Japanese and Spanish
- Extensive multi-media technical resources to help you
- We investigate all quality concerns to ensure our products perform to the highest standards

If the product does not perform as described on this datasheet, we will offer a refund or replacement. For full details of the Abpromise, please visit <http://www.abcam.co.jp/abpromise> or contact our technical team.

### Terms and conditions

- Guarantee only valid for products bought direct from Abcam or one of our authorized distributors