

Product datasheet

Anti-Cullin 2 antibody ab43562

1 References [画像数 1](#)

製品の概要

製品名	Anti-Cullin 2 antibody
製品の詳細	Mouse polyclonal to Cullin 2
アプリケーション	適用あり: IP, WB
種交差性	交差種: Human 交差が予測される動物種: Mouse, Cow, Orangutan
免疫原	Vector coding for a partial recombinant fusion protein, corresponding to internal sequence amino acids 161-260 of Human Cullin 2. Target sequence used to make the antibody: RMLLREIKND RGGEDPNQKV IHGVINSFVH VEQYKKKFPL KFYQEIFESP FLTETGEYYK QEASNLLQES NCSQYMEKVL GRLKDEEIRC RLYLHPSSYT. Run BLAST with ExPASy Run BLAST with NCBI

製品の特性

製品の状態	Liquid
保存方法	Shipped at 4°C. Upon delivery aliquot and store at -20°C. Avoid freeze / thaw cycles.
バッファー	Preservative: None Constituents: 50% Glycerol, Whole serum.
精製度	Whole antiserum
ポリ/モノ	ポリクローナル
アイソタイプ	IgG

アプリケーション

Our [Abpromise guarantee](#) covers the use of **ab43562** in the following tested applications.

The application notes include recommended starting dilutions; optimal dilutions/concentrations should be determined by the end user.

アプリケーション	Abreviews	特記事項
IP		
WB		

追加情報

IP: Use at an assay dependent dilution (PMID 19622774).

WB: 1/1000. Predicted molecular weight: 87 kDa.

Not yet tested in other applications.

Optimal dilutions/concentrations should be determined by the end user.

ターゲット情報

機能

Core component of multiple cullin-RING-based ECS (ElonginB/C-CUL2/5-SOCS-box protein) E3 ubiquitin-protein ligase complexes, which mediate the ubiquitination of target proteins. May serve as a rigid scaffold in the complex and may contribute to catalysis through positioning of the substrate and the ubiquitin-conjugating enzyme. The E3 ubiquitin-protein ligase activity of the complex is dependent on the neddylation of the cullin subunit and is inhibited by the association of the deneddylated cullin subunit with TIP120A/CAND1 (By similarity). The functional specificity of the ECS complex depends on the substrate recognition component. ECS(VHL) mediates the ubiquitination of hypoxia-inducible factor (HIF).

パスウェイ

Protein modification; protein ubiquitination.

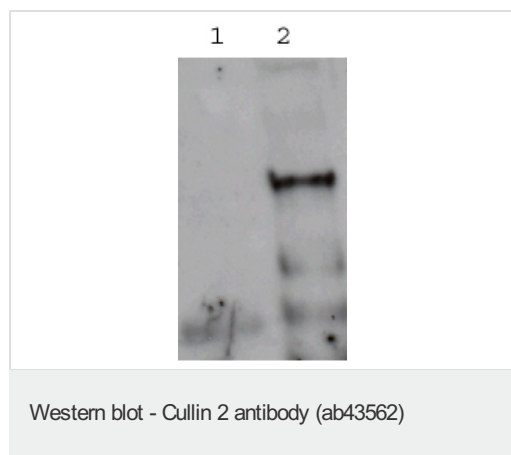
配列類似性

Belongs to the cullin family.

翻訳後修飾

CBC(VHL) complex formation seems to promote neddylation. Deneddylated via its interaction with the COP9 signalosome (CSN) complex.

画像



All lanes : Anti-Cullin 2 antibody (ab43562) at 1/1000 dilution

Lane 1 : Total protein extract from E coli with 50ng to 100 ng of a tagged fusion protein of an irrelevant antigen

Lane 2 : Total protein extract from E coli with 50ng to 500ng of the antigen (tagged fusion protein).

Lysates/proteins at 20 µg per lane.

Secondary

Rabbit anti-mouse IgG + IgM, HRP conjugated, at 1/5000 dilution

Predicted band size : 87 kDa

Please note: All products are "FOR RESEARCH USE ONLY AND ARE NOT INTENDED FOR DIAGNOSTIC OR THERAPEUTIC USE"

Our Abpromise to you: Quality guaranteed and expert technical support

- Replacement or refund for products not performing as stated on the datasheet
- Valid for 12 months from date of delivery
- Response to your inquiry within 24 hours

- We provide support in Chinese, English, French, German, Japanese and Spanish
- Extensive multi-media technical resources to help you
- We investigate all quality concerns to ensure our products perform to the highest standards

If the product does not perform as described on this datasheet, we will offer a refund or replacement. For full details of the Abpromise, please visit <http://www.abcam.co.jp/abpromise> or contact our technical team.

Terms and conditions

- Guarantee only valid for products bought direct from Abcam or one of our authorized distributors