

Product datasheet

Anti-Centlein antibody ab122356

画像数 3

製品の概要

製品名	Anti-Centlein antibody
製品の詳細	Rabbit polyclonal to Centlein
アプリケーション	適用あり: IHC-P, WB, ICC/IF
種交差性	交差種: Human
免疫原	antigen sequence: LIEARKEVEV SQSKYNALSL QLSNKQTELI QKDMDITLVR KELQELQNLV KQNSTHTAQQ AELIQQLQVL NMDTQKVLRLN QEDVHTAESI S corresponding to amino acids 289-379 of Human Centlein. Run BLAST with ExPASy Run BLAST with NCBI
ポジティブ・コントロール	Human liver tissue; Human liver lysate; Human cell line U-251 MG

製品の特性

製品の状態	Liquid
保存方法	Shipped at 4°C. Upon delivery aliquot and store at -20°C. Avoid freeze / thaw cycles.
バッファー	pH: 7.20 Preservative: 0.02% Sodium azide Constituents: 59% PBS, 40% Glycerol
精製度	Immunogen affinity purified
ポリ/モノ	ポリクローナル
アイソタイプ	IgG

アプリケーション

Our [Abpromise guarantee](#) covers the use of **ab122356** in the following tested applications.

The application notes include recommended starting dilutions; optimal dilutions/concentrations should be determined by the end user.

アプリケーション	Abreviews	特記事項
IHC-P		1/50 - 1/200. Perform heat mediated antigen retrieval with citrate buffer pH 6 before commencing with IHC staining protocol.

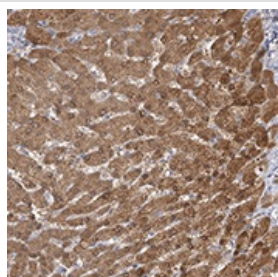
アプリケーション	Abreviews	特記事項
WB		1/250 - 1/500.
ICC/IF		Use a concentration of 1 - 4 µg/ml. Fixation/Permeabilization: PFA/Triton X-100.

ターゲット情報

細胞内局在

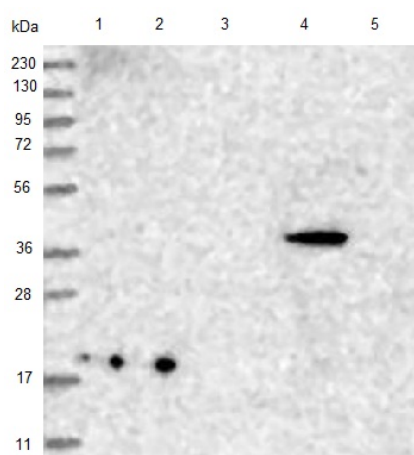
Cytoplasm > cytoskeleton > centrosome > centriole. Colocalizes with gamma-tubulin during interphase and mitosis. Appears to associated with the mother centriole during G1 phase and with daughter centrioles towards G1/S phase.

画像



ab122356, at 1/60 dilution, staining Centlein in paraffin-embedded Human liver tissue by Immunohistochemistry.

Immunohistochemistry (Formalin/PFA-fixed paraffin-embedded sections) - Anti-Centlein antibody (ab122356)



All lanes : Anti-Centlein antibody (ab122356) at 1/250 dilution

Lane 1 : RT-4 cell lysate

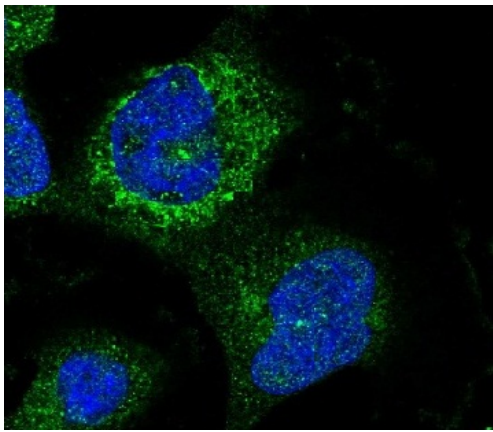
Lane 2 : U-251 MG cell lysate

Lane 3 : Human plasma lysate

Lane 4 : Human liver lysate

Lane 5 : Human tonsil lysate

Western blot - Anti-Centlein antibody (ab122356)



ab122356, at 4 $\mu\text{g/ml}$, staining Centlein in Human cell line U-251 MG by Immunofluorescence. Antibody staining is shown in green.

Immunocytochemistry/ Immunofluorescence - Anti-Centlein antibody (ab122356)

Please note: All products are "FOR RESEARCH USE ONLY AND ARE NOT INTENDED FOR DIAGNOSTIC OR THERAPEUTIC USE"

Our Abpromise to you: Quality guaranteed and expert technical support

- Replacement or refund for products not performing as stated on the datasheet
- Valid for 12 months from date of delivery
- Response to your inquiry within 24 hours
- We provide support in Chinese, English, French, German, Japanese and Spanish
- Extensive multi-media technical resources to help you
- We investigate all quality concerns to ensure our products perform to the highest standards

If the product does not perform as described on this datasheet, we will offer a refund or replacement. For full details of the Abpromise, please visit <http://www.abcam.co.jp/abpromise> or contact our technical team.

Terms and conditions

- Guarantee only valid for products bought direct from Abcam or one of our authorized distributors