

Product datasheet

Anti-Cdc7 Kinase antibody [DCS-341] ab10535

★★★★★ 2 Abreviews 4 References 画像数 2

製品の概要

製品名	Anti-Cdc7 Kinase antibody [DCS-341]
製品の詳細	Mouse monoclonal [DCS-341] to Cdc7 Kinase
由来種	Mouse
アプリケーション	適用あり: ELISA, WB, IP, ICC
種交差性	交差種: Human
免疫原	Full length protein (Human).
ポジティブ・コントロール	A431 whole cell lysate.
特記事項	Abcam is committed to meeting high standards of ethical manufacturing and as such, we will be discontinuing this product, which has been generated by the ascites method, within the next year. We are sorry for any inconvenience this may cause. If you would like help finding an alternative product, please do not hesitate to contact our scientific support team.

製品の特性

製品の状態	Liquid
保存方法	Shipped at 4°C. Upon delivery aliquot and store at -20°C. Avoid freeze / thaw cycles.
バッファー	Preservative: 15mM Sodium Azide Constituents: 0.01M PBS, pH 7.4
精製度	Protein G purified
ポリ/モノ	モノクローナル
クローン名	DCS-341
アイソタイプ	IgG1

アプリケーション

Our [Abpromise guarantee](#) covers the use of **ab10535** in the following tested applications.

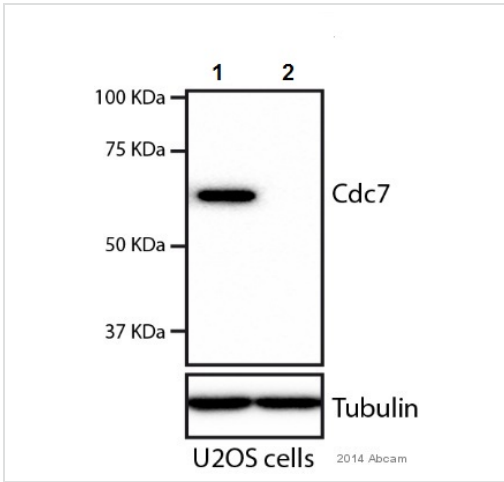
The application notes include recommended starting dilutions; optimal dilutions/concentrations should be determined by the end user.

アプリケーション	Abreviews	特記事項
ELISA		Use at an assay dependent dilution.
WB	★★★★★	Use a concentration of 0.4 µg/ml. Detects a band of approximately 55 kDa (predicted molecular weight: 64 kDa).
IP		Use at an assay dependent dilution.
ICC		Use at an assay dependent dilution.

ターゲット情報

機能	Seems to phosphorylate critical substrates that regulate the G1/S phase transition and/or DNA replication. Can phosphorylates MCM2 and MCM3.
配列類似性	Belongs to the protein kinase superfamily. Ser/Thr protein kinase family. CDC7 subfamily. Contains 1 protein kinase domain.
細胞内局在	Nucleus.

画像



Western blot - Anti-Cdc7 Kinase antibody [DCS-341] (ab10535)

This image is courtesy of an Abreview submitted by Remi Buisson

All lanes : Anti-Cdc7 Kinase antibody [DCS-341] (ab10535) at 1/1000 dilution

Lane 1 : U2OS Cell lysate with siRNA control (scramble siRNA) siCdc7

Lane 2 : U2OS Cell Lysate with siRNA against Cdc7

Lysates/proteins at 10 µg per lane.

Secondary

Lane 1 : Goat anti-mouse monoclonal conjugated to HRP at 1/1000 dilution

Lane 2 : Goat anti-Mouse monoclonal conjugated to HRP at 1/1000 dilution

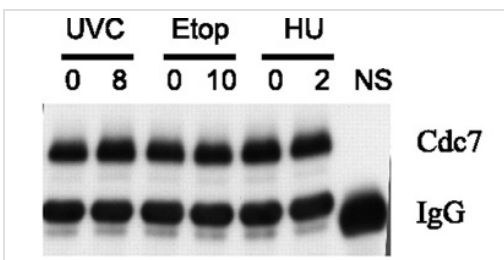
Developed using the ECL technique.

Performed under reducing conditions.

Predicted band size: 64 kDa

Blocking Step: 1 hour at room temperature with 5% Milk in TBS.

Diluent: 5% Milk in TBS.



Western blot - Anti-Cdc7 Kinase antibody [DCS-341] (ab10535)

Image from Heffernan TP et al, J Biol Chem. 2007 Mar 30;282(13):9458-68. Epub 2007 Feb 2, Fig 7, DOI 10.1074/jbc.M611292200

FLAG-Dbf4 forms a complex with endogenous Cdc7 following DNA damage. HeLa cells were transiently transfected with a FLAG-Dbf4 expression vector. 48 hours later cells were treated with 8 J/m² UVC, 10 µm etoposide, or 2 mm HU. Cells were harvested 1 hour later and FLAG-Dbf4 immunoprecipitated with anti-FLAG-agarose (NS corresponds to immunoprecipitation with normal mouse IgG). The effect of DNA damage on Cdc7-Dbf4 complex formation was measured by Western immunoblot analysis using ab10535.

Our Abpromise to you: Quality guaranteed and expert technical support

- Replacement or refund for products not performing as stated on the datasheet
- Valid for 12 months from date of delivery
- Response to your inquiry within 24 hours

- We provide support in Chinese, English, French, German, Japanese and Spanish
- Extensive multi-media technical resources to help you
- We investigate all quality concerns to ensure our products perform to the highest standards

If the product does not perform as described on this datasheet, we will offer a refund or replacement. For full details of the Abpromise, please visit <http://www.abcam.co.jp/abpromise> or contact our technical team.

Terms and conditions

- Guarantee only valid for products bought direct from Abcam or one of our authorized distributors