


Product datasheet

Anti-Cdc27 antibody ab21386

1 References [画像数 1](#)

製品の概要

製品名	Anti-Cdc27 antibody
製品の詳細	Rabbit polyclonal to Cdc27
由来種	Rabbit
アプリケーション	<b>適用あり:</b> ELISA, WB, ICC/IF
種交差性	交差種: Human 交差が予測される動物種: Chicken 
免疫原	Synthetic peptide: NINDSLEIT , corresponding to Internal sequence amino acids 422-430 of Human Cdc27. <a href="#">Run BLAST with</a> <a href="#">Run BLAST with</a>
ポジティブ・コントロール	Hela whole cell lysate

製品の特性

製品の状態	Liquid
保存方法	Shipped at 4°C. Upon delivery aliquot and store at -20°C. Avoid freeze / thaw cycles.
バッファー	Preservative: 0.01% Sodium Azide Constituents: 0.15M Sodium chloride, 0.02mM Potassium phosphate. pH 7.2
精製度	Immunogen affinity purified
ポリ/モノ	ポリクローナル
アイソタイプ	IgG

アプリケーション

Our [Abpromise guarantee](#) covers the use of **ab21386** in the following tested applications.

The application notes include recommended starting dilutions; optimal dilutions/concentrations should be determined by the end user.

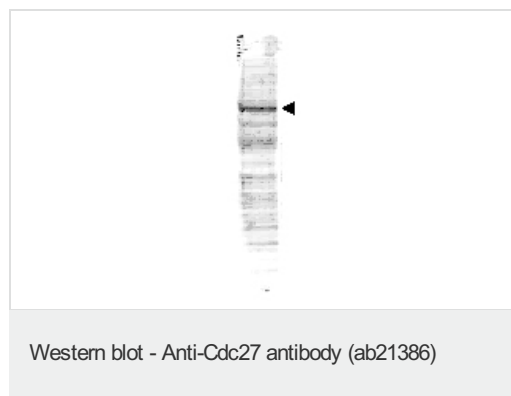
アプリケーション	Abreviews	特記事項
ELISA		1/5000 - 1/40000.

アプリケーション	Abreviews	特記事項
WB		1/500 - 1/2000. Detects a band of approximately 90 kDa (predicted molecular weight: 92 kDa).
ICC/IF		Use at an assay dependent dilution.

## ターゲット情報

機能	Component of the anaphase promoting complex/cyclosome (APC/C), a cell cycle-regulated E3 ubiquitin ligase that controls progression through mitosis and the G1 phase of the cell cycle. The APC/C complex acts by mediating ubiquitination and subsequent degradation of target proteins: it mainly mediates the formation of 'Lys-11'-linked polyubiquitin chains and, to a lower extent, the formation of 'Lys-48'- and 'Lys-63'-linked polyubiquitin chains.
パスウェイ	Protein modification; protein ubiquitination.
配列類似性	Belongs to the APC3/CDC27 family. Contains 9 TPR repeats.
翻訳後修飾	Phosphorylated. Phosphorylation on Ser-426 and Thr-446 occurs specifically during mitosis.
細胞内局在	Nucleus.

## 画像



Anti-Cdc27 antibody (ab21386) at 1 µg/ml +  
Hela whole cell lysate at 35 µg

### Secondary

Goat anti-Rabbit IgG at 1/10000 dilution

**Predicted band size:** 92 kDa

**Observed band size:** 90 kDa

**Please note:** All products are "FOR RESEARCH USE ONLY AND ARE NOT INTENDED FOR DIAGNOSTIC OR THERAPEUTIC USE"

## Our Abpromise to you: Quality guaranteed and expert technical support

- Replacement or refund for products not performing as stated on the datasheet
- Valid for 12 months from date of delivery
- Response to your inquiry within 24 hours
- We provide support in Chinese, English, French, German, Japanese and Spanish
- Extensive multi-media technical resources to help you
- We investigate all quality concerns to ensure our products perform to the highest standards

If the product does not perform as described on this datasheet, we will offer a refund or replacement. For full details of the Abpromise,

please visit <http://www.abcam.co.jp/abpromise> or contact our technical team.

## Terms and conditions

---

- Guarantee only valid for products bought direct from Abcam or one of our authorized distributors