

Product datasheet

Anti-Cdc25B (phospho S149) antibody ab104739

画像数 1

製品の概要

製品名	Anti-Cdc25B (phospho S149) antibody
製品の詳細	Rabbit polyclonal to Cdc25B (phospho S149)
由来種	Rabbit
特異性	ab104739 detects endogenous level Cdc25B protein only when phosphorylated at serine 149.
アプリケーション	適用あり: WB
種交差性	交差種: Mouse
免疫原	Synthetic peptide within Mouse Cdc25B aa 147-151 (phospho S149) conjugated to Keyhole Limpet Haemocyanin (KLH). The exact sequence is proprietary. (Isoform b). Sequence: FRS(p)LP Database link: NP_001104545.1
	Run BLAST with Run BLAST with
ポジティブ・コントロール	3T3 cell line lysate.

製品の特性

製品の状態	Liquid
保存方法	Shipped at 4°C. Store at -20°C. Stable for 12 months at -20°C.
バッファー	Preservative: 0.02% Sodium Azide Constituents: 50% Glycerol, PBS (without Mg ²⁺ and Ca ²⁺), 150mM Sodium chloride, pH 7.4
精製度	Immunogen affinity purified
ポリ/モノ	ポリクローナル
アイソタイプ	IgG

アプリケーション

Our [Abpromise guarantee](#) covers the use of **ab104739** in the following tested applications.

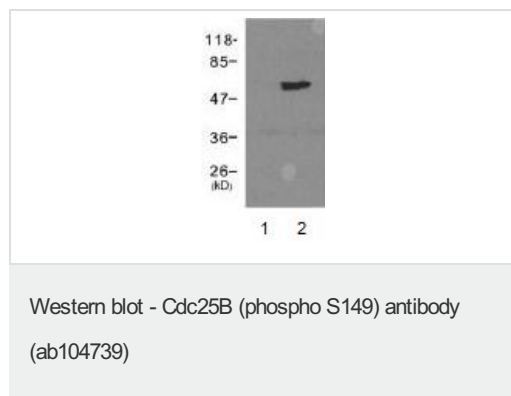
The application notes include recommended starting dilutions; optimal dilutions/concentrations should be determined by the end user.

アプリケーション	Abreviews	特記事項
WB		1/500 - 1/1000. Predicted molecular weight: 65 kDa.

ターゲット情報

機能	Tyrosine protein phosphatase which functions as a dosage-dependent inducer of mitotic progression. Required for G2/M phases of the cell cycle progression and abscission during cytokinesis in a ECT2-dependent manner. Directly dephosphorylates CDK1 and stimulates its kinase activity. The three isoforms seem to have a different level of activity.
配列類似性	Belongs to the MPI phosphatase family. Contains 1 rhodanese domain.
翻訳後修飾	Phosphorylated by BRSK1 in vitro. Phosphorylated by CHEK1, which inhibits the activity of this protein. Phosphorylation at Ser-353 by AURKA might locally participate in the control of the onset of mitosis. Phosphorylation by MELK at Ser-169 promotes localization to the centrosome and the spindle poles during mitosis. Phosphorylation at Ser-323 and Ser-375 by MAPK14 is required for binding to 14-3-3 proteins.
細胞内局在	Cytoplasm, cytoskeleton, microtubule organizing center, centrosome. Cytoplasm, cytoskeleton, spindle pole.

画像



All lanes : Anti-Cdc25B (phospho S149) antibody (ab104739) at 1/500 dilution

Lane 1 : 3T3 cell line lysate (untreated)

Lane 2 : 3T3 cell line lysate (treated with hydroxyurea)

Predicted band size: 65 kDa

Please note: All products are "FOR RESEARCH USE ONLY AND ARE NOT INTENDED FOR DIAGNOSTIC OR THERAPEUTIC USE"

Our Abpromise to you: Quality guaranteed and expert technical support

- Replacement or refund for products not performing as stated on the datasheet
- Valid for 12 months from date of delivery
- Response to your inquiry within 24 hours
- We provide support in Chinese, English, French, German, Japanese and Spanish
- Extensive multi-media technical resources to help you
- We investigate all quality concerns to ensure our products perform to the highest standards

If the product does not perform as described on this datasheet, we will offer a refund or replacement. For full details of the Abpromise, please visit <http://www.abcam.co.jp/abpromise> or contact our technical team.

Terms and conditions

- Guarantee only valid for products bought direct from Abcam or one of our authorized distributors