

Product datasheet

Anti-Cathepsin D antibody [EPR3056Y] ab75811

リコンビナント RabMAb[®]

★★★★☆ 1 Abreviews 画像数 3

製品の概要

製品名	Anti-Cathepsin D antibody [EPR3056Y]
製品の詳細	Rabbit monoclonal [EPR3056Y] to Cathepsin D
由来種	Rabbit
アプリケーション	適用あり: Flow Cyt, WB, IHC-P, ICC 適用なし: IP
種交差性	交差種: Human
免疫原	Synthetic peptide within Human Cathepsin D aa 50-150 (N terminal). The exact sequence is proprietary.
ポジティブ・コントロール	MCF-7 and SKBR3 cell lysates. Human liver tissue.
特記事項	Mouse, Rat: We have preliminary internal testing data to indicate this antibody may not react with these species. Please contact us for more information.

Our RabMAb[®] technology is a patented hybridoma-based technology for making rabbit monoclonal antibodies. For details on our patents, please refer to [RabMAb[®] patents](#)

This product is a recombinant rabbit monoclonal antibody.

製品の特性

製品の状態	Liquid
保存方法	Shipped at 4°C. Upon delivery aliquot and store at -20°C. Avoid freeze / thaw cycles.
バッファー	PBS 49%, Sodium azide 0.01%, Glycerol 50%, BSA 0.05%
精製度	Tissue culture supernatant
ポリ/モノ	モノクローナル
クローン名	EPR3056Y
アイソタイプ	IgG

アプリケーション

Our [Abpromise guarantee](#) covers the use of **ab75811** in the following tested applications.

The application notes include recommended starting dilutions; optimal dilutions/concentrations should be determined by the end user.

アプリケーション	Abreviews	特記事項
Flow Cyt		
WB		
IHC-P	★★★★☆	
ICC		

追加情報

ICC: 1/100 - 1/250.

IHC-P: 1/500. Perform heat mediated antigen retrieval using 0.01M Sodium Citrate Buffer, pH 6.0 before commencing with IHC staining protocol.

WB: 1/1000 - 1/2000. Detects a band of approximately 46 kDa (predicted molecular weight: 46 kDa).

Is unsuitable for Flow Cyt or IP.

Not yet tested in other applications.

Optimal dilutions/concentrations should be determined by the end user.

ターゲット情報

機能

Acid protease active in intracellular protein breakdown. Involved in the pathogenesis of several diseases such as breast cancer and possibly Alzheimer disease.

組織特異性

Expressed in the aorta extracellular space (at protein level).

関連疾患

Ceroid lipofuscinosis, neuronal, 10

配列類似性

Belongs to the peptidase A1 family.
Contains 1 peptidase A1 domain.

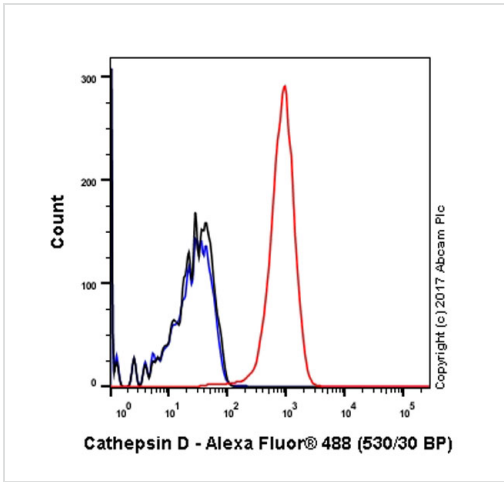
翻訳後修飾

N- and O-glycosylated.

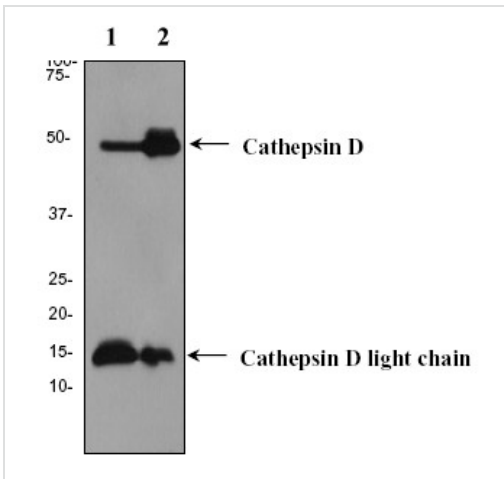
細胞内局在

Lysosome. Melanosome. Secreted, extracellular space. Identified by mass spectrometry in melanosome fractions from stage I to stage IV. In aortic samples, detected as an extracellular protein loosely bound to the matrix (PubMed:20551380).

画像



Flow Cytometry - Anti-Cathepsin D antibody
[EPR3056Y] (ab75811)



Western blot - Anti-Cathepsin D antibody
[EPR3056Y] (ab75811)

All lanes : Anti-Cathepsin D antibody
[EPR3056Y] (ab75811) at 1/1000 dilution

Lane 1 : MCF-7 cell lysate

Lane 2 : SKBR3
cell lysate

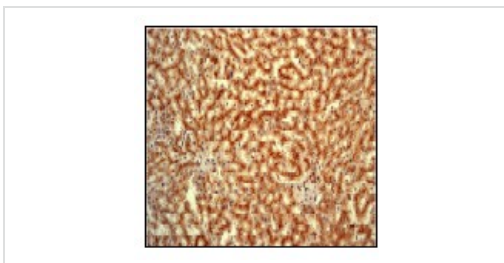
Lysates/proteins at 10 µg per lane.

Secondary

All lanes : HRP labelled goat anti-rabbit at
1/2000 dilution

Predicted band size: 46 kDa

Observed band size: 15,46 kDa



Immunohistochemistry (Formalin/PFA-fixed paraffin-
embedded sections) - Anti-Cathepsin D antibody
[EPR3056Y] (ab75811)

Immunohistochemical analysis of paraffin-
embedded human liver using ab75811 at
1/500 dilution.

Our Abpromise to you: Quality guaranteed and expert technical support

- Replacement or refund for products not performing as stated on the datasheet
- Valid for 12 months from date of delivery
- Response to your inquiry within 24 hours

- We provide support in Chinese, English, French, German, Japanese and Spanish
- Extensive multi-media technical resources to help you
- We investigate all quality concerns to ensure our products perform to the highest standards

If the product does not perform as described on this datasheet, we will offer a refund or replacement. For full details of the Abpromise, please visit <http://www.abcam.co.jp/abpromise> or contact our technical team.

Terms and conditions

- Guarantee only valid for products bought direct from Abcam or one of our authorized distributors