

Product datasheet

Anti-Caspase-6 antibody [EPR4405] ab108335

リコンビナント RabMAb®

★★★★☆ 3 Abreviews 1 References 画像数 2

製品の概要

製品名	Anti-Caspase-6 antibody [EPR4405]
製品の詳細	Rabbit monoclonal [EPR4405] to Caspase-6
特異性	ab108335 detects both the full length and cleaved forms of Caspase-6.
アプリケーション	適用あり: WB, IP, Flow Cyt 適用なし: ICC or IHC-P
種交差性	交差種: Mouse, Rat, Human
免疫原	Synthetic peptide (the amino acid sequence is considered to be commercially sensitive) corresponding to Human Caspase-6 aa 150-250. Database link: P55212
ポジティブ・コントロール	Jurkat cells and cell lysate.
特記事項	This product is a recombinant rabbit monoclonal antibody. A trial size is available to purchase for this antibody. Our RabMAb® technology is a patented hybridoma-based technology for making rabbit monoclonal antibodies. For details on our patents, please refer to RabMAb® patents

製品の特性

製品の状態	Liquid
保存方法	Shipped at 4°C. Store at +4°C short term (1-2 weeks). Upon delivery aliquot. Store at -20°C. Avoid freeze / thaw cycle.
バッファー	PBS 49%, Sodium azide 0.01%, Glycerol 50%, BSA 0.05%
精製度	Tissue culture supernatant
ポリ/モノ	モノクローナル
クローン名	EPR4405
アイソタイプ	IgG

アプリケーション

Our [Abpromise guarantee](#) covers the use of **ab108335** in the following tested applications.

The application notes include recommended starting dilutions; optimal dilutions/concentrations should be determined by the end user.

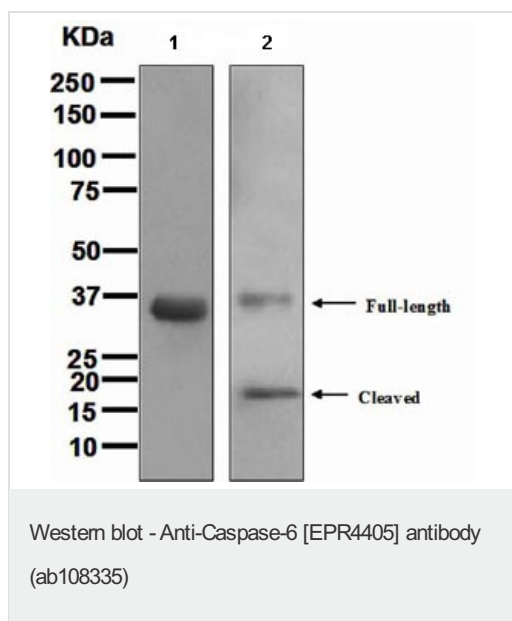
アプリケーション	Abreviews	特記事項
WB		1/1000 - 1/10000. Predicted molecular weight: 33 kDa.
IP		1/10 - 1/100.
Flow Cyt	★★★★☆	1/10 - 1/100. ab172730 -Rabbit monoclonal IgG, is suitable for use as an isotype control with this antibody.

追加情報 Is unsuitable for ICC or IHC-P.

ターゲット情報

機能	Involved in the activation cascade of caspases responsible for apoptosis execution. Cleaves poly(ADP-ribose) polymerase in vitro, as well as lamins. Overexpression promotes programmed cell death.
配列類似性	Belongs to the peptidase C14A family.
翻訳後修飾	Cleavages by caspase-3, caspase-8 or -10 generate the two active subunits.
細胞内局在	Cytoplasm.

Anti-Caspase-6 antibody [EPR4405] 画像

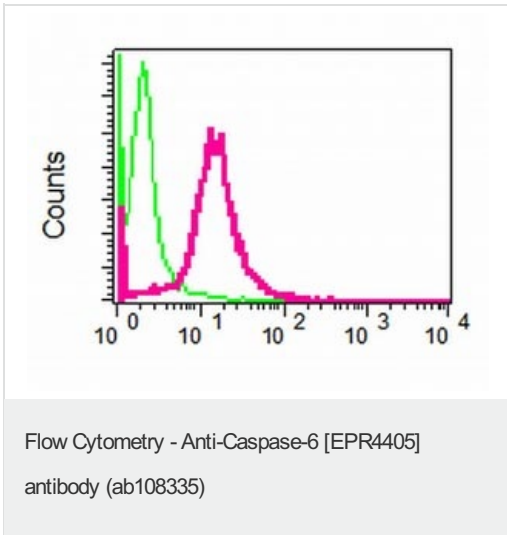


All lanes : Anti-Caspase-6 antibody [EPR4405] (ab108335) at 1/1000 dilution

Lane 1 : Jurkat cell lysate
Lane 2 : Jurkat + staurosporine cell lysate

Lysates/proteins at 10 µg per lane.

Predicted band size : 33 kDa



ab108335, at 1:10 dilution, staining Caspase-6 in permeabilized Jurkat cells by Flow cytometry (shown in red). Rabbit IgG shown in green (negative).

Please note: All products are "FOR RESEARCH USE ONLY AND ARE NOT INTENDED FOR DIAGNOSTIC OR THERAPEUTIC USE"

Our Abpromise to you: Quality guaranteed and expert technical support

- Replacement or refund for products not performing as stated on the datasheet
- Valid for 12 months from date of delivery
- Response to your inquiry within 24 hours
- We provide support in Chinese, English, French, German, Japanese and Spanish
- Extensive multi-media technical resources to help you
- We investigate all quality concerns to ensure our products perform to the highest standards

If the product does not perform as described on this datasheet, we will offer a refund or replacement. For full details of the Abpromise, please visit <http://www.abcam.co.jp/abpromise> or contact our technical team.

Terms and conditions

- Guarantee only valid for products bought direct from Abcam or one of our authorized distributors