

Product datasheet

Anti-Caspase-2L antibody ab18737

★☆☆☆☆ 1 Abreviews 3 References 画像数 2

製品の概要

| | |
|--------------|--|
| 製品名 | Anti-Caspase-2L antibody |
| 製品の詳細 | Rabbit polyclonal to Caspase-2L |
| 特異性 | ab18737 detects the full length and small subunit of caspase-2. In human samples it also detects a 30kDa intermediate fragment. |
| アプリケーション | 適用あり: ICC/IF, WB |
| 種交差性 | 交差種: Mouse, Rat, Human |
| 免疫原 | Synthetic peptide corresponding to Mouse Caspase-2L. Immuogen: Synthetic peptide surrounding amino acid 417 of mouse caspase-2 Database link: P42575 (Peptide available as ab38266) |
| ポジティブ・コントロール | Mouse small intestine lysate. This antibody gave a positive result in IF/ICC when used in the following formaldehyde fixed cell lines: MCF-7. |

法規制情報

医薬用外毒物

製品の特性

| | |
|--------|---|
| 製品の状態 | Liquid |
| 保存方法 | Shipped at 4°C. Store at +4°C short term (1-2 weeks). Upon delivery aliquot. Store at -20°C. Avoid freeze / thaw cycle. |
| バッファー | Preservative: 0.02% Thimerosal (merthiolate) Constituents: 50% Glycerol, 1% BSA, PBS, pH 7.2 |
| 精製度 | Protein A purified |
| ポリ/モノ | ポリクローナル |
| アイソタイプ | IgG |

アプリケーション

Our [Abpromise guarantee](#) covers the use of **ab18737** in the following tested applications.

The application notes include recommended starting dilutions; optimal dilutions/concentrations should be determined by the end user.

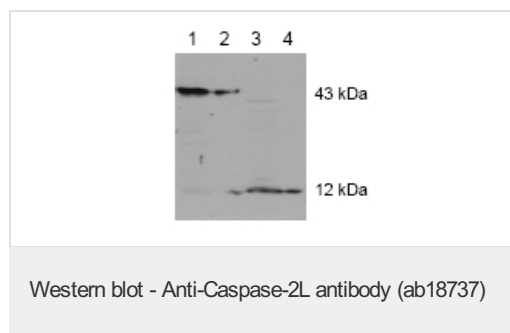
| アプリケーション | Abreviews | 特記事項 |
|----------|-----------|---|
| ICC/IF | | Use a concentration of 5 µg/ml. |
| WB | ★☆☆☆☆ | Use a concentration of 1 - 2 µg/ml. Detects a band of approximately 45 kDa (predicted molecular weight: 49 kDa). Can be blocked with Mouse Caspase-2L peptide (ab38266) . Full length protein and a smaller band of about 12 kDa (small subunit). |

ターゲット情報

関連性 Function: Involved in the activation cascade of caspases responsible for apoptosis execution. Might function by either activating some proteins required for cell death or inactivating proteins necessary for cell survival. Tissue specificity: Expressed at higher levels in the embryonic lung, liver and kidney than in the heart and brain. In adults, higher level expression is seen in the placenta, lung, kidney, and pancreas than in the heart, brain, liver and skeletal muscle. Similarity: Belongs to the peptidase C14A family. Contains 1 CARD domain. PTM: The mature protease can process its own propeptide, but not that of other caspases.

製品の状態 Specific for P42575-1; the isoform that has been chosen as the 'canonical' sequence.

画像



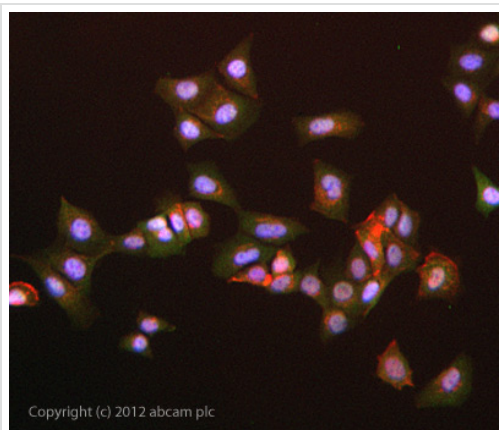
Predicted band size : 49 kDa

Observed band size : 45 kDa

Additional bands at : 12 kDa (possible cleavage fragment).

WB of Caspase-2 detected with ab18737.

Lanes 1 and 2: untreated cell lysate Lanes 3 and 4: treated cell lysate



Immunocytochemistry/ Immunofluorescence - Anti-Caspase-2L antibody (ab18737)

ICC/IF image of ab18737 stained MCF-7 cells. The cells were 4% formaldehyde fixed (10 min) and then incubated in 1%BSA / 10% normal goat serum / 0.3M glycine in 0.1% PBS-Tween for 1h to permeabilise the cells and block non-specific protein-protein interactions. The cells were then incubated with the antibody ab18737 at 5µg/ml overnight at +4°C. The secondary antibody (green) was anti-rabbit DyLight® 488 (ab96899) used at a 1:1000 dilution for 1h. Alexa Fluor® 594 WGA was used to label plasma membranes (red) at a 1:200 dilution for 1h. DAPI was used to stain the cell nuclei (blue) at a concentration of 1.43µM.

Please note: All products are "FOR RESEARCH USE ONLY AND ARE NOT INTENDED FOR DIAGNOSTIC OR THERAPEUTIC USE"

Our Abpromise to you: Quality guaranteed and expert technical support

- Replacement or refund for products not performing as stated on the datasheet
- Valid for 12 months from date of delivery
- Response to your inquiry within 24 hours
- We provide support in Chinese, English, French, German, Japanese and Spanish
- Extensive multi-media technical resources to help you
- We investigate all quality concerns to ensure our products perform to the highest standards

If the product does not perform as described on this datasheet, we will offer a refund or replacement. For full details of the Abpromise, please visit <http://www.abcam.co.jp/abpromise> or contact our technical team.

Terms and conditions

- Guarantee only valid for products bought direct from Abcam or one of our authorized distributors