

Product datasheet

Anti-Carboxypeptidase Y antibody ab34636

★★★★★ 1 Abreviews 6 References 画像数 1

製品の概要

製品名	Anti-Carboxypeptidase Y antibody
製品の詳細	Rabbit polyclonal to Carboxypeptidase Y
由来種	Rabbit
アプリケーション	適用あり: WB, Dot blot, IP, ELISA
種交差性	交差種: Saccharomyces cerevisiae
免疫原	Carboxypeptidase Y [Baker's Yeast]

製品の特性

製品の状態	Liquid
保存方法	Shipped at 4°C. Upon delivery aliquot and store at -20°C. Avoid repeated freeze / thaw cycles.
バッファー	Preservative: 0.01% Sodium Azide Constituents: 0.15M Sodium chloride, 0.02M Potassium phosphate. pH 7.2
精製度	IgG fraction
特記事項 (精製)	This product is an IgG fraction antibody purified from monospecific antiserum by a multistep process which includes delipidation, salt fractionation and ion exchange chromatography followed by extensive dialysis against the buffer.
ポリ/モノ	ポリクローナル
アイソタイプ	IgG

アプリケーション

Our [Abpromise guarantee](#) covers the use of **ab34636** in the following tested applications.

The application notes include recommended starting dilutions; optimal dilutions/concentrations should be determined by the end user.

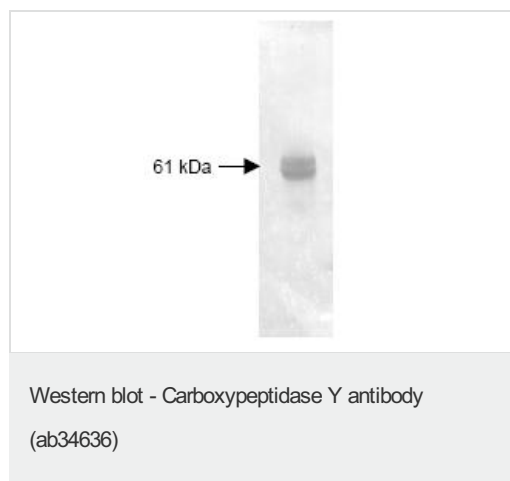
アプリケーション	Abreviews	特記事項
WB	★★★★★	Use at an assay dependent concentration. Detects a band of approximately 61 kDa (predicted molecular weight: 60 kDa).

アプリケーション	Abreviews	特記事項
Dot blot		Use at an assay dependent concentration.
IP		Use at an assay dependent concentration.
ELISA		Use at an assay dependent concentration.

ターゲット情報

機能	Involved in degradation of small peptides. Digests preferentially peptides containing an aliphatic or hydrophobic residue in P1' position, as well as methionine, leucine or phenylalanine in P1 position of ester substrate.
配列類似性	Belongs to the peptidase S10 family.
翻訳後修飾	Enters the endoplasmic reticulum as an inactive zymogen and is modified by four N-linked core oligosaccharides, giving rise to a precursor known as P1 (67 kDa). As P1 transits through the Golgi, extension of its core oligosaccharides leads to the Golgi-modified P2 precursor (69 kDa). P2 is sorted away from secretory proteins at or beyond a late Golgi compartment and is subsequently delivered to the vacuole via a prevacuolar endosome-like compartment. Upon arrival in the vacuole, the N-terminal prosegment of P2 is cleaved to yield the enzymatically active mature vacuolar form of CPY (61 kDa).
細胞内局在	Vacuole. Lysosome-like vacuoles.

画像



Anti-Carboxypeptidase Y antibody (ab34636)
at 1/5000 dilution + Cellular extracts at 10 µg

Secondary

HRP goat anti-rabbit IgG at 1/4000 dilution

Performed under reducing conditions.

Predicted band size: 60 kDa

Observed band size: 61 kDa

Please note: All products are "FOR RESEARCH USE ONLY AND ARE NOT INTENDED FOR DIAGNOSTIC OR THERAPEUTIC USE"

Our Abpromise to you: Quality guaranteed and expert technical support

- Replacement or refund for products not performing as stated on the datasheet
- Valid for 12 months from date of delivery

- Response to your inquiry within 24 hours
- We provide support in Chinese, English, French, German, Japanese and Spanish
- Extensive multi-media technical resources to help you
- We investigate all quality concerns to ensure our products perform to the highest standards

If the product does not perform as described on this datasheet, we will offer a refund or replacement. For full details of the Abpromise, please visit <http://www.abcam.co.jp/abpromise> or contact our technical team.

Terms and conditions

- Guarantee only valid for products bought direct from Abcam or one of our authorized distributors