

Product datasheet

Anti-Calmodulin 1/2/3 (phospho T79 + S81) antibody ab61001

2 References 画像数 3

製品の概要

製品名	Anti-Calmodulin 1/2/3 (phospho T79 + S81) antibody
製品の詳細	Rabbit polyclonal to Calmodulin 1/2/3 (phospho T79 + S81)
由来種	Rabbit
特異性	Detects endogenous levels of Calmodulin only when phosphorylated at threonine 79 and serine 81.
アプリケーション	適用あり: ICC/IF, ELISA, WB, IHC-P
種交差性	交差種: Human 交差が予測される動物種: Mouse, Rat ▲
免疫原	Synthetic peptide corresponding to Human Calmodulin 1/2/3. The antiserum was produced against synthesized phosphopeptide derived from human Calmodulin around the phosphorylation site of threonine 79 and serine 81 (K-D-T(p)-D-S(p)-E-E) Database link: P0DP23
ポジティブ・コントロール	IHC-P: human brain tissue. WB: extracts from Jurkat cells.

製品の特性

製品の状態	Liquid
保存方法	Shipped at 4°C. Store at +4°C short term (1-2 weeks). Upon delivery aliquot. Store at -20°C long term. Avoid freeze / thaw cycle.
バッファー	Preservative: 0.02% Sodium Azide Constituents: 50% Glycerol, PBS (without Mg ²⁺ and Ca ²⁺), 150mM Sodium chloride, pH 7.4
精製度	Immunogen affinity purified
特記事項(精製)	Affinity purified from rabbit antiserum by affinity-chromatography using epitope-specific phosphopeptide. The antibody against non-phosphopeptide was removed by chromatography using non-phosphopeptide corresponding to the phosphorylation site.
ポリモノ	ポリクローナル
アイソタイプ	IgG

アプリケーション

Our [Abpromise guarantee](#) covers the use of **ab61001** in the following tested applications.

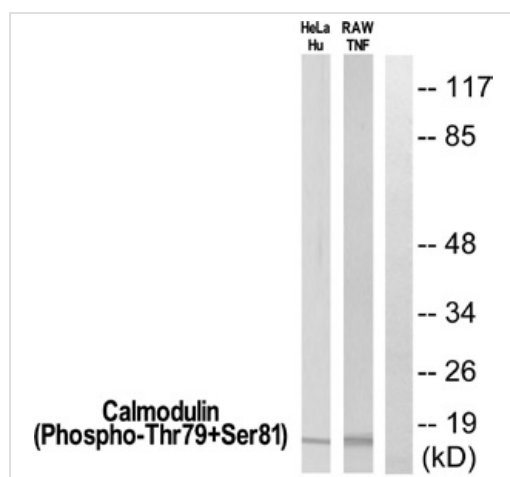
The application notes include recommended starting dilutions; optimal dilutions/concentrations should be determined by the end user.

アプリケーション	Abreviews	特記事項
ICC/IF		1/100 - 1/500.
ELISA		1/5000.
WB		1/500 - 1/1000. Detects a band of approximately 17 kDa (predicted molecular weight: 17 kDa).
IHC-P		1/50 - 1/100.

ターゲット情報

関連性	Function: Calmodulin mediates the control of a large number of enzymes and other proteins by Ca(2+). Among the enzymes to be stimulated by the calmodulin-Ca(2+) complex are a number of protein kinases and phosphatases. Together with CEP110 and centrin, is involved in a genetic pathway that regulates the centrosome cycle and progression through cytokinesis.
細胞内局在	Cytoplasm > cytoskeleton > spindle. Cytoplasm > cytoskeleton > spindle pole. Distributed throughout the cell during interphase, but during mitosis becomes dramatically localized to the spindle poles and the spindle microtubules.
製品の状態	There are three genes which encode an identical calcium binding protein which is one of the four subunits of phosphorylase kinase.

画像



All lanes : Anti-Calmodulin 1/2/3 (phospho T79 + S81) antibody (ab61001) at 1/500 dilution

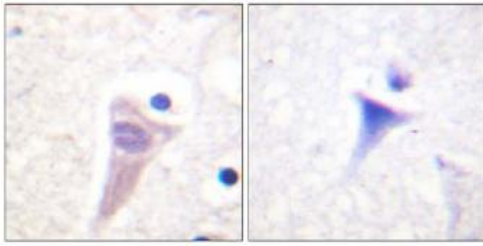
Lane 1 : HeLa cells treated with Hu (1mg/ml)

Lane 2 : Raw264.7 cells treated with TNFα (1mg/ml)

Lysates/proteins at 15 µl per lane.

Predicted band size: 17 kDa

Western blot - Anti-Calmodulin 1/2/3 (phospho T79 + S81) antibody (ab61001)



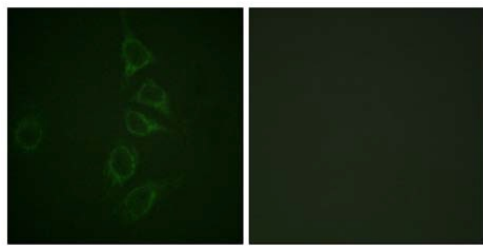
P-peptide

-

+

Immunohistochemistry (Formalin/PFA-fixed paraffin-embedded sections) - Anti-Calmodulin 1/2/3 (phospho T79 + S81) antibody (ab61001)

ab61001, at a 1/50 dilution, staining bi-phosphorylated Calmodulin on human brain tissue sections, in the presence (right) or absence (left) of the immunizing phosphopeptide.



Immunocytochemistry/ Immunofluorescence - Anti-Calmodulin 1/2/3 (phospho T79 + S81) antibody (ab61001)

Immunofluorescence analysis of HepG2 cells labeling Calmodulin (Phospho-Thr79+Ser81) with ab61001 at 1/100 dilution. The panel on the left is without the blocking peptide, while the panel on the right includes the blocking peptide.

Please note: All products are "FOR RESEARCH USE ONLY AND ARE NOT INTENDED FOR DIAGNOSTIC OR THERAPEUTIC USE"

Our Abpromise to you: Quality guaranteed and expert technical support

- Replacement or refund for products not performing as stated on the datasheet
- Valid for 12 months from date of delivery
- Response to your inquiry within 24 hours
- We provide support in Chinese, English, French, German, Japanese and Spanish
- Extensive multi-media technical resources to help you
- We investigate all quality concerns to ensure our products perform to the highest standards

If the product does not perform as described on this datasheet, we will offer a refund or replacement. For full details of the Abpromise, please visit <http://www.abcam.co.jp/abpromise> or contact our technical team.

Terms and conditions

- Guarantee only valid for products bought direct from Abcam or one of our authorized distributors