



Product datasheet

Anti-CRBN antibody ab68763

★★★★☆ 2 Abreviews 2 References 画像数 1

製品の概要

製品名	Anti-CRBN antibody
製品の詳細	Mouse polyclonal to CRBN
アプリケーション	適用あり: WB
種交差性	交差種: Human
免疫原	<p>Full length protein corresponding to Human CRBN aa 1-442. Sequence:</p> <pre>MAGEGDQQDAAHNMGNHLPLLPAESEEEDEMEVEDQDSKEAKKPNIIINFDTSLPTSHTYLGADMEEFHGRTLHDDSDCQVIPVLPQVMMILIPGQTLPLQLFHPQEVSMVRNLIQKDRTFAVLAYSINVQEREAQFGTTAEIYAYREEQDFGIEIVKVKAIQRFRKVLRLRTQSDGIQAKVQILPECVLPSTMSAVQLESLNKCQIFPSKPVSRDQCSYKWWQKYQKRKFHCANLTSWPRWLYSLYDAETLMDRIKKQLREWENLKDDSLPSNPIDFSYRVAACLPIDDVLRIQLLKIGSAIQRLRCELDIMNKCTSLCCKQCETEITTKNEIFSLSLCGPMAAYVNPHGYVHETLTVYKACNLNLIGRPSTEHSWFPGYAWTVAQCKICASHIGWKFTATKKDMSPQKFWGLTRSALLPTIPDTEDEISPDKVILCL</pre> <p>Database link: Q96SW2</p> <p style="text-align: right;">  Run BLAST with  Run BLAST with </p>
ポジティブ・コントロール	WB: CRBN transfected 293T cell lysate.

製品の特性

製品の状態	Liquid
保存方法	Shipped at 4°C. Upon delivery aliquot and store at -20°C or -80°C. Avoid repeated freeze / thaw cycles.
バッファー	pH: 7.20 Constituent: PBS
精製度	Protein A purified
ポリ/モノ	ポリクローナル
アイソタイプ	IgG

Our [Abpromise guarantee](#) covers the use of **ab68763** in the following tested applications.

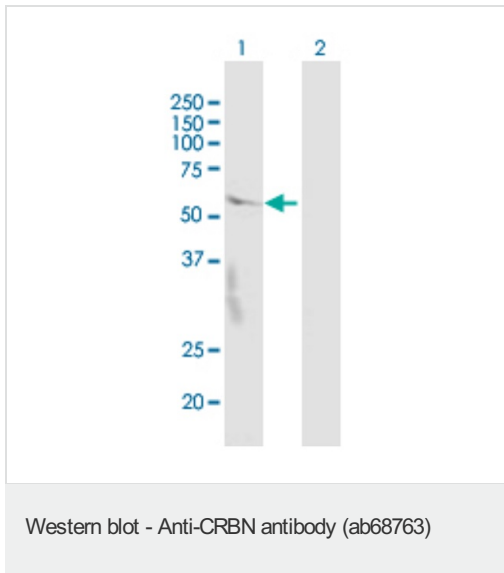
The application notes include recommended starting dilutions; optimal dilutions/concentrations should be determined by the end user.

アプリケーション	Abreviews	特記事項
WB	★★★★☆	1/500 - 1/1000. Detects a band of approximately 51 kDa (predicted molecular weight: 51 kDa). This antibody has only been tested in WB against the recombinant fragment used as immunogen. We have no data on the detection of endogenous protein.

ターゲット情報

機能	Component of some DCX (DDB1-CUL4-X-box) E3 protein ligase complex, a complex that mediates the ubiquitination and subsequent proteasomal degradation of target proteins and is required for limb outgrowth and expression of the fibroblast growth factor FGF8. In the complex, may act as a substrate receptor. Regulates the assembly and neuronal surface expression of large-conductance calcium-activated potassium channels in brain regions involved in memory and learning via its interaction with KCNT1.
組織特異性	Widely expressed. Highly expressed in brain.
パスウェイ	Protein modification; protein ubiquitination.
関連疾患	Defects in CRBN are the cause of mental retardation autosomal recessive type 2A (MRT2A) [MIM:607417]. MRT2A patients display mild mental retardation with a standard IQ ranged from 50 to 70. IQ scores are lower in males than females. Developmental milestones are mildly delayed. There are no dysmorphic or autistic features. Non-syndromic mental retardation patients do not manifest other clinical signs.
配列類似性	Belongs to the CRBN family. Contains 1 Lon domain.
翻訳後修飾	Ubiquitinated, ubiquitination is mediated by its own DCX protein ligase complex.
細胞内局在	Cytoplasm. Nucleus. Membrane.

画像



All lanes : Anti-CRBN antibody (ab68763) at 1/500 dilution

Lane 1 : CRBN transfected 293T cell lysate

Lane 2 : Non-transfected 293T cell lysate

Predicted band size : 51 kDa

This antibody has only been tested in WB against the recombinant fragment used as immunogen. We have no data on the detection of endogenous protein.

Please note: All products are "FOR RESEARCH USE ONLY AND ARE NOT INTENDED FOR DIAGNOSTIC OR THERAPEUTIC USE"

Our Abpromise to you: Quality guaranteed and expert technical support

- Replacement or refund for products not performing as stated on the datasheet
- Valid for 12 months from date of delivery
- Response to your inquiry within 24 hours
- We provide support in Chinese, English, French, German, Japanese and Spanish
- Extensive multi-media technical resources to help you
- We investigate all quality concerns to ensure our products perform to the highest standards

If the product does not perform as described on this datasheet, we will offer a refund or replacement. For full details of the Abpromise, please visit <http://www.abcam.co.jp/abpromise> or contact our technical team.

Terms and conditions

- Guarantee only valid for products bought direct from Abcam or one of our authorized distributors