


Product datasheet

Anti-COPT2 antibody ab58777

画像数 1

製品の概要

製品名	Anti-COPT2 antibody
製品の詳細	Rabbit polyclonal to COPT2
アプリケーション	適用あり: ICC/IF, WB, ELISA
種交差性	交差種: Recombinant fragment 交差が予測される動物種: Mouse, Human 
免疫原	A synthetic peptide corresponding to C-terminal residues of human COPT2

製品の特性

製品の状態	Liquid
保存方法	Shipped at 4°C. Upon delivery aliquot and store at -20°C. Avoid freeze / thaw cycles.
バッファー	Preservative: 0.01% Sodium Azide Constituents: 50% Glycerol, PBS
精製度	Immunogen affinity purified
ポリ/モノ	ポリクローナル
アイソタイプ	IgG

アプリケーション

Our [Abpromise guarantee](#) covers the use of **ab58777** in the following tested applications.

The application notes include recommended starting dilutions; optimal dilutions/concentrations should be determined by the end user.

アプリケーション	Abreviews	特記事項
ICC/IF		Use at an assay dependent dilution.
WB		Use a concentration of 1 µg/ml. Predicted molecular weight: 16 kDa. This antibody has been tested in Western blot against the recombinant peptide used as an immunogen. We have no data on detection of endogenous protein.

アプリ ケー ション	Abreviews	特記事項
------------------	-----------	------

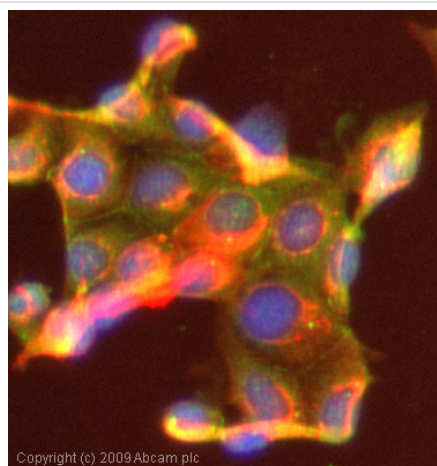
ELISA

Use at an assay dependent dilution.

ターゲット情報

機能	Involved in low-affinity copper uptake.
組織特異性	Ubiquitous.
配列類似性	Belongs to the copper transporter (Ctr) (TC 1.A.56) family. SLC31A subfamily.
細胞内局在	Membrane.

画像



Immunocytochemistry/ Immunofluorescence-COPT2 antibody(ab58777)

ICC/IF image of ab58777 stained MCF7 cells. The cells were 100% methanol fixed (5 min) and then incubated in 1%BSA / 10% normal goat serum / 0.3M glycine in 0.1% PBS-Tween for 1h to permeabilise the cells and block non-specific protein-protein interactions. The cells were then incubated with the antibody (ab58777, 1µg/ml) overnight at +4°C. The secondary antibody (green) was Alexa Fluor® 488 goat anti-rabbit IgG (H+L) used at a 1/1000 dilution for 1h. Alexa Fluor® 594 WGA was used to label plasma membranes (red) at a 1/200 dilution for 1h. DAPI was used to stain the cell nuclei (blue) at a concentration of 1.43µM.

Please note: All products are "FOR RESEARCH USE ONLY AND ARE NOT INTENDED FOR DIAGNOSTIC OR THERAPEUTIC USE"

Our Abpromise to you: Quality guaranteed and expert technical support

- Replacement or refund for products not performing as stated on the datasheet
- Valid for 12 months from date of delivery
- Response to your inquiry within 24 hours
- We provide support in Chinese, English, French, German, Japanese and Spanish
- Extensive multi-media technical resources to help you
- We investigate all quality concerns to ensure our products perform to the highest standards

If the product does not perform as described on this datasheet, we will offer a refund or replacement. For full details of the Abpromise, please visit <http://www.abcam.co.jp/abpromise> or contact our technical team.

Terms and conditions

- Guarantee only valid for products bought direct from Abcam or one of our authorized distributors