

## Product datasheet

# Anti-COMP antibody ab42225

★★★★☆ 1 Abreviews 1 References 画像数 1

### 製品の概要

製品名	Anti-COMP antibody
製品の詳細	Rabbit polyclonal to COMP
由来種	Rabbit
アプリケーション	適用あり: WB
種交差性	交差種: Mouse, Rat, Human
免疫原	Recombinant fragment (Rat) Type III repeats and C-terminal region.

### 製品の特性

製品の状態	Liquid
保存方法	Shipped at 4°C. Upon delivery aliquot and store at -20°C. Avoid freeze / thaw cycles.
バッファー	Preservative: None Constituents: Whole serum
精製度	Whole antiserum
ポリ/モノ	ポリクローナル
アイソタイプ	IgG

### アプリケーション

Our [Abpromise guarantee](#) covers the use of **ab42225** in the following tested applications.

The application notes include recommended starting dilutions; optimal dilutions/concentrations should be determined by the end user.

アプリケーション	Abreviews	特記事項
WB		1/1000. Predicted molecular weight: 84 kDa.

### ターゲット情報

機能	May play a role in the structural integrity of cartilage via its interaction with other extracellular matrix proteins such as the collagens and fibronectin. Can mediate the interaction of
----	---

chondrocytes with the cartilage extracellular matrix through interaction with cell surface integrin receptors. Could play a role in the pathogenesis of osteoarthritis. Potent suppressor of apoptosis in both primary chondrocytes and transformed cells. Suppresses apoptosis by blocking the activation of caspase-3 and by inducing the IAP family of survival proteins (BIRC3, BIRC2, BIRC5 and XIAP). Essential for maintaining a vascular smooth muscle cells (VSMCs) contractile/differentiated phenotype under physiological and pathological stimuli. Maintains this phenotype of VSMCs by interacting with ITGA7.

#### 組織特異性

Abundantly expressed in the chondrocyte extracellular matrix, and is also found in bone, tendon, ligament and synovium and blood vessels. Increased amounts are produced during late stages of osteoarthritis in the area adjacent to the main defect.

#### 関連疾患

Defects in COMP are the cause of multiple epiphyseal dysplasia type 1 (EDM1) [MIM:132400]. EDM is a generalized skeletal dysplasia associated with significant morbidity. Joint pain, joint deformity, waddling gait, and short stature are the main clinical signs and symptoms. EDM is broadly categorized into the more severe Fairbank and the milder Ribbing types. Defects in COMP are the cause of pseudoachondroplasia (PSACH) [MIM:177170]. PSACH is a dominantly inherited chondrodysplasia characterized by short stature and early-onset osteoarthritis. PSACH is more severe than EDM1 and is recognized in early childhood.

#### 配列類似性

Belongs to the thrombospondin family.  
Contains 4 EGF-like domains.  
Contains 1 TSP C-terminal (TSPC) domain.  
Contains 8 TSP type-3 repeats.

#### 発生段階

Present during the earliest stages of limb maturation and is later found in regions where the joints develop.

#### ドメイン

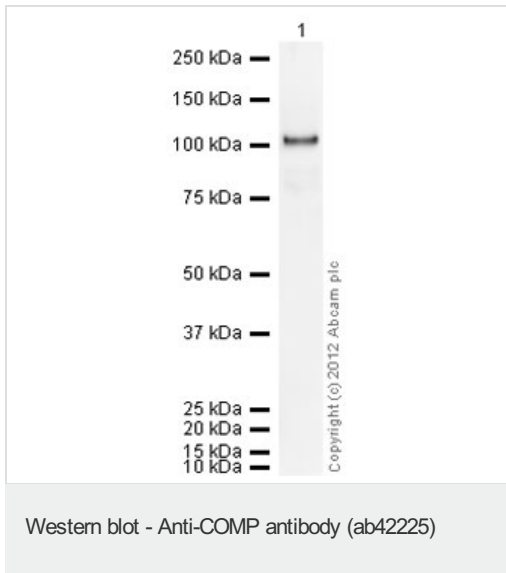
The cell attachment motif mediates the attachment to chondrocytes. It mediates the induction of both the IAP family of survival proteins and the antiapoptotic response.  
The TSP C-terminal domain mediates interaction with FN1 and ACAN.

#### 細胞内局在

Secreted > extracellular space > extracellular matrix.

---

#### 画像



Anti-COMP antibody (ab42225) at 1/1000 dilution + Recombinant Human COMP protein (ab104358) at 0.01 µg

### Secondary

Goat Anti-Rabbit IgG H&L (HRP) preadsorbed (ab97080) at 1/5000 dilution

Developed using the ECL technique.

Performed under reducing conditions.

**Predicted band size:** 84 kDa

**Exposure time:** 2 minutes

**Please note:** All products are "FOR RESEARCH USE ONLY AND ARE NOT INTENDED FOR DIAGNOSTIC OR THERAPEUTIC USE"

### Our Abpromise to you: Quality guaranteed and expert technical support

- Replacement or refund for products not performing as stated on the datasheet
- Valid for 12 months from date of delivery
- Response to your inquiry within 24 hours
- We provide support in Chinese, English, French, German, Japanese and Spanish
- Extensive multi-media technical resources to help you
- We investigate all quality concerns to ensure our products perform to the highest standards

If the product does not perform as described on this datasheet, we will offer a refund or replacement. For full details of the Abpromise, please visit <http://www.abcam.co.jp/abpromise> or contact our technical team.

### Terms and conditions

- Guarantee only valid for products bought direct from Abcam or one of our authorized distributors