

Product datasheet

Anti-COL9A3 antibody ab103810

画像数 2

製品の概要

| | |
|--------------|----------------------------------------------------------------------------------------|
| 製品名 | Anti-COL9A3 antibody |
| 製品の詳細 | Rabbit polyclonal to COL9A3 |
| 由来種 | Rabbit |
| アプリケーション | 適用あり: WB |
| 種交差性 | 交差種: Human |
| 免疫原 | Full length protein, corresponding to amino acids 1-684 of Human COL9A3 (NP_001844.3). |
| ポジティブ・コントロール | Human kidney. Transfected 293T cell line. |

製品の特性

| | |
|--------|--------------------------------------------------------------------------------------------|
| 製品の状態 | Liquid |
| 保存方法 | Shipped at 4°C. Upon delivery aliquot. Store at -20°C or -80°C. Avoid freeze / thaw cycle. |
| バッファー | Preservative: None Constituents: 1X PBS, pH 7.2 |
| 精製度 | Protein A purified |
| ポリ/モノ | ポリクローナル |
| アイソタイプ | IgG |

アプリケーション

Our [Abpromise guarantee](#) covers the use of **ab103810** in the following tested applications.

The application notes include recommended starting dilutions; optimal dilutions/concentrations should be determined by the end user.

| アプリケーション | Abreviews | 特記事項 |
|----------|-----------|-------------------------------------------------------------------------|
| WB | | Use a concentration of 1 - 5 µg/ml. Predicted molecular weight: 64 kDa. |

ターゲット情報

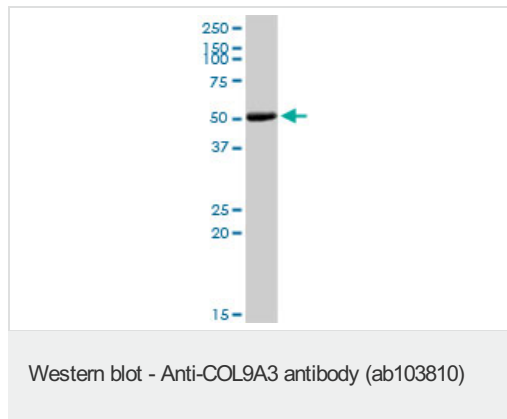
関連性 Belongs to the fibril-associated collagens with interrupted helices (FACIT) family. collagen,type

IX, alpha 3, fibril associated collagen with interrupted triple helices (FACIT), expressed in cartilage. Structural component of hyaline cartilage and vitreous of the eye. Defects in COL9A3 are the cause of multiple epiphyseal dysplasia type 3 (EDM3), also known as multiple epiphyseal dysplasia with myopathy. EDM is a generalized skeletal dysplasia associated with significant morbidity. Joint pain, joint deformity, waddling gait, and short stature are the main clinical signs and symptoms. EDM is broadly categorized into the more severe Fairbank and the milder Ribbing types.

細胞内局在

Secreted, extracellular space, extracellular matrix

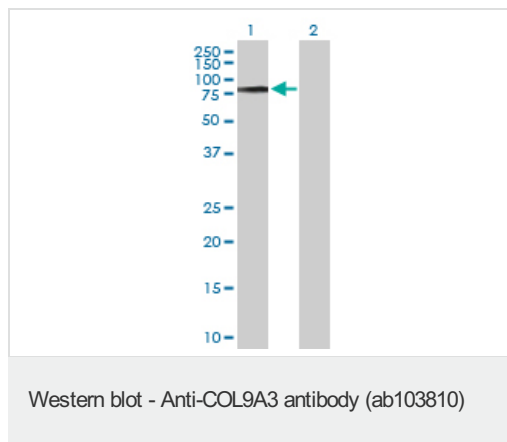
画像



Anti-COL9A3 antibody (ab103810) at 5 µg/ml

+ Human kidney tissue lysate at 50 µg

Predicted band size: 64 kDa



All lanes : Anti-COL9A3 antibody (ab103810) at 5 µg/ml

Lane 1 : COL9A3 transfected 293T cell lysate

Lane 2 : Non-transfected 293T cell lysate

Lysates/proteins at 25 µg per lane.

Predicted band size: 64 kDa

Please note: All products are "FOR RESEARCH USE ONLY AND ARE NOT INTENDED FOR DIAGNOSTIC OR THERAPEUTIC USE"

Our Promise to you: Quality guaranteed and expert technical support

- Replacement or refund for products not performing as stated on the datasheet
- Valid for 12 months from date of delivery
- Response to your inquiry within 24 hours
- We provide support in Chinese, English, French, German, Japanese and Spanish
- Extensive multi-media technical resources to help you
- We investigate all quality concerns to ensure our products perform to the highest standards

If the product does not perform as described on this datasheet, we will offer a refund or replacement. For full details of the Abpromise, please visit <http://www.abcam.co.jp/abpromise> or contact our technical team.

Terms and conditions

- Guarantee only valid for products bought direct from Abcam or one of our authorized distributors