

Product datasheet

Anti-CNTF Receptor alpha antibody ab58560

1 References [画像数 2](#)

製品の概要

製品名	Anti-CNTF Receptor alpha antibody
製品の詳細	Goat polyclonal to CNTF Receptor alpha
特異性	This antibody is expected to recognise both reported isoforms (NP_671693.1; NP_001833.1).
アプリケーション	適用あり: WB
種交差性	交差種: Mouse, Rat, Human 交差が予測される動物種: Chicken, Dog, Pufferfish, Zebrafish
免疫原	Synthetic peptide: CRSNTYPKGIFY , corresponding to internal sequence amino acids 116-126 of Human CNTF Receptor alpha Run BLAST with Run BLAST with
ポジティブ・コントロール	Mouse Brain lysate.

製品の特性

製品の状態	Liquid
保存方法	Shipped at 4°C. Upon delivery aliquot and store at -20°C. Avoid freeze / thaw cycles.
バッファー	Preservative: 0.02% Sodium Azide Constituents: 0.5% BSA, Tris saline, pH 7.3
精製度	Immunogen affinity purified
ポリ/モノ	ポリクローナル
アイソタイプ	IgG

アプリケーション

Our [Abpromise guarantee](#) covers the use of **ab58560** in the following tested applications.

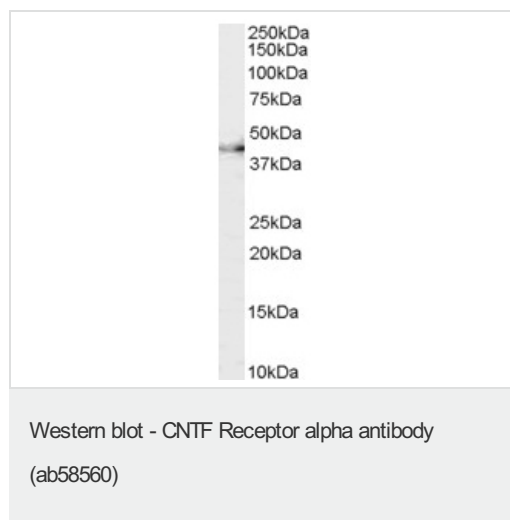
The application notes include recommended starting dilutions; optimal dilutions/concentrations should be determined by the end user.

アプリケーション	Abreviews	特記事項
WB		Use a concentration of 0.3 - 1 µg/ml. Detects a band of approximately 41 kDa (predicted molecular weight: 41 kDa).

ターゲット情報

機能	Binds to CNTF. The alpha subunit provides the receptor specificity.
組織特異性	Nervous system and skeletal muscle.
配列類似性	Belongs to the type I cytokine receptor family. Type 3 subfamily. Contains 2 fibronectin type-III domains. Contains 1 Ig-like C2-type (immunoglobulin-like) domain.
ドメイン	The WSXWS motif appears to be necessary for proper protein folding and thereby efficient intracellular transport and cell-surface receptor binding.
細胞内局在	Cell membrane.

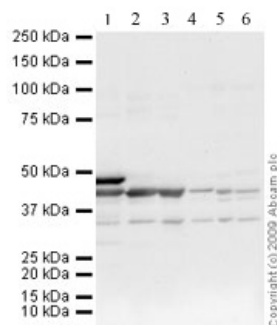
画像



Anti-CNTF Receptor alpha antibody (ab58560) at 0.3 µg/ml + Mouse Brain lysate (35µg protein in RIPA buffer)

Predicted band size : 41 kDa

Observed band size : 41 kDa



Western blot - CNTF Receptor alpha antibody (ab58560)

All lanes : Anti-CNTF Receptor alpha antibody (ab58560) at 1 µg/ml

Lane 1 : Human skeletal muscle tissue lysate - total protein (ab29330) at 20 µg

Lane 2 : Mouse skeletal muscle tissue lysate - total protein (ab29711) at 20 µg

Lane 3 : Skeletal Muscle (Rat) Tissue Lysate - normal tissue (ab29376) at 20 µg

Lane 4 : Human brain tissue lysate - total protein (ab29466) at 10 µg

Lane 5 : Brain (Mouse) Tissue Lysate (ab27253) at 10 µg

Lane 6 : Brain (Rat) Tissue Lysate (ab7942) at 10 µg

Secondary

Rabbit polyclonal to Goat IgG - H&L - Pre-Adsorbed (HRP) (ab65486) at 1/3000 dilution

Predicted band size : 41 kDa

Please note: All products are "FOR RESEARCH USE ONLY AND ARE NOT INTENDED FOR DIAGNOSTIC OR THERAPEUTIC USE"

Our Abpromise to you: Quality guaranteed and expert technical support

- Replacement or refund for products not performing as stated on the datasheet
- Valid for 12 months from date of delivery
- Response to your inquiry within 24 hours
- We provide support in Chinese, English, French, German, Japanese and Spanish
- Extensive multi-media technical resources to help you
- We investigate all quality concerns to ensure our products perform to the highest standards

If the product does not perform as described on this datasheet, we will offer a refund or replacement. For full details of the Abpromise, please visit <http://www.abcam.co.jp/abpromise> or contact our technical team.

Terms and conditions

- Guarantee only valid for products bought direct from Abcam or one of our authorized distributors