

Product datasheet

Anti-CLIP3 antibody ab74239

★★★★☆ 5 Abreviews [画像数 2](#)

製品の概要

製品名	Anti-CLIP3 antibody
製品の詳細	Rabbit polyclonal to CLIP3
由来種	Rabbit
特異性	This antibody detects endogenous levels of total CLIP3 protein.
アプリケーション	適用あり: WB, ICC/IF, ELISA
種交差性	交差種: Human 交差が予測される動物種: Mouse
免疫原	A synthesized peptide derived from the internal region of human CLIP3.
ポジティブ・コントロール	A549 cells and extracts from A549 cells.

製品の特性

製品の状態	Liquid
保存方法	Shipped at 4°C. Upon delivery aliquot and store at -20°C. Avoid freeze / thaw cycles.
バッファー	Preservative: 0.02% Sodium Azide Constituents: 50% Glycerol, PBS (without Mg ²⁺ and Ca ²⁺), 150mM Sodium chloride, pH 7.4
精製度	Immunogen affinity purified
ポリ/モノ	ポリクローナル
アイソタイプ	IgG

アプリケーション

Our [Abpromise guarantee](#) covers the use of **ab74239** in the following tested applications.

The application notes include recommended starting dilutions; optimal dilutions/concentrations should be determined by the end user.

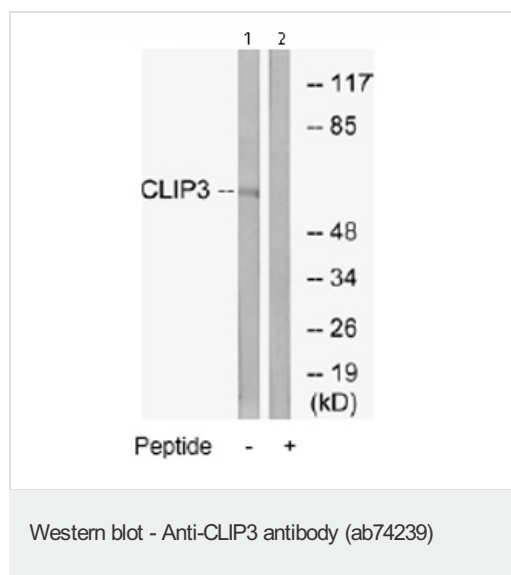
アプリケーション	Abreviews	特記事項
WB	★★★★☆	1/500 - 1/1000. Detects a band of approximately 60 kDa (predicted molecular weight: 60 kDa).
ICC/IF	★★★★☆	1/500 - 1/1000.

アプリケーション	Abreviews	特記事項
ELISA		1/40000.

ターゲット情報

機能	Functions as a cytoplasmic linker protein. Involved in TGN-endosome dynamics.
配列類似性	Contains 3 ANK repeats. Contains 2 CAP-Gly domains.
ドメイン	Microtubule association is inhibited by the ANK repeats and the Golgi localization region (GoLD).
細胞内局在	Cytoplasm. Golgi apparatus > Golgi stack. Localized to Golgi stacks as well as on tubulovesicular elements juxtaposed to Golgi cisternae.

画像



All lanes : Anti-CLIP3 antibody (ab74239) at 1/500 dilution

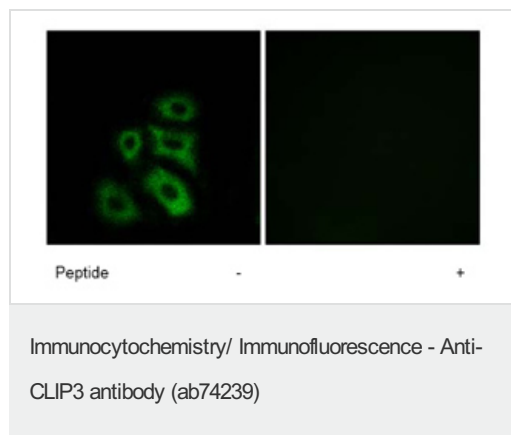
Lane 1 : Extracts from A549 cells

Lane 2 : Extracts from A549 cells plus 5µg immunizing peptide

Lysates/proteins at 5 µg per lane.

Predicted band size: 60 kDa

Observed band size: 60 kDa



Immunofluorescence analysis of A549 cells using ab74239 at a 1/500 dilution.

Left image un-treated.

Right image treated with immunizing peptide.

Please note: All products are "FOR RESEARCH USE ONLY AND ARE NOT INTENDED FOR DIAGNOSTIC OR THERAPEUTIC USE"

Our Abpromise to you: Quality guaranteed and expert technical support

- Replacement or refund for products not performing as stated on the datasheet
- Valid for 12 months from date of delivery
- Response to your inquiry within 24 hours

- We provide support in Chinese, English, French, German, Japanese and Spanish
- Extensive multi-media technical resources to help you
- We investigate all quality concerns to ensure our products perform to the highest standards

If the product does not perform as described on this datasheet, we will offer a refund or replacement. For full details of the Abpromise, please visit <http://www.abcam.co.jp/abpromise> or contact our technical team.

Terms and conditions

- Guarantee only valid for products bought direct from Abcam or one of our authorized distributors