

Product datasheet

Anti-CLEC1B antibody [17D9] ab90542

1 References [画像数 1](#)

製品の概要

製品名	Anti-CLEC1B antibody [17D9]
製品の詳細	Rat monoclonal [17D9] to CLEC1B
由来種	Rat
アプリケーション	適用あり: WB, Flow Cyt
種交差性	交差種: Mouse
免疫原	Tissue/ cell preparation (Mouse): RBL-2H3 cells stably expressing HA-tagged mouse CLEC1B.

製品の特性

製品の状態	Liquid
保存方法	Shipped at 4°C. Upon delivery aliquot and store at -20°C. Avoid repeated freeze / thaw cycles.
バッファー	Preservative: None Constituents: PBS
ポリ/モノ	モノクローナル
クローン名	17D9
ミエローマ	Y3/Ag1.2.3
アイソタイプ	IgG2b

アプリケーション

Our [Abpromise guarantee](#) covers the use of **ab90542** in the following tested applications.

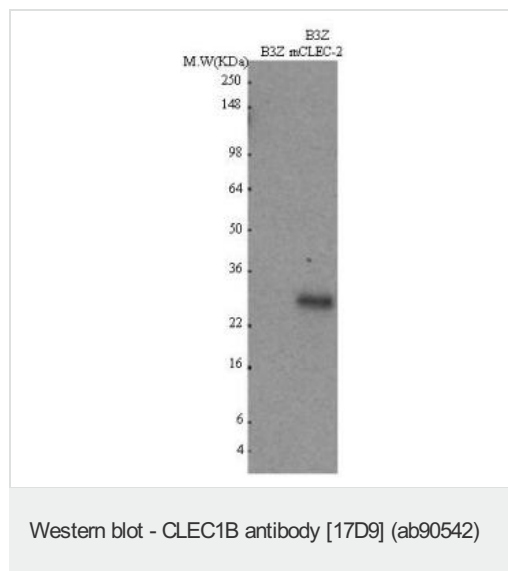
The application notes include recommended starting dilutions; optimal dilutions/concentrations should be determined by the end user.

アプリケーション	Abreviews	特記事項
WB		Use at an assay dependent concentration. Predicted molecular weight: 20 kDa.
Flow Cyt		Use at an assay dependent concentration. ab18536 - Rat monoclonal IgG2b, is suitable for use as an isotype control with this antibody.

ターゲット情報

機能	Acts as a receptor for the platelet-aggregating snake venom protein rhodocytin. Rhodocytin binding leads to tyrosine phosphorylation and this promotes the binding of spleen tyrosine kinase (Syk) and initiation of downstream tyrosine phosphorylation events and activation of PLC-gamma-2. Acts as an attachment factor for human immunodeficiency virus type 1 (HIV-1) and facilitates its capture by platelets.
組織特異性	Expressed preferentially in the liver. Also expressed in immune cells of myeloid origin and on the surface of platelets.
配列類似性	Contains 1 C-type lectin domain.
翻訳後修飾	Glycosylated. Phosphorylated on tyrosine residue in response to rhodocytin binding.
細胞内局在	Membrane.

画像



All lanes : Anti-CLEC1B antibody [17D9]
(ab90542)

Lane 1 : B3Z

Lane 2 : B3Z mCLEC1B

Predicted band size: 20 kDa

Observed band size: 25 kDa

Please note: All products are "FOR RESEARCH USE ONLY AND ARE NOT INTENDED FOR DIAGNOSTIC OR THERAPEUTIC USE"

Our Abpromise to you: Quality guaranteed and expert technical support

- Replacement or refund for products not performing as stated on the datasheet
- Valid for 12 months from date of delivery
- Response to your inquiry within 24 hours
- We provide support in Chinese, English, French, German, Japanese and Spanish
- Extensive multi-media technical resources to help you
- We investigate all quality concerns to ensure our products perform to the highest standards

If the product does not perform as described on this datasheet, we will offer a refund or replacement. For full details of the Abpromise, please visit <http://www.abcam.co.jp/abpromise> or contact our technical team.

Terms and conditions

- Guarantee only valid for products bought direct from Abcam or one of our authorized distributors