

Product datasheet

Anti-CIDE A antibody ab62343

画像数 3

製品の概要

製品名	Anti-CIDE A antibody
製品の詳細	Rabbit polyclonal to CIDE A
特異性	No cross activity to CIDE B
アプリケーション	適用あり: WB, IHC-P, ICC/IF
種交差性	交差種: Human
免疫原	Synthetic peptide: DKEERPSLRS QAKGRFT , corresponding to amino acids 200-217 of Human CIDE A Run BLAST with Run BLAST with
ポジティブ・コントロール	Brain (Human) Tissue Lysate - adult normal tissue

製品の特性

製品の状態	Liquid
保存方法	Shipped at 4°C. Store at +4°C short term (1-2 weeks). Upon delivery aliquot. Store at -20°C long term.
バッファー	Preservative: 0.02% Sodium Azide Constituents: PBS
精製度	Immunogen affinity purified
ポリ/モノ	ポリクローナル
アイソタイプ	IgG

アプリケーション

Our [Abpromise guarantee](#) covers the use of **ab62343** in the following tested applications.

The application notes include recommended starting dilutions; optimal dilutions/concentrations should be determined by the end user.

アプリケーション	Abreviews	特記事項
WB		1/1000 - 1/2000. Detects a band of approximately 23 kDa (predicted molecular weight: 25 kDa).

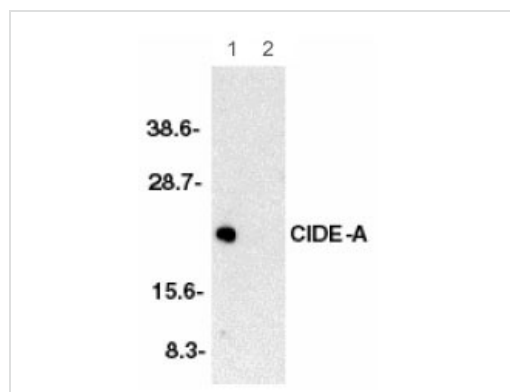
アプリケーション	Abreviews	特記事項
IHC-P		Use at an assay dependent concentration.
ICC/IF		Use a concentration of 20 µg/ml.

ターゲット情報

関連性 Apoptosis is related to many diseases and induced by a family of cell death receptors and their ligands. Cell death signals are transduced by death domain containing adapter molecules and members of the caspase family of proteases. These death signals finally cause the degradation of chromosomal DNA by activated DNase. DFF45/ICARD has been identified as inhibitor of caspase activated DNase DFF40/CAD. DFF45 related proteins CIDE A and CIDE B (for cell death inducing DFF like effector A and B) were recently identified. CIDE contains a new type of domain termed CIDE N, which has high homology with the regulatory domains of DFF45/ICAD and DFF40/CAD. Expression of CIDE A induces DNA fragmentation and activates apoptosis, which is inhibited by DFF45. CIDE A is a DFF45 inhibitable effector that promotes cell death and DNA fragmentation. CIDE A is expressed in many tissues.

細胞内局在 Nuclear. Cytoplasm; mitochondrial envelope; lipid droplet.

画像



Western blot - CIDE A antibody (ab62343)

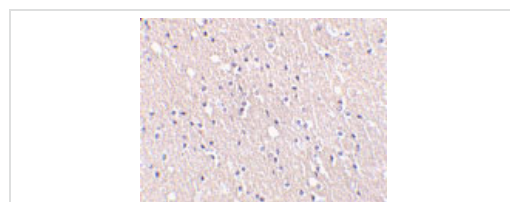
All lanes : Anti-CIDE A antibody (ab62343) at 1/2000 dilution

Lane 1 : Human brain tissue lysate in the absence of the immunizing peptide

Lane 2 : Human brain tissue lysate in the presence of the immunizing peptide

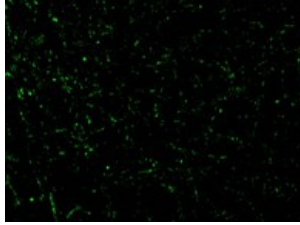
Predicted band size : 25 kDa

Observed band size : 23 kDa



Immunohistochemistry (Formalin/PFA-fixed paraffin-embedded sections) - CIDE A antibody (ab62343)

ab62343 at 5ug/ml staining human brain tissue by IHC-P.



Immunofluorescence of CIDE-A in Human
Brain cells using ab62343 at 20 ug/ml.

Immunocytochemistry/ Immunofluorescence-Anti-
CIDE A antibody(ab62343)

Please note: All products are "FOR RESEARCH USE ONLY AND ARE NOT INTENDED FOR DIAGNOSTIC OR THERAPEUTIC USE"

Our Abpromise to you: Quality guaranteed and expert technical support

- Replacement or refund for products not performing as stated on the datasheet
- Valid for 12 months from date of delivery
- Response to your inquiry within 24 hours
- We provide support in Chinese, English, French, German, Japanese and Spanish
- Extensive multi-media technical resources to help you
- We investigate all quality concerns to ensure our products perform to the highest standards

If the product does not perform as described on this datasheet, we will offer a refund or replacement. For full details of the Abpromise, please visit <http://www.abcam.co.jp/abpromise> or contact our technical team.

Terms and conditions

- Guarantee only valid for products bought direct from Abcam or one of our authorized distributors