

Product datasheet

Anti-CHPT1 antibody ab107425

画像数 1

製品の概要

製品名	Anti-CHPT1 antibody
製品の詳細	Rabbit polyclonal to CHPT1
由来種	Rabbit
アプリケーション	適用あり: WB
種交差性	交差種: Human
免疫原	Synthetic peptide conjugated to KLH, between amino acids 14-41 from the N-terminal region of Human CHPT1 (NP_064629.2).
ポジティブ・コントロール	HepG2 cell lysate

製品の特性

製品の状態	Liquid
保存方法	Shipped at 4°C. Store at 4°C (up to 6 months). Store at -20°C long term.
バッファー	Preservative: 0.09% Sodium Azide Constituents: PBS
精製度	Immunogen affinity purified
特記事項(精製)	ab107425 is purified through a protein A column, followed by peptide affinity purification.
ポリ/モノ	ポリクローナル
アイソタイプ	IgG

アプリケーション

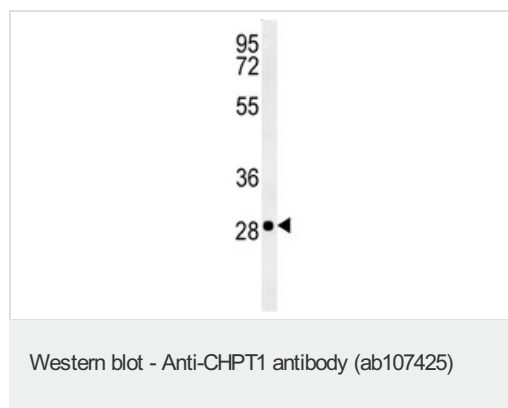
Our [Abpromise guarantee](#) covers the use of **ab107425** in the following tested applications.

The application notes include recommended starting dilutions; optimal dilutions/concentrations should be determined by the end user.

アプリケーション	Abreviews	特記事項
WB		1/100 - 1/500. Predicted molecular weight: 45 kDa.

<b>機能</b>	Catalyzes phosphatidylcholine biosynthesis from CDP-choline. It thereby plays a central role in the formation and maintenance of vesicular membranes.
<b>組織特異性</b>	Highly expressed in testis, colon, small intestine, heart, prostate and spleen. Also detected in kidney, skeletal muscle, pancreas, leukocytes, ovary and thymus. Weakly expressed in the brain, placenta and lung. Overexpressed in cancerous breast epithelial cell lines.
<b>パスウェイ</b>	Phospholipid metabolism; phosphatidylcholine biosynthesis; phosphatidylcholine from phosphocholine: step 2/2.
<b>配列類似性</b>	Belongs to the CDP-alcohol phosphatidyltransferase class-I family.
<b>細胞内局在</b>	Golgi apparatus membrane.

## 画像



Anti-CHPT1 antibody (ab107425) at 1/100 dilution + HepG2 cell lysate at 35 µg

**Predicted band size:** 45 kDa

**Please note:** All products are "FOR RESEARCH USE ONLY AND ARE NOT INTENDED FOR DIAGNOSTIC OR THERAPEUTIC USE"

## Our Abpromise to you: Quality guaranteed and expert technical support

- Replacement or refund for products not performing as stated on the datasheet
- Valid for 12 months from date of delivery
- Response to your inquiry within 24 hours
- We provide support in Chinese, English, French, German, Japanese and Spanish
- Extensive multi-media technical resources to help you
- We investigate all quality concerns to ensure our products perform to the highest standards

If the product does not perform as described on this datasheet, we will offer a refund or replacement. For full details of the Abpromise, please visit <http://www.abcam.co.jp/abpromise> or contact our technical team.

## Terms and conditions

- Guarantee only valid for products bought direct from Abcam or one of our authorized distributors