


Product datasheet

Anti-CHMP6 antibody ab76929

1 Abreviews 画像数 1

製品の概要

製品名	Anti-CHMP6 antibody
製品の詳細	Rabbit polyclonal to CHMP6
由来種	Rabbit
アプリケーション	適用あり: WB
種交差性	交差種: Human 交差が予測される動物種: Cow, Orangutan 
免疫原	Synthetic peptide conjugated to KLH derived from within residues 1 - 100 of Human CHMP6.Immunogenの所有権に関して(Peptide available as ab90851 .)
ポジティブ・コントロール	This antibody gave a positive signal in the following whole cell lysates: Hela; Jurkat; HepG2; HEK293; MCF7; JEG3; K562.

製品の特性

製品の状態	Liquid
保存方法	Shipped at 4°C. Store at +4°C short term (1-2 weeks). Upon delivery aliquot. Store at -20°C or -80°C. Avoid freeze / thaw cycle.
バッファー	Preservative: 0.02% Sodium Azide Constituents: 1% BSA, PBS, pH 7.4
精製度	Immunogen affinity purified
ポリ/モノ	ポリクローナル
アイソタイプ	IgG

アプリケーション

Our [Abpromise guarantee](#) covers the use of **ab76929** in the following tested applications.

The application notes include recommended starting dilutions; optimal dilutions/concentrations should be determined by the end user.

アプリケーション	Abreviews	特記事項

アプリケーション	Abreviews	特記事項
WB		Use a concentration of 1 µg/ml. Detects a band of approximately 50 kDa (predicted molecular weight: 23 kDa).

ターゲット情報

機能

Probable core component of the endosomal sorting required for transport complex III (ESCRT-III) which is involved in multivesicular bodies (MVBs) formation and sorting of endosomal cargo proteins into MVBs. MVBs contain intraluminal vesicles (ILVs) that are generated by invagination and scission from the limiting membrane of the endosome and mostly are delivered to lysosomes enabling degradation of membrane proteins, such as stimulated growth factor receptors, lysosomal enzymes and lipids. The MVB pathway appears to require the sequential function of ESCRT-O, -I, -II and -III complexes. ESCRT-III proteins mostly dissociate from the invaginating membrane before the ILV is released. The ESCRT machinery also functions in topologically equivalent membrane fission events, such as the terminal stages of cytokinesis and the budding of enveloped viruses (HIV-1 and other lentiviruses). ESCRT-III proteins are believed to mediate the necessary vesicle extrusion and/or membrane fission activities, possibly in conjunction with the AAA ATPase VPS4. In the ESCRT-III complex, it probably serves as an acceptor for the ESCRT-II complex on endosomal membranes.

組織特異性

Ubiquitously expressed.

配列類似性

Belongs to the SNF7 family.

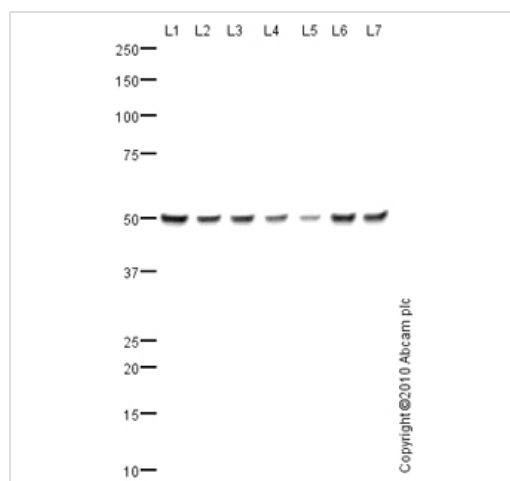
ドメイン

The acidic C-terminus and the basic N-terminus are thought to render the protein in a closed, soluble and inactive conformation through an autoinhibitory intramolecular interaction. The open and active conformation, which enables membrane binding and oligomerization, is achieved by interaction with other cellular binding partners, probably including other ESCRT components.

細胞内局在

Endomembrane system. Endosome membrane. Late endosome membrane. Localizes to endosomal membranes.

画像



Western blot - Anti-CHMP6 antibody (ab76929)

All lanes : Anti-CHMP6 antibody (ab76929)
at 1 µg/ml

Lane 1 : HeLa (Human epithelial carcinoma cell line) Whole Cell Lysate

Lane 2 : Jurkat (Human T cell lymphoblast-like cell line) Whole Cell Lysate

Lane 3 : HepG2 (Human hepatocellular liver carcinoma cell line) Whole Cell Lysate

Lane 4 : HEK293 (Human embryonic kidney cell line) Whole Cell Lysate

Lane 5 : MCF7 (Human breast adenocarcinoma cell line) Whole Cell Lysate

Lane 6 : JEG-3 (Human placental choriocarcinoma cell line) Whole Cell Lysate

Lane 7 : K562 (Human erythromyeloblastoid leukemia cell line) Whole Cell Lysate

Lysates/proteins at 10 µg per lane.

Secondary

All lanes : Goat polyclonal to Rabbit IgG - H&L - Pre-Adsorbed (HRP) at 1/3000 dilution

Developed using the ECL technique.

Performed under reducing conditions.

Predicted band size: 23 kDa

Observed band size: 50 kDa

Exposure time: 30 seconds

This protein contains a N-myristoyl glycine amino acid modification that we believe might be responsible for the size shift observed. Furthermore, the 50 kDa band observed is comparable to the molecular weight shown in scientific literature and obtained with other commercially available antibodies to CHMP6. Abcam would love to hear from anyone that can help explain the results obtained.

Please note: All products are "FOR RESEARCH USE ONLY AND ARE NOT INTENDED FOR DIAGNOSTIC OR THERAPEUTIC USE"

Our Abpromise to you: Quality guaranteed and expert technical support

- Replacement or refund for products not performing as stated on the datasheet
- Valid for 12 months from date of delivery
- Response to your inquiry within 24 hours

- We provide support in Chinese, English, French, German, Japanese and Spanish
- Extensive multi-media technical resources to help you
- We investigate all quality concerns to ensure our products perform to the highest standards

If the product does not perform as described on this datasheet, we will offer a refund or replacement. For full details of the Abpromise, please visit <http://www.abcam.co.jp/abpromise> or contact our technical team.

Terms and conditions

- Guarantee only valid for products bought direct from Abcam or one of our authorized distributors