

Product datasheet

Anti-CHL1 antibody ab93197

画像数 1

製品の概要

製品名	Anti-CHL1 antibody
製品の詳細	Rabbit polyclonal to CHL1
由来種	Rabbit
アプリケーション	適用あり: WB
種交差性	交差種: Mouse
免疫原	Synthetic peptide conjugated to KLH derived from within residues 450 - 550 of Mouse CHL1.Immunogenの所有権に関して
ポジティブ・コントロール	This antibody gave a positive signal in the following mouse tissue lysates: Cerebellum; Spinal Cord; Retina; Optic Nerve.

製品の特性

製品の状態	Liquid
保存方法	Shipped at 4°C. Store at +4°C short term (1-2 weeks). Upon delivery aliquot. Store at -20°C or -80°C. Avoid freeze / thaw cycle.
バッファー	Preservative: 0.02% Sodium Azide Constituents: 1% BSA, PBS, pH 7.4
精製度	Immunogen affinity purified
ポリモノ	ポリクローナル
アイソタイプ	IgG

アプリケーション

Our [Abpromise guarantee](#) covers the use of **ab93197** in the following tested applications.

The application notes include recommended starting dilutions; optimal dilutions/concentrations should be determined by the end user.

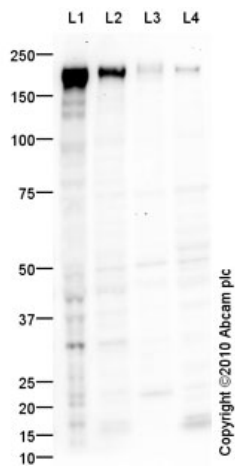
アプリケーション	Abreviews	特記事項
WB		Use a concentration of 1 µg/ml. Detects a band of approximately 220 kDa (predicted molecular weight: 135 kDa).

ターゲット情報

関連性 CHL1 is an extracellular matrix and cell adhesion protein that plays a role in nervous system development and in synaptic plasticity. Both soluble and membranous forms promote neurite outgrowth of cerebellar and hippocampal neurons and suppress neuronal cell death. CHL1 plays a role in neuronal positioning of pyramidal neurons and in regulation of both the number of interneurons and the efficacy of GABAergic synapses. CHL1 may play a role in regulating cell migration in nerve regeneration and cortical development. Potentiates integrin-dependent cell migration towards extracellular matrix proteins and recruits ANK3 to the plasma membrane.

細胞内局在 Cell Membrane and Secreted

画像



Western blot - Anti-CHL1 antibody (ab93197)

All lanes : Anti-CHL1 antibody (ab93197) at 1 µg/ml

Lane 1 : Cerebellum (Mouse) Tissue Lysate

Lane 2 : Spinal Cord (Mouse) Tissue Lysate

Lane 3 : Retina (Mouse) Tissue Lysate

Lane 4 : Optic Nerve (Mouse) Tissue Lysate

Lysates/proteins at 10 µg per lane.

Secondary

All lanes : Goat Anti-Rabbit IgG H&L (HRP) preadsorbed (ab97080) at 1/5000 dilution

Developed using the ECL technique.

Performed under reducing conditions.

Predicted band size: 135 kDa

Observed band size: 220 kDa

Additional bands at: 125 kDa, 140 kDa. We are unsure as to the identity of these extra bands.

Exposure time: 20 minutes

CHL1 contains a number of potential glycosylation sites (SwissProt) which may explain its migration at a higher molecular weight than predicted.

Please note: All products are "FOR RESEARCH USE ONLY AND ARE NOT INTENDED FOR DIAGNOSTIC OR THERAPEUTIC USE"

Our Promise to you: Quality guaranteed and expert technical support

- Replacement or refund for products not performing as stated on the datasheet
- Valid for 12 months from date of delivery
- Response to your inquiry within 24 hours
- We provide support in Chinese, English, French, German, Japanese and Spanish
- Extensive multi-media technical resources to help you
- We investigate all quality concerns to ensure our products perform to the highest standards

If the product does not perform as described on this datasheet, we will offer a refund or replacement. For full details of the Abpromise, please visit <http://www.abcam.co.jp/abpromise> or contact our technical team.

Terms and conditions

- Guarantee only valid for products bought direct from Abcam or one of our authorized distributors