

Product datasheet

Anti-CHD3 antibody [EPNCIR110A] ab109195

KO 評価済 リコンビナント RabMAb

画像数 6

製品の概要

| | |
|--------------|---|
| 製品名 | Anti-CHD3 antibody [EPNCIR110A] |
| 製品の詳細 | Rabbit monoclonal [EPNCIR110A] to CHD3 |
| 由来種 | Rabbit |
| アプリケーション | 適用あり: Flow Cyt, WB, IHC-P, ICC/IF 適用なし: IP |
| 種交差性 | 交差種: Mouse, Rat, Human |
| 免疫原 | Synthetic peptide within Mouse CHD3 aa 1-100. The exact sequence is proprietary. Database link: B1AR17 |
| ポジティブ・コントロール | K562, HeLa, C6, and PC12 cell lysates, Human breast and Human ovary tissues; HeLa cells |
| 特記事項 | This antibody was developed as part of a collaboration between Epitomics, the National Cancer Institute's Center for Cancer Research and the lab of Gordon Hager. View antibodies from NCI Center for Cancer Research Collaboration |

Our RabMAb[®] technology is a patented hybridoma-based technology for making rabbit monoclonal antibodies. For details on our patents, please refer to [RabMAb[®] patents](#)

We are constantly working hard to ensure we provide our customers with best in class antibodies. As a result of this work we are pleased to now offer this antibody in purified format. We are in the process of updating our datasheets. The purified format is designated 'PUR' on our product labels. If you have any questions regarding this update, please contact our Scientific Support team.

This product is a recombinant rabbit monoclonal antibody.

製品の特性

| | |
|-------|--|
| 製品の状態 | Liquid |
| 保存方法 | Shipped at 4°C. Store at -20°C. Stable for 12 months at -20°C. |
| バッファー | PBS 49%, Sodium azide 0.01%, Glycerol 50%, BSA 0.05% |
| 精製度 | Protein A purified |
| ポリ/モノ | モノクローナル |

| | |
|--------|------------|
| クローン名 | EPNCIR110A |
| アイソタイプ | IgG |

アプリケーション

Our [Abpromise guarantee](#) covers the use of **ab109195** in the following tested applications.

The application notes include recommended starting dilutions; optimal dilutions/concentrations should be determined by the end user.

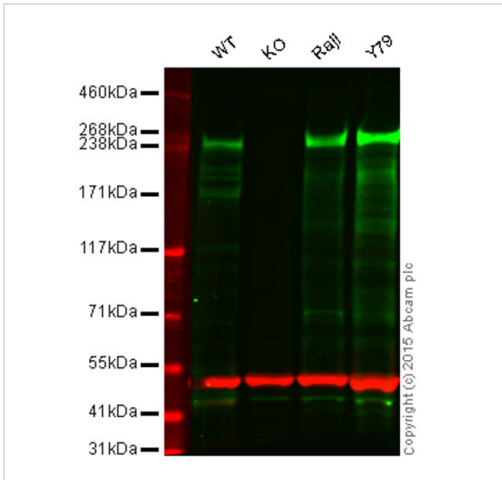
| アプリケーション | Abreviews | 特記事項 |
|----------|-----------|--|
| Flow Cyt | | Use at an assay dependent concentration. |
| WB | | 1/1000 - 1/10000. Detects a band of approximately 260 kDa (predicted molecular weight: 227 kDa). |
| IHC-P | | 1/100 - 1/250. Perform heat mediated antigen retrieval before commencing with IHC staining protocol. (Heat to 98°C, allow to cool for 10-20 minutes) |
| ICC/IF | | 1/100 - 1/250. |

追加情報 Is unsuitable for IP.

ターゲット情報

| | |
|--------------|--|
| 機能 | Component of the histone deacetylase NuRD complex which participates in the remodeling of chromatin by deacetylating histones. Required for anchoring centrosomal pericentrin in both interphase and mitosis, for spindle organization and centrosome integrity. |
| 組織特異性 | Widely expressed. |
| 配列類似性 | Belongs to the SNF2/RAD54 helicase family. Contains 2 chromo domains. Contains 1 helicase ATP-binding domain. Contains 1 helicase C-terminal domain. Contains 2 PHD-type zinc fingers. |
| 細胞内局在 | Nucleus. Cytoplasm > cytoskeleton > centrosome. Associates with centrosomes in interphase and mitosis. |

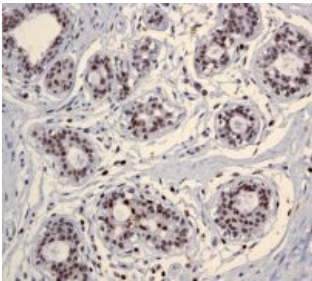
画像



Western blot - Anti-CHD3 antibody [EPNCIR110A]
(ab109195)

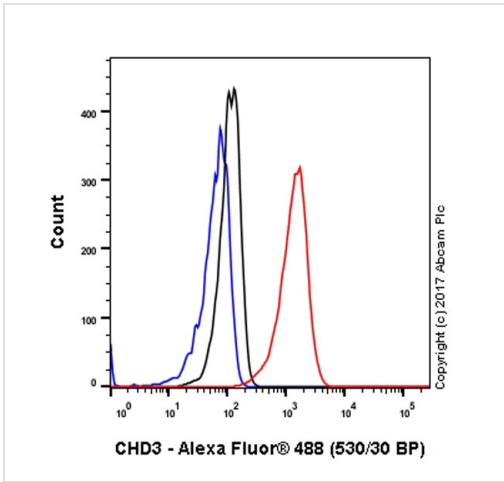
Lane 1: Wild-type HAP1 cell lysate (20 μ g)
Lane 2: CHD3 knockout HAP1 cell lysate (20 μ g)
Lane 3: Raji cell lysate (20 μ g)
Lane 4: Y79 cell lysate (20 μ g)
Lanes 1 - 4: Merged signal (red and green).
 Green - ab109195 observed at 245 kDa. Red - loading control, ab8245, observed at 37 kDa.

ab109195 was shown to specifically react with CHD3 when CHD3 knockout samples were used. Wild-type and CHD3 knockout samples were subjected to SDS-PAGE. ab109195 and ab8245 (loading control to GAPDH) were diluted 1/1000 and 1/2000 and incubated overnight at 4°C. Blots were developed with Goat anti-Rabbit IgG H&L (IRDye[®] 800CW) preadsorbed (ab216773) and Goat anti-Mouse IgG H&L (IRDye[®] 680RD) preadsorbed (ab216776) secondary antibodies at 1/10000 dilution for 1 h at room temperature before imaging.



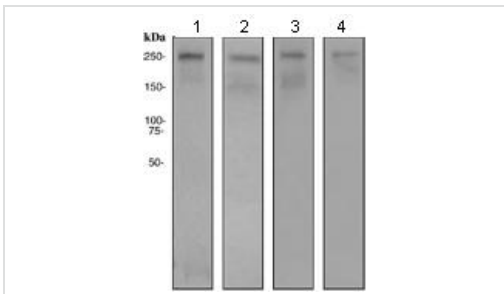
Immunohistochemistry (Formalin/PFA-fixed paraffin-embedded sections) - Anti-CHD3 antibody [EPNCIR110A] (ab109195)

Immunohistochemical staining of paraffin-embedded Human breast tissue using ab109195 at a dilution of 1/100.



Flow Cytometry - Anti-CHD3 antibody
[EPNCIR110A] (ab109195)

Flow Cytometry analysis of HeLa (human cervix adenocarcinoma) cells labeling CHD3 with purified ab109195 at 1/230 dilution (10ug/ml) (red). Cells were fixed with 4% paraformaldehyde and permeabilised with 90% methanol. A Goat anti rabbit IgG (Alexa Fluor® 488) (ab150077)(1/2000 dilution) was used as the secondary antibody. Rabbit monoclonal IgG (Black)(ab172730) was used as the isotype control, cells without incubation with primary antibody and secondary antibody (Blue) were used as the unlabeled control.



Western blot - Anti-CHD3 antibody [EPNCIR110A]
(ab109195)

All lanes : Anti-CHD3 antibody
[EPNCIR110A] (ab109195) at 1/1000 dilution

Lane 1 : K562 cell lysate

Lane 2 : HeLa cell lysate

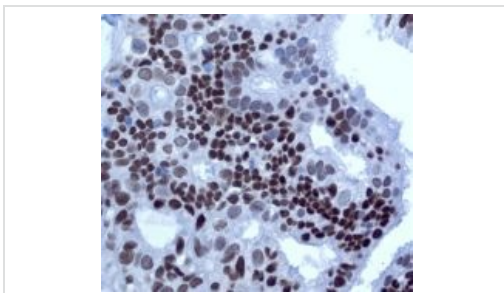
Lane 3 : C6 cell lysate

Lane 4 : PC12 cell lysate

Lysates/proteins at 10 µg per lane.

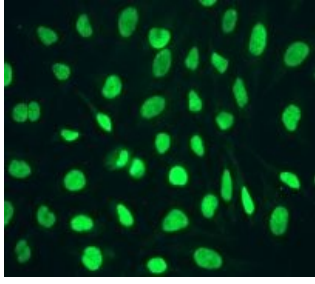
Predicted band size: 227 kDa

Observed band size: 260 kDa



Immunohistochemistry (Formalin/PFA-fixed paraffin-embedded sections) - Anti-CHD3 antibody
[EPNCIR110A] (ab109195)

Immunohistochemical staining of paraffin-embedded Human ovary tissue using ab109195 at a dilution of 1/100.



Immunofluorescent staining of HeLa cells
using ab109195 at a dilution of 1/100.

Immunocytochemistry/ Immunofluorescence - Anti-
CHD3 antibody [EPNCIR110A] (ab109195)

Please note: All products are "FOR RESEARCH USE ONLY AND ARE NOT INTENDED FOR DIAGNOSTIC OR THERAPEUTIC USE"

Our Abpromise to you: Quality guaranteed and expert technical support

- Replacement or refund for products not performing as stated on the datasheet
- Valid for 12 months from date of delivery
- Response to your inquiry within 24 hours
- We provide support in Chinese, English, French, German, Japanese and Spanish
- Extensive multi-media technical resources to help you
- We investigate all quality concerns to ensure our products perform to the highest standards

If the product does not perform as described on this datasheet, we will offer a refund or replacement. For full details of the Abpromise, please visit <http://www.abcam.co.jp/abpromise> or contact our technical team.

Terms and conditions

- Guarantee only valid for products bought direct from Abcam or one of our authorized distributors