

Product datasheet

Anti-CD43 antibody [MEM-59] (FITC) ab21853

1 Abreviews 2 References 画像数 2

製品の概要

製品名	Anti-CD43 antibody [MEM-59] (FITC)
製品の詳細	Mouse monoclonal [MEM-59] to CD43 (FITC)
標識	FITC. Ex: 493nm, Em: 528nm
アプリケーション	適用あり: Flow Cyt
種交差性	交差種: Mouse, Human
免疫原	Tissue/ cell preparation (T lymphocytes) (Human).
特記事項	The purified antibody is conjugated with Fluorescein isothiocyanate (FITC) under optimum conditions. The reagent is free of unconjugated FITC and adjusted for direct use.

製品の特性

製品の状態	Liquid
保存方法	Shipped at 4°C. Store at +4°C.
バッファー	Preservative: 15mM Sodium Azide Constituents: PBS, BSA. pH 7.4
精製度	Protein G purified
ポリ/モノ	モノクローナル
クローン名	MEM-59
アイソタイプ	IgG1

アプリケーション

Our [Abpromise guarantee](#) covers the use of **ab21853** in the following tested applications.

The application notes include recommended starting dilutions; optimal dilutions/concentrations should be determined by the end user.

アプリケーション	Abreviews	特記事項
Flow Cyt		Use 1µl for 10 ⁶ cells. ab91356 -Mouse monoclonal IgG1, is suitable for use as an isotype control with this antibody.

ターゲット情報

機能

One of the major glycoproteins of thymocytes and T lymphocytes. Plays a role in the physicochemical properties of the T-cell surface and in lectin binding. Presents carbohydrate ligands to selectins. Has an extended rodlike structure that could protrude above the glycocalyx of the cell and allow multiple glycan chains to be accessible for binding. Is a counter receptor for SN/Siglec-1 (By similarity). During T-cell activation is actively removed from the T-cell-APC (antigen-presenting cell) contact site thus suggesting a negative regulatory role in adaptive immune response.

組織特異性

Cell surface of thymocytes, T-lymphocytes, neutrophils, plasma cells and myelomas.

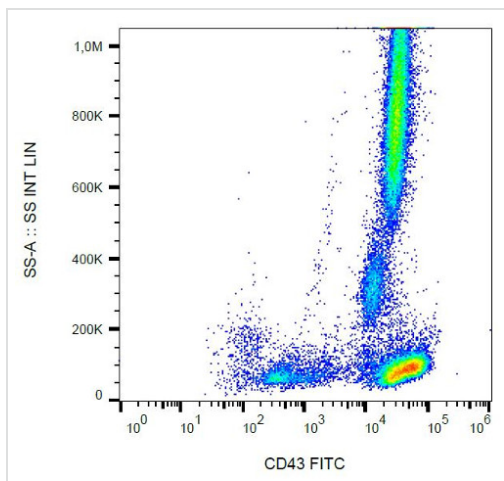
翻訳後修飾

Glycosylated; has a high content of sialic acid and O-linked carbohydrate structures.

細胞内局在

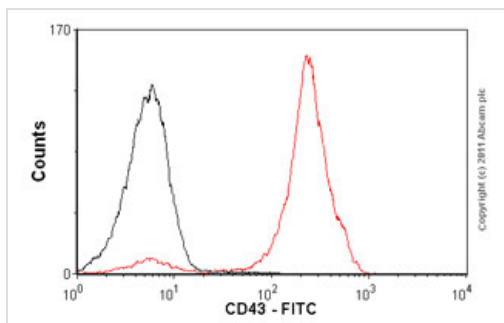
Membrane.

画像



Flow Cytometry - Anti-CD43 antibody [MEM-59]
(FITC) (ab21853)

Flow Cytometry analysis of human peripheral blood cells labeling CD43 with Anti-CD43 antibody [MEM-59] (FITC) (ab21853).



Flow Cytometry-Anti-CD43 antibody [MEM-59]
(FITC)(ab21853)

Overlay histogram showing peripheral blood lymphocytes stained with ab21853 (red line). The cells incubated in 1x PBS / 10% normal goat serum / 0.3M glycine to block non-specific protein-protein interactions. The cells were then incubated with the antibody (ab21853, 0.5 $\mu\text{g}/1 \times 10^6$ cells) for 30 min at 22°C. Isotype control antibody (black line) was mouse IgG1 FITC (2 $\mu\text{g}/1 \times 10^6$ cells) for 30 min at 22°C. Acquisition of >5,000 events was performed.

Our Abpromise to you: Quality guaranteed and expert technical support

- Replacement or refund for products not performing as stated on the datasheet
- Valid for 12 months from date of delivery
- Response to your inquiry within 24 hours

- We provide support in Chinese, English, French, German, Japanese and Spanish
- Extensive multi-media technical resources to help you
- We investigate all quality concerns to ensure our products perform to the highest standards

If the product does not perform as described on this datasheet, we will offer a refund or replacement. For full details of the Abpromise, please visit <http://www.abcam.co.jp/abpromise> or contact our technical team.

Terms and conditions

- Guarantee only valid for products bought direct from Abcam or one of our authorized distributors