

## Product datasheet

# Anti-CD16 antibody [3G8] ab117271

### 画像数 1

#### 製品の概要

製品名	Anti-CD16 antibody [3G8]
製品の詳細	Mouse monoclonal [3G8] to CD16
由来種	Mouse
アプリケーション	<b>適用あり:</b> Flow Cyt
種交差性	<b>交差種:</b> Human, Non human primates
ポジティブ・コントロール	Normal peripheral blood.

#### 製品の特性

製品の状態	Liquid
保存方法	Shipped at 4°C. Store at +4°C short term (1-2 weeks). Store at -20°C or -80°C. Avoid freeze / thaw cycle.
バッファー	pH: 7.40 Preservative: 0.09% Sodium azide Constituent: PBS
精製度	Protein G purified
ポリ/モノ	モノクローナル
クローン名	3G8
アイソタイプ	IgG1

#### アプリケーション

Our [Abpromise guarantee](#) covers the use of **ab117271** in the following tested applications.

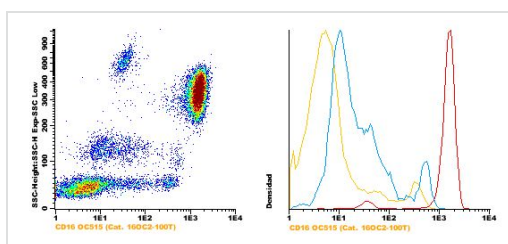
The application notes include recommended starting dilutions; optimal dilutions/concentrations should be determined by the end user.

アプリケーション	Abreviews	特記事項
Flow Cyt		Use 5µl for 10 <sup>6</sup> cells. <a href="#">ab170190</a> - Mouse monoclonal IgG1, is suitable for use as an isotype control with this antibody.

## ターゲット情報

機能	Receptor for the Fc region of IgG. Binds complexed or aggregated IgG and also monomeric IgG. Mediates antibody-dependent cellular cytotoxicity (ADCC) and other antibody-dependent responses, such as phagocytosis.
組織特異性	Expressed on natural killer cells, macrophages, subpopulation of T-cells, immature thymocytes and placental trophoblasts.
配列類似性	Contains 2 Ig-like C2-type (immunoglobulin-like) domains.
翻訳後修飾	Glycosylated. Contains high mannose- and complex-type oligosaccharides. The soluble form is produced by a proteolytic cleavage.
細胞内局在	Cell membrane. Secreted. Exists also as a soluble receptor.

## 画像



Flow Cytometry - Anti-CD16 antibody [3G8]  
(ab117271)

Flow cytometry data on peripheral blood (healthy individual) stained with the ab117271 at  $20\mu\text{l}/10^6$  cells. The reagent allows to identify the NK cell subset CD16+ with low SSC, and DC cells CD16+. Red histogram represents Granulocyte cells, blue histogram represents Dendritic and Monocyte cells and yellow histogram represents lymphocytic cells and NK cells.

**Please note:** All products are "FOR RESEARCH USE ONLY AND ARE NOT INTENDED FOR DIAGNOSTIC OR THERAPEUTIC USE"

## Our Abpromise to you: Quality guaranteed and expert technical support

- Replacement or refund for products not performing as stated on the datasheet
- Valid for 12 months from date of delivery
- Response to your inquiry within 24 hours
- We provide support in Chinese, English, French, German, Japanese and Spanish
- Extensive multi-media technical resources to help you
- We investigate all quality concerns to ensure our products perform to the highest standards

If the product does not perform as described on this datasheet, we will offer a refund or replacement. For full details of the Abpromise, please visit <http://www.abcam.co.jp/abpromise> or contact our technical team.

## Terms and conditions

- Guarantee only valid for products bought direct from Abcam or one of our authorized distributors