

Product datasheet

Anti-CCR8 antibody ab63772

1 Abreviews [画像数 2](#)

製品の概要

製品名	Anti-CCR8 antibody
製品の詳細	Rabbit polyclonal to CCR8
由来種	Rabbit
アプリケーション	適用あり: WB
種交差性	交差種: Mouse, Rat, Human
免疫原	Synthetic peptide conjugated to KLH derived from within residues 1 - 100 of Mouse CCR8.Immunogenの所有権に関して(Peptide available as ab66424 .)
ポジティブ・コントロール	This antibody gave a positive signal in the following lysates: SK N SH Whole Cell, A498 Whole Cell, HCT 116 Whole Cell, Mouse Spinal Cord Tissue, Mouse Thymus Tissue, Rat Thymus Tissue, Mouse Spleen Tissue, Rat Spleen Tissue and MEF1 Whole Cell

製品の特性

製品の状態	Liquid
保存方法	Shipped at 4°C. Store at +4°C short term (1-2 weeks). Upon delivery aliquot. Store at -20°C or -80°C. Avoid freeze / thaw cycle.
バッファー	Preservative: 0.02% Sodium Azide Constituents: 1% BSA, PBS, pH 7.4
精製度	Immunogen affinity purified
ポリ/モノ	ポリクローナル
アイソタイプ	IgG

アプリケーション

Our [Abpromise guarantee](#) covers the use of **ab63772** in the following tested applications.

The application notes include recommended starting dilutions; optimal dilutions/concentrations should be determined by the end user.

アプリケーション	Abreviews	特記事項
----------	-----------	------

アプリケーション	Abreviews	特記事項
----------	-----------	------

WB Use a concentration of 1 µg/ml. Detects a band of approximately 40 kDa (predicted molecular weight: 40 kDa).

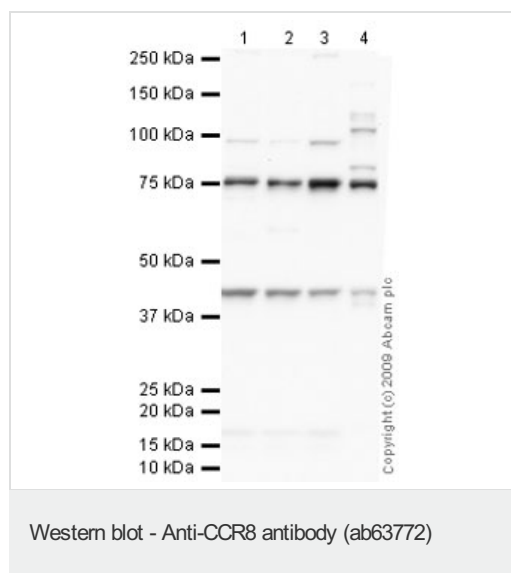
ターゲット情報

機能 Receptor for the chemokine CCL1/SCYA1/I-309. May regulate monocyte chemotaxis and thymic cell line apoptosis. Alternative coreceptor with CD4 for HIV-1 infection.

配列類似性 Belongs to the G-protein coupled receptor 1 family.

細胞内局在 Cell membrane.

画像



All lanes : Anti-CCR8 antibody (ab63772) at 1 µg/ml

Lane 1 : SK N SH (Human neuroblastoma) Whole Cell Lysate

Lane 2 : A498 (Human Kidney Carcinoma) Whole Cell Lysate

Lane 3 : HCT 116 (Human Colorectal Carcinoma) Whole Cell Lysate

Lane 4 : Spinal Cord (Mouse) Tissue Lysate

Lysates/proteins at 10 µg per lane.

Secondary

All lanes : Goat polyclonal to Rabbit IgG - H&L - Pre-Adsorbed (HRP) at 1/3000 dilution

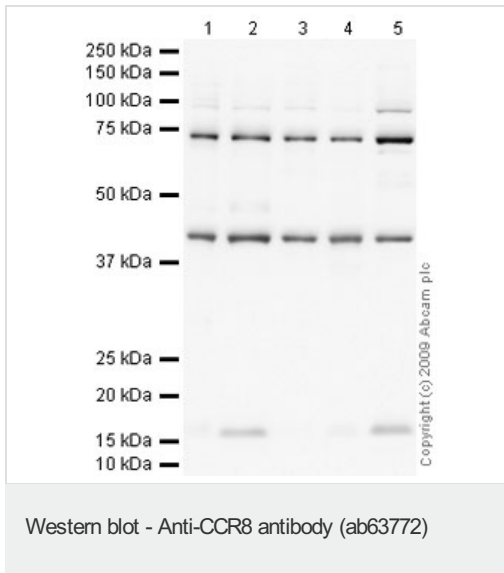
Developed using the ECL technique.

Performed under reducing conditions.

Predicted band size: 40 kDa

Observed band size: 40 kDa

Additional bands at: 75 kDa. We are unsure as to the identity of these extra bands.



All lanes : Anti-CCR8 antibody (ab63772) at 1 µg/ml

Lane 1 : Thymus (Mouse) Tissue Lysate

Lane 2 : Thymus (Rat) Tissue Lysate

Lane 3 : Spleen (Mouse) Tissue Lysate

Lane 4 : Spleen (Rat) Tissue Lysate

Lane 5 : MEF1 (Mouse embryonic fibroblast cell line) Whole Cell Lysate

Lysates/proteins at 10 µg per lane.

Secondary

All lanes : Goat polyclonal to Rabbit IgG - H&L - Pre-Adsorbed (HRP) at 1/3000 dilution

Developed using the ECL technique.

Performed under reducing conditions.

Predicted band size: 40 kDa

Observed band size: 40 kDa

Additional bands at: 75 kDa. We are unsure as to the identity of these extra bands.

Exposure time: 30 seconds

Please note: All products are "FOR RESEARCH USE ONLY AND ARE NOT INTENDED FOR DIAGNOSTIC OR THERAPEUTIC USE"

Our Abpromise to you: Quality guaranteed and expert technical support

- Replacement or refund for products not performing as stated on the datasheet
- Valid for 12 months from date of delivery
- Response to your inquiry within 24 hours
- We provide support in Chinese, English, French, German, Japanese and Spanish
- Extensive multi-media technical resources to help you
- We investigate all quality concerns to ensure our products perform to the highest standards

If the product does not perform as described on this datasheet, we will offer a refund or replacement. For full details of the Abpromise, please visit <http://www.abcam.co.jp/abpromise> or contact our technical team.

Terms and conditions

- Guarantee only valid for products bought direct from Abcam or one of our authorized distributors