

Product datasheet

Anti-CCDC98 antibody ab113278

画像数 1

製品の概要

製品名	Anti-CCDC98 antibody
製品の詳細	Rabbit polyclonal to CCDC98
由来種	Rabbit
アプリケーション	適用あり: IHC-P
種交差性	交差種: Human 交差が予測される動物種: Rhesus monkey, Orangutan
免疫原	Synthetic peptide, corresponding to a region within amino acids 400-409 of Human CCDC98 (NP_620775.2)
ポジティブ・コントロール	Human Ovarian Carcinoma and Testicular Seminoma tissue.

製品の特性

製品の状態	Liquid
保存方法	Shipped at 4°C. Upon delivery aliquot and store at -20°C. Avoid freeze / thaw cycles.
バッファー	Preservative: 0.09% Sodium azide Constituents: 99% Tris buffered saline, 0.1% BSA
精製度	Immunogen affinity purified
ポリ/モノ	ポリクローナル
アイソタイプ	IgG

アプリケーション

Our [Abpromise guarantee](#) covers the use of **ab113278** in the following tested applications.

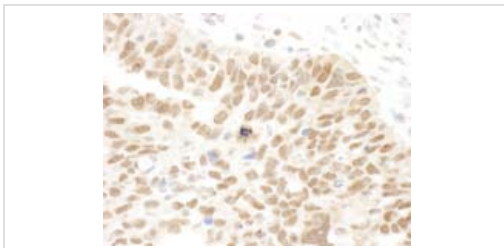
The application notes include recommended starting dilutions; optimal dilutions/concentrations should be determined by the end user.

アプリケーション	Abreviews	特記事項
IHC-P		1/100 - 1/500. Epitope exposure is recommended. Epitope exposure with citrate buffer will enhance staining.

ターゲット情報

機能	Component of the BRCA1-A complex, a complex that specifically recognizes 'Lys-63'-linked ubiquitinated histones H2A and H2AX at DNA lesions sites, leading to target the BRCA1-BARD1 heterodimer to sites of DNA damage at double-strand breaks (DSBs). The BRCA1-A complex also possesses deubiquitinase activity that specifically removes 'Lys-63'-linked ubiquitin on histones H2A and H2AX. In the BRCA1-A complex, it acts as a central scaffold protein that assembles the various components of the BRCA1-A complex and mediates the recruitment of BRCA1.
配列類似性	Belongs to the FAM175 family. Abraxas subfamily.
ドメイン	The MPN-like region is similar to the MPN (JAB/Mov34) domain. Its presence reveals similarities between the structure of the 19S proteasome and the BRCA1-A complexes.
翻訳後修飾	Phosphorylation of Ser-406 of the pSXXF motif by ATM or ATR constitutes a specific recognition motif for the BRCT domain of BRCA1. Phosphorylated upon DNA damage, probably by ATM or ATR.
細胞内局在	Nucleus. Localizes at sites of DNA damage at double-strand breaks.

画像



Detection of Human CCDC98 by Immunohistochemistry.

Sample: FFPE section of Human ovarian carcinoma. ab113278 used at a dilution of 1/250. Detection: DAB staining.

Immunohistochemistry (Formalin/PFA-fixed paraffin-embedded sections) - Anti-CCDC98 antibody (ab113278)

Please note: All products are "FOR RESEARCH USE ONLY AND ARE NOT INTENDED FOR DIAGNOSTIC OR THERAPEUTIC USE"

Our Abpromise to you: Quality guaranteed and expert technical support

- Replacement or refund for products not performing as stated on the datasheet
- Valid for 12 months from date of delivery
- Response to your inquiry within 24 hours
- We provide support in Chinese, English, French, German, Japanese and Spanish
- Extensive multi-media technical resources to help you
- We investigate all quality concerns to ensure our products perform to the highest standards

If the product does not perform as described on this datasheet, we will offer a refund or replacement. For full details of the Abpromise, please visit <http://www.abcam.co.jp/abpromise> or contact our technical team.

Terms and conditions

- Guarantee only valid for products bought direct from Abcam or one of our authorized distributors