

Product datasheet

CAMKIV overexpression 293T lysate (whole cell) ab94283

画像数 2

製品の概要

製品名	CAMKIV overexpression 293T lysate (whole cell)
特記事項	ab94283 is a 293T cell transfected lysate in which Human CAMKIV has been transiently over-expressed using a pCMV-CAMKIV plasmid. The lysate is provided in 1X Sample Buffer. Note: For more details about how the transfected lysate was prepared view preparation notes
アプリケーション	適用あり: WB

法規制情報

医薬用外劇物

製品の特性

製品の状態	Liquid
保存方法	Shipped on dry ice. Upon delivery aliquot and store at -20°C. Avoid freeze / thaw cycles.
バッファー	pH: 6.80 Constituent: 100% 1x Sample Buffer
精製度	Whole Cell Lysate
背景	Function: Calcium/calmodulin-dependent protein kinase belonging to a proposed calcium-triggered signaling cascade. May be involved in transcriptional regulation. May be involved in regulation of microtubule dynamics. In vitro, phosphorylates CREB1, CREBBP, PRM2, MEF2A, MEF2D and STMN1/OP18. May be involved in spermatogenesis. May play a role in the consolidation/retention of hippocampus-dependent long-term memory. Tissue specificity: Expressed in epithelial ovarian cancer tissue. Similarity: Belongs to the protein kinase superfamily. CAMK Ser/Thr protein kinase family. CaMK subfamily. Contains 1 protein kinase domain. PTM: Autophosphorylated and phosphorylated by CAMKK1 and CAMKK2 (By similarity). Dephosphorylated by serine/threonine protein phosphatase 2A, probably on Thr-200.

アプリケーション

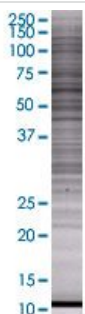
Our [Abpromise guarantee](#) covers the use of **ab94283** in the following tested applications.

The application notes include recommended starting dilutions; optimal dilutions/concentrations should be determined by the end user.

WB

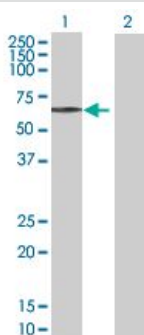
Use at an assay dependent dilution.

画像



SDS-PAGE - CAMKIV 293T Transfected Lysate -
(positive control) (ab94283)

ab94283 at 15µg/lane on an SDS-PAGE gel.



Western blot - CAMKIV 293T Transfected Lysate -
(positive control) (ab94283)

All lanes : Anti-CAMKIV antibody (ab88544)
at 1/500 dilution

Lane 1 : CAMKIV overexpression 293T lysate
(whole cell) (ab94283)

Lane 2 : 293T Non Transfected Lysate

Lysates/proteins at 25 µg per lane.

Secondary

All lanes : Goat Anti-mouse IgG (H and L)
HRP conjugated at 1/2500 dilution

Please note: All products are "FOR RESEARCH USE ONLY AND ARE NOT INTENDED FOR DIAGNOSTIC OR THERAPEUTIC USE"

Our Abpromise to you: Quality guaranteed and expert technical support

- Replacement or refund for products not performing as stated on the datasheet
- Valid for 12 months from date of delivery
- Response to your inquiry within 24 hours
- We provide support in Chinese, English, French, German, Japanese and Spanish
- Extensive multi-media technical resources to help you
- We investigate all quality concerns to ensure our products perform to the highest standards

If the product does not perform as described on this datasheet, we will offer a refund or replacement. For full details of the Abpromise,

please visit <http://www.abcam.co.jp/abpromise> or contact our technical team.

Terms and conditions

- Guarantee only valid for products bought direct from Abcam or one of our authorized distributors