

Product datasheet

Anti-CALHM2 antibody ab121446

画像数 3

製品の概要

製品名	Anti-CALHM2 antibody
製品の詳細	Rabbit polyclonal to CALHM2
アプリケーション	<b>適用あり:</b> ICC/IF, IHC-P, WB
種交差性	<b>交差種:</b> Mouse, Rat, Human
免疫原	amino acids 124-185 (RGEAYVCALS EFVDPSSLTA REEHFPSAHA TEILARFPCK ENPDNLSDFR EEVSRRLRYE SQ) of Human CALHM2 (Q9HA72). <a href="#">Run BLAST with ExPASy</a> <a href="#">Run BLAST with NCBI</a>
ポジティブ・コントロール	Human colon tissue; RT-4 and U-251 MG cell lysates; Human Plasma, Liver and Tonsil lysates

製品の特性

製品の状態	Liquid
保存方法	Shipped at 4°C. Upon delivery aliquot and store at -20°C. Avoid freeze / thaw cycles.
バッファー	pH: 7.20 Preservative: 0.02% Sodium azide Constituents: 59% PBS, 40% Glycerol
精製度	Immunogen affinity purified
ポリ/モノ	ポリクローナル
アイソタイプ	IgG

アプリケーション

Our [Abpromise guarantee](#) covers the use of **ab121446** in the following tested applications.

The application notes include recommended starting dilutions; optimal dilutions/concentrations should be determined by the end user.

アプリケーション	Abreviews	特記事項
----------	-----------	------

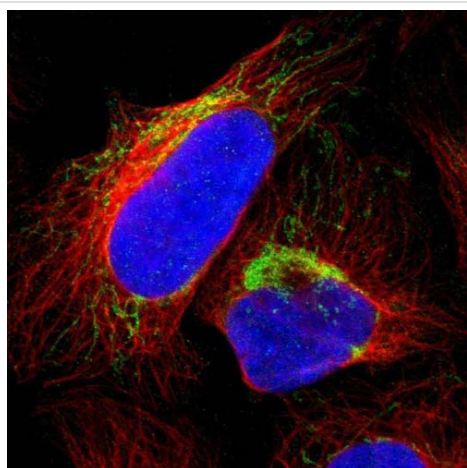
ICC/IF	Use a concentration of 1 - 4 µg/ml. Recommend PFA Fixation and Triton X-100 treatment
--------	--

アプリケーション	Abreviews	特記事項
IHC-P		1/200 - 1/500. Perform heat mediated antigen retrieval with citrate buffer pH 6 before commencing with IHC staining protocol.
WB		1/250 - 1/500.

## ターゲット情報

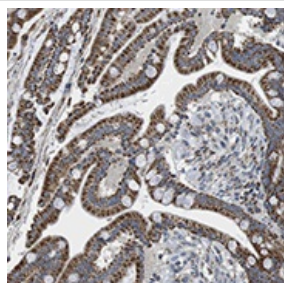
配列類似性	Belongs to the FAM26 family.
細胞内局在	Membrane.

## 画像



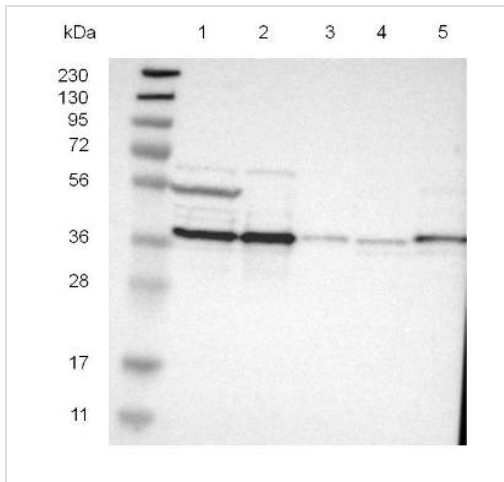
Immunofluorescent staining of Human cell line U-2 OS shows positivity in mitochondria. Recommended concentration of ab121446 1-4 µg/ml. Cells treated with PFA/Triton X-100.

Immunocytochemistry/ Immunofluorescence - Anti-CALHM2 antibody (ab121446)



ab121446, at 1/400 dilution, staining CALHM2 in paraffin-embedded Human colon tissue by Immunohistochemistry.

Immunohistochemistry (Formalin/PFA-fixed paraffin-embedded sections) - Anti-CALHM2 antibody (ab121446)



Western blot - Anti-CALHM2 antibody (ab121446)

**All lanes :** Anti-CALHM2 antibody  
(ab121446) at 1/250 dilution

**Lane 1 :** RT-4 cell lysate.

**Lane 2 :** U-251 MG cell lysate.

**Lane 3 :** Human Plasma

**Lane 4 :** Human liver lysate.

**Lane 5 :** Human tonsil lysate.

Developed using the ECL technique

**Please note:** All products are "FOR RESEARCH USE ONLY AND ARE NOT INTENDED FOR DIAGNOSTIC OR THERAPEUTIC USE"

### Our Abpromise to you: Quality guaranteed and expert technical support

- Replacement or refund for products not performing as stated on the datasheet
- Valid for 12 months from date of delivery
- Response to your inquiry within 24 hours
- We provide support in Chinese, English, French, German, Japanese and Spanish
- Extensive multi-media technical resources to help you
- We investigate all quality concerns to ensure our products perform to the highest standards

If the product does not perform as described on this datasheet, we will offer a refund or replacement. For full details of the Abpromise, please visit <http://www.abcam.co.jp/abpromise> or contact our technical team.

### Terms and conditions

- Guarantee only valid for products bought direct from Abcam or one of our authorized distributors