




## Product datasheet

# Anti-C5ORF4 antibody ab60131

画像数 2

### 製品の概要

製品名	Anti-C5ORF4 antibody
製品の詳細	Rabbit polyclonal to C5ORF4
由来種	Rabbit
アプリケーション	<b>適用あり:</b> WB, IHC-P, ELISA
種交差性	<b>交差種:</b> Human <b>交差が予測される動物種:</b> Rat, Rabbit, Horse, Guinea pig, Cow, Dog, Pig 
免疫原	Synthetic peptide corresponding to Human C5ORF4 aa 1-50 (N terminal). Sequence: MKGEAGHMLHNEKSKQEGHIWGSRRRTAFILGSGLLSFVAFWNSVTWHLQ <div style="text-align: right;">  <a href="#">Run BLAST with</a>  <a href="#">Run BLAST with</a> </div>
ポジティブ・コントロール	HepG2 cell lysate, human kidney tissue.

### 製品の特性

製品の状態	Liquid
保存方法	Shipped at 4°C. Upon delivery aliquot and store at -20°C. Avoid freeze / thaw cycles.
バッファー	Preservative: None Constituents: 2% Sucrose, PBS
精製度	Immunogen affinity purified
ポリ/モノ	ポリクローナル
アイソタイプ	IgG

### アプリケーション

Our [Abpromise guarantee](#) covers the use of **ab60131** in the following tested applications.

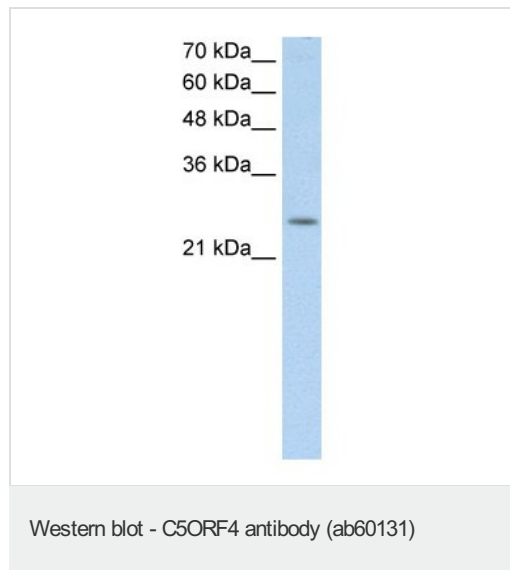
The application notes include recommended starting dilutions; optimal dilutions/concentrations should be determined by the end user.

アプリ ケーション	Abreviews	特記事項
WB		Use a concentration of 0.25 µg/ml. Detects a band of approximately 25 kDa (predicted molecular weight: 21 kDa). Good results were obtained when blocked with 5% non-fat dry milk in 0.05% PBS-T.
IHC-P		Use a concentration of 4 - 8 µg/ml.
ELISA		Use at an assay dependent concentration. ELISA titre using peptide based assay: 1:12500.

## ターゲット情報

関連性	C5ORF4 belongs to the Sterol Desaturase family. It's function remains unknown. The Sterol Desaturase family includes C-5 sterol desaturase and C-4 sterol methyl oxidase. Members of this family are involved in cholesterol biosynthesis and biosynthesis of a plant cuticular wax. These enzymes contain many conserved histidine residues. Members of this family are integral membrane proteins. C5ORF4 has been identified as a putative tumour suppressor.
細胞内局在	Cell Membrane (Potential).

## 画像



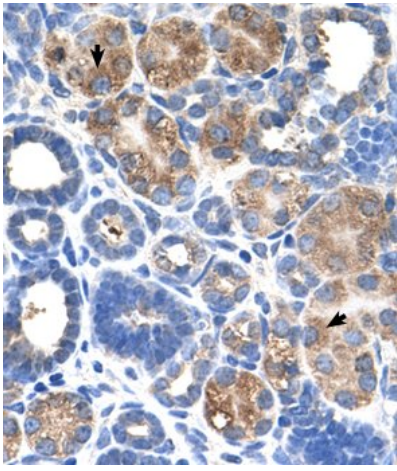
Anti-C5ORF4 antibody (ab60131) at 0.25 µg/ml + HepG2 cell lysate at 10 µg

### Secondary

HRP conjugated anti-Rabbit IgG at 1/ 50,000 - 1/ 100,000 dilution.

**Predicted band size:** 21 kDa

**Observed band size:** 25 kDa



Immunohistochemistry (Formalin/PFA-fixed paraffin-embedded sections) analysis of human kidney tissue labelling C5ORF4 with ab60131 at 4-8 $\mu$ g/ml. Arrows indicate positively labelled epithelial cells of the renal tubule. Magnification: 400X.

Immunohistochemistry (Formalin/PFA-fixed paraffin-embedded sections) - Anti-C5ORF4 antibody (ab60131)

**Please note:** All products are "FOR RESEARCH USE ONLY AND ARE NOT INTENDED FOR DIAGNOSTIC OR THERAPEUTIC USE"

### Our Abpromise to you: Quality guaranteed and expert technical support

- Replacement or refund for products not performing as stated on the datasheet
- Valid for 12 months from date of delivery
- Response to your inquiry within 24 hours
- We provide support in Chinese, English, French, German, Japanese and Spanish
- Extensive multi-media technical resources to help you
- We investigate all quality concerns to ensure our products perform to the highest standards

If the product does not perform as described on this datasheet, we will offer a refund or replacement. For full details of the Abpromise, please visit <http://www.abcam.co.jp/abpromise> or contact our technical team.

### Terms and conditions

- Guarantee only valid for products bought direct from Abcam or one of our authorized distributors