


Product datasheet

Anti-C2orf60 antibody ab84682

画像数 1

製品の概要

| | |
|--------------|---|
| 製品名 | Anti-C2orf60 antibody |
| 製品の詳細 | Rabbit polyclonal to C2orf60 |
| アプリケーション | 適用あり: WB |
| 種交差性 | 交差種: Human 交差が予測される動物種: Mouse, Rat, Rabbit, Horse, Guinea pig, Cow, Cat, Dog, Pig  |
| 免疫原 | Synthetic peptide corresponding to a region within internal sequence amino acids 266-315 (NKDPTAASRA AQILDRALKT LAELPEEYRD FYARRMVLHI QDKAYSKNSE) of human C2orf60 (NP_001034782). Run BLAST with ExPASy Run BLAST with NCBI |
| ポジティブ・コントロール | Human fetal muscle lysate. |

製品の特性

| | |
|-----------|--|
| 製品の状態 | Liquid |
| 保存方法 | Shipped at 4°C. Upon delivery aliquot and store at -20°C. Avoid repeated freeze / thaw cycles. |
| バッファー | Preservative: None Constituents: 2% Sucrose, PBS |
| 精製度 | Immunogen affinity purified |
| 特記事項 (精製) | Purified by peptide affinity chromatography method. |
| ポリ/モノ | ポリクローナル |
| アイソタイプ | IgG |

アプリケーション

Our [Abpromise guarantee](#) covers the use of **ab84682** in the following tested applications.

The application notes include recommended starting dilutions; optimal dilutions/concentrations should be determined by the end user.

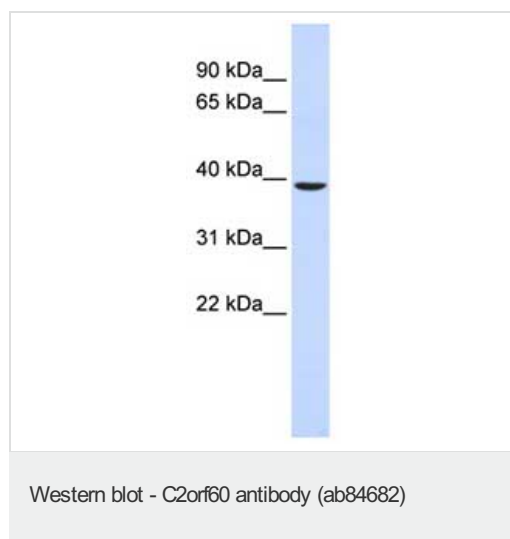
| アプリケーション | Abreviews | 特記事項 |
|----------|-----------|------|
| | | |

| アプリケーション | Abreviews | 特記事項 |
|----------|-----------|--|
| WB | | Use a concentration of 1 µg/ml. Predicted molecular weight: 37 kDa. Good results were obtained when blocked with 5% non-fat dry milk in 0.05% PBS-T. |

ターゲット情報

関連性 The function of the C2orf60 protein remains unknown.

画像



Anti-C2orf60 antibody (ab84682) at 1 µg/ml
(in 5% skim milk / PBS buffer) + human fetal
muscle lysate at 10 µg

Secondary

HRP conjugated anti-Rabbit IgG at 1/50000
dilution

Predicted band size : 37 kDa

Observed band size : 37 kDa

Please note: All products are "FOR RESEARCH USE ONLY AND ARE NOT INTENDED FOR DIAGNOSTIC OR THERAPEUTIC USE"

Our Abpromise to you: Quality guaranteed and expert technical support

- Replacement or refund for products not performing as stated on the datasheet
- Valid for 12 months from date of delivery
- Response to your inquiry within 24 hours
- We provide support in Chinese, English, French, German, Japanese and Spanish
- Extensive multi-media technical resources to help you
- We investigate all quality concerns to ensure our products perform to the highest standards

If the product does not perform as described on this datasheet, we will offer a refund or replacement. For full details of the Abpromise, please visit <http://www.abcam.co.jp/abpromise> or contact our technical team.

Terms and conditions

- Guarantee only valid for products bought direct from Abcam or one of our authorized distributors