


Product datasheet

Anti-C1orf187 antibody ab119707

画像数 2

製品の概要

製品名	Anti-C1orf187 antibody
製品の詳細	Rabbit polyclonal to C1orf187
由来種	Rabbit
アプリケーション	適用あり: WB, ICC
種交差性	交差種: Mouse, Rat, Chicken 交差が予測される動物種: Human 
免疫原	Synthetic peptide coupled to KLH, corresponding to amino acid residues in the C terminal region of Human C1orf187.
ポジティブ・コントロール	Rat PC12 cells and cell lysate; Rat P1 brain, chick E9 brain and adult Mouse brain lysates.
特記事項	Do not aliquot.

製品の特性

製品の状態	Liquid
保存方法	Shipped at 4°C. Store at -20°C. Stable for 12 months at -20°C.
バッファー	Preservative: 0.05% Sodium azide Constituents: 49% PBS, 50% Glycerol, 0.1% BSA
精製度	Immunogen affinity purified
特記事項(精製)	ab119707 was peptide affinity purified.
ポリモノ	ポリクローナル
アイソタイプ	IgG

アプリケーション

Our [Abpromise guarantee](#) covers the use of **ab119707** in the following tested applications.

The application notes include recommended starting dilutions; optimal dilutions/concentrations should be determined by the end user.

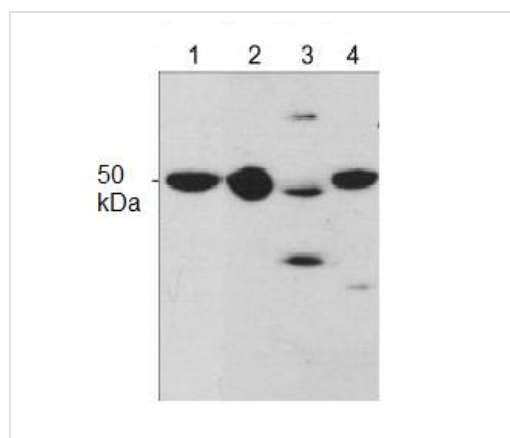
アプリケーション	Abreviews	特記事項
WB		1/1000. Detects a band of approximately 50 kDa (predicted molecular weight: 38 kDa).

アプリケーション	Abreviews	特記事項
ICC		1/100.

## ターゲット情報

<b>機能</b>	Chemorepulsive axon guidance protein required for the development of spinal cord and forebrain commissures. Acts as a chemorepulsive guidance protein for commissural axons during development. Able to inhibit or repel neurite outgrowth from dorsal spinal cord. Inhibits the stabilization of cytosolic beta-catenin (CTNNB1) via its interaction with LRP6, thereby acting as an antagonist of Wnt signaling pathway.
<b>配列類似性</b>	Belongs to the draxin family.
<b>細胞内局在</b>	Secreted.

## 画像



Western blot - Anti-C1orf187 antibody (ab119707)

**All lanes :** Anti-C1orf187 antibody (ab119707) at 1/1000 dilution

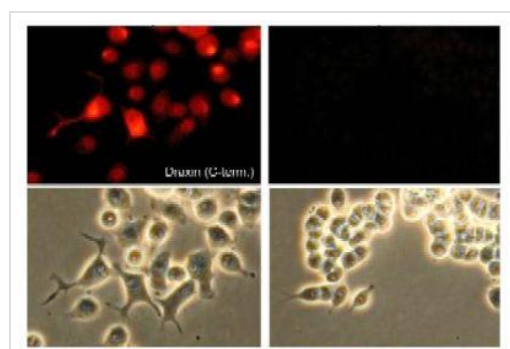
**Lane 1 :** Rat PC12 cell lysate

**Lane 2 :** Rat P1 brain lysate

**Lane 3 :** Adult mouse brain lysate

**Lane 4 :** Chick E9 brain lysate

**Predicted band size:** 38 kDa



Immunocytochemistry - Anti-C1orf187 antibody (ab119707)

ab119707 at 1/100 dilution staining C1orf187 in Rat PC12 cells, differentiated with NGF, by Immunocytochemistry in the absence (left) or presence (right) of blocking peptide. The lower images show corresponding phase images. detection used an appropriate secondary antibody conjugated to Cy3.

**Please note:** All products are "FOR RESEARCH USE ONLY AND ARE NOT INTENDED FOR DIAGNOSTIC OR THERAPEUTIC USE"

## **Our Abpromise to you: Quality guaranteed and expert technical support**

---

- Replacement or refund for products not performing as stated on the datasheet
- Valid for 12 months from date of delivery
- Response to your inquiry within 24 hours
  
- We provide support in Chinese, English, French, German, Japanese and Spanish
- Extensive multi-media technical resources to help you
- We investigate all quality concerns to ensure our products perform to the highest standards

If the product does not perform as described on this datasheet, we will offer a refund or replacement. For full details of the Abpromise, please visit <http://www.abcam.co.jp/abpromise> or contact our technical team.

## **Terms and conditions**

---

- Guarantee only valid for products bought direct from Abcam or one of our authorized distributors