

Product datasheet

Anti-BubR1 antibody ab28192

3 References [画像数 1](#)

製品の概要

製品名	Anti-BubR1 antibody
製品の詳細	Sheep polyclonal to BubR1
由来種	Sheep
アプリケーション	適用あり: WB, IP, ICC/IF
種交差性	交差種: Mouse
免疫原	Recombinant fragment, corresponding to amino acids 883-1052 of Mouse BubR1
ポジティブ・コントロール	Mitotic NIH/3T3 cells

製品の特性

製品の状態	Liquid
保存方法	Shipped at 4°C. Upon delivery aliquot and store at -20°C. Avoid freeze / thaw cycles.
バッファー	Preservative: 0.08% Sodium Azide Constituents: PBS
精製度	Ammonium Sulphate Precipitation
ポリ/モノ	ポリクローナル
アイソタイプ	IgG

アプリケーション

Our [Abpromise guarantee](#) covers the use of **ab28192** in the following tested applications.

The application notes include recommended starting dilutions; optimal dilutions/concentrations should be determined by the end user.

アプリケーション	Abreviews	特記事項
WB		Use a concentration of 1 - 10 µg/ml. Detects a band of approximately 130 kDa (predicted molecular weight: 119 kDa).
IP		Use a concentration of 1 - 10 µg/ml.

アプリケーション	Abreviews	特記事項
ICC/IF		Use at an assay dependent dilution.

ターゲット情報

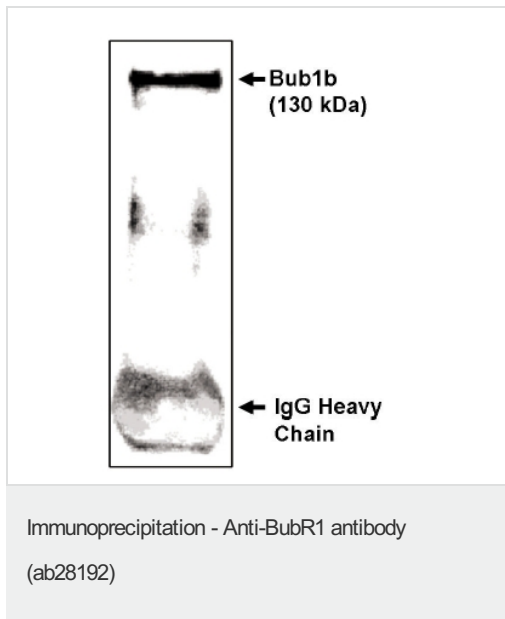
機能	Essential component of the mitotic checkpoint. Required for normal mitosis progression. The mitotic checkpoint delays anaphase until all chromosomes are properly attached to the mitotic spindle. One of its checkpoint functions is to inhibit the activity of the anaphase-promoting complex/cyclosome (APC/C) by blocking the binding of CDC20 to APC/C, independently of its kinase activity. The other is to monitor kinetochore activities that depend on the kinetochore motor CENPE. Required for kinetochore localization of CENPE. Negatively regulates PLK1 activity in interphase cells and suppresses centrosome amplification. Also implicated in triggering apoptosis in polyploid cells that exit aberrantly from mitotic arrest. May play a role for tumor suppression.
組織特異性	Highly expressed in thymus followed by spleen. Preferentially expressed in tissues with a high mitotic index.
関連疾患	<p>Note=Defects in BUB1B are associated with tumor formation.</p> <p>Defects in BUB1B are the cause of premature chromatid separation trait (PCS) [MIM:176430]. PCS consists of separate and splayed chromatids with discernible centromeres and involves all or most chromosomes of a metaphase. It is found in up to 2% of metaphases in cultured lymphocytes from approximately 40% of normal individuals. When PCS is present in 5% or more of cells, it is known as the heterozygous PCS trait and has no obvious phenotypic effect, although some have reported decreased fertility. Inheritance is autosomal dominant.</p> <p>Defects in BUB1B are the cause of mosaic variegated aneuploidy syndrome (MVA) [MIM:257300]. MVA is a severe autosomal recessive developmental disorder characterized by mosaic aneuploidies, predominantly trisomies and monosomies, involving multiple different chromosomes and tissues. The proportion of aneuploid cells varies but is usually more than 25% and is substantially greater than in normal individuals. Affected individuals typically present with severe intrauterine growth retardation and microcephaly. Eye anomalies, mild dysmorphism, variable developmental delay, and a broad spectrum of additional congenital abnormalities and medical conditions may also occur. The risk of malignancy is high, with rhabdomyosarcoma, Wilms tumor and leukemia reported in several cases. MVA is caused by biallelic mutations in the BUB1B gene.</p>
配列類似性	<p>Belongs to the protein kinase superfamily. Ser/Thr protein kinase family. BUB1 subfamily.</p> <p>Contains 1 BUB1 N-terminal domain.</p> <p>Contains 1 protein kinase domain.</p>
ドメイン	<p>The D-box targets the protein for rapid degradation by ubiquitin-dependent proteolysis during the transition from mitosis to interphase.</p> <p>The BUB1 N-terminal domain directs kinetochore localization and binding to BUB3.</p>
翻訳後修飾	<p>Proteolytically cleaved by caspase-3 in a cell cycle specific manner. The cleavage might be involved in the durability of the cell cycle delay. Caspase-3 cleavage is associated with abrogation of the mitotic checkpoint. The major site of cleavage is at Asp-610.</p> <p>Acetylation at Lys-250 regulates its degradation and timing in anaphase entry.</p> <p>Ubiquitinated. Degradated by the proteasome.</p> <p>Sumoylated by SUMO2 and SUMO3. The sumoylation mediates the association with CENPE at the kinetochore.</p>

Autophosphorylated in vitro. Intramolecular autophosphorylation is stimulated by CENPE. Phosphorylated during mitosis and hyperphosphorylated in mitotically arrested cells. Phosphorylation at Ser-670 and Ser-1043 occurs at kinetochores upon mitotic entry with dephosphorylation at the onset of anaphase.

細胞内局在

Cytoplasm. Nucleus. Chromosome > centromere > kinetochore. Cytoplasm > cytoskeleton > centrosome. Cytoplasmic in interphase cells. Associates with the kinetochores in early prophase. Kinetochore localization requires BUB1, PLK1 and CASC5.

画像



Please note: All products are "FOR RESEARCH USE ONLY AND ARE NOT INTENDED FOR DIAGNOSTIC OR THERAPEUTIC USE"

Our Abpromise to you: Quality guaranteed and expert technical support

- Replacement or refund for products not performing as stated on the datasheet
- Valid for 12 months from date of delivery
- Response to your inquiry within 24 hours
- We provide support in Chinese, English, French, German, Japanese and Spanish
- Extensive multi-media technical resources to help you
- We investigate all quality concerns to ensure our products perform to the highest standards

If the product does not perform as described on this datasheet, we will offer a refund or replacement. For full details of the Abpromise, please visit <http://www.abcam.co.jp/abpromise> or contact our technical team.

Terms and conditions

- Guarantee only valid for products bought direct from Abcam or one of our authorized distributors