

Product datasheet

Anti-Bcl-XL antibody [E18] ab32370

リコンビナント RabMAb[®]

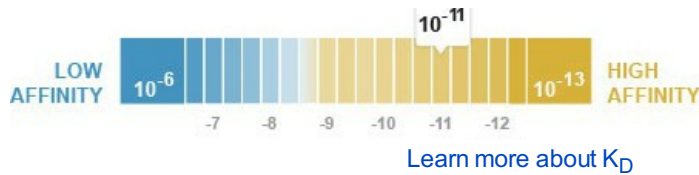
★★★★☆ 2 Abreviews 47 References 画像数 12

製品の概要

製品名	Anti-Bcl-XL antibody [E18]
製品の詳細	Rabbit monoclonal [E18] to Bcl-XL
由来種	Rabbit
特異性	This antibody should recognize Bcl-XL, Bcl-xS and Bcl-x(beta) as the immunogen sequence is common to them. The antibody does not cross-react with other Bcl-2 family members.
アプリケーション	適用あり: WB, IHC-P, ICC/IF, Flow Cyt, IP
種交差性	交差種: Mouse, Rat, Human 交差が予測される動物種: Pig
免疫原	Synthetic peptide within Human Bcl-XL aa 1-100. The exact sequence is proprietary. Database link: Q07817
ポジティブ・コントロール	WB: Jurkat, K562, C6, RAW264.7, PC-12 NIH/3T3 cell lysates. IHC-P: Human endometrium and prostate carcinoma tissues. ICC/IF: HepG2 and HeLa cells. Flow Cyt: DU145 and Jurkat cells. IP: Jurkat cell lysate.
特記事項	A trial size is available to purchase for this antibody. Our RabMAb [®] technology is a patented hybridoma-based technology for making rabbit monoclonal antibodies. For details on our patents, please refer to RabMAb[®] patents We are constantly working hard to ensure we provide our customers with best in class antibodies. As a result of this work we are pleased to now offer this antibody in purified format. We are in the process of updating our datasheets. The purified format is designated 'PUR' on our product labels. If you have any questions regarding this update, please contact our Scientific Support team. This product is a recombinant rabbit monoclonal antibody.

製品の特性

製品の状態	Liquid
保存方法	Shipped at 4°C. Store at +4°C short term (1-2 weeks). Upon delivery aliquot. Store at -20°C. Avoid freeze / thaw cycle.
解離定数 (K_D 値)	K _D = 6.50 x 10 ⁻¹¹ M



バッファー	pH: 7.20 Preservative: 0.01% Sodium azide Constituents: 59% PBS, 40% Glycerol, 0.05% BSA
精製度	Protein A purified
ポリモノ	モノクローナル
クローン名	E18
アイソタイプ	IgG

アプリケーション

Our [Abpromise guarantee](#) covers the use of **ab32370** in the following tested applications.

The application notes include recommended starting dilutions; optimal dilutions/concentrations should be determined by the end user.

アプリケーション	Abreviews	特記事項
WB	★★★★☆	1/1000. Detects a band of approximately 26 kDa.
IHC-P		1/2000. See IHC antigen retrieval protocols .
ICC/IF		1/100 - 1/500.
Flow Cyt		1/20 - 1/100. ab172730 - Rabbit monoclonal IgG, is suitable for use as an isotype control with this antibody.
IP		1/10 - 1/30.

ターゲット情報

機能	Potent inhibitor of cell death. Inhibits activation of caspases (By similarity). Appears to regulate cell death by blocking the voltage-dependent anion channel (VDAC) by binding to it and preventing the release of the caspase activator, CYC1, from the mitochondrial membrane. Isoform Bcl-X(S) promotes apoptosis.
組織特異性	Bcl-X(S) is expressed at high levels in cells that undergo a high rate of turnover, such as developing lymphocytes. In contrast, Bcl-X(L) is found in tissues containing long-lived postmitotic cells, such as adult brain.
配列類似性	Belongs to the Bcl-2 family.
ドメイン	The BH4 motif is required for anti-apoptotic activity. The BH1 and BH2 motifs are required for both heterodimerization with other Bcl-2 family members and for repression of cell death.

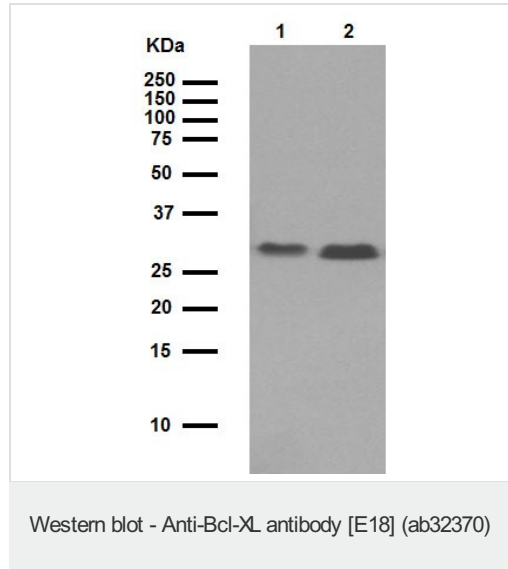
翻訳後修飾

Proteolytically cleaved by caspases during apoptosis. The cleaved protein, lacking the BH4 motif, has pro-apoptotic activity.

細胞内局在

Mitochondrion membrane. Nucleus membrane. Mitochondrial membranes and perinuclear envelope.

画像



All lanes : Anti-Bcl-XL antibody [E18] (ab32370) at 1/1000 dilution (purified)

Lane 1 : Jurkat cell lysate

Lane 2 : K562 cell lysate

Lysates/proteins at 20 µg per lane.

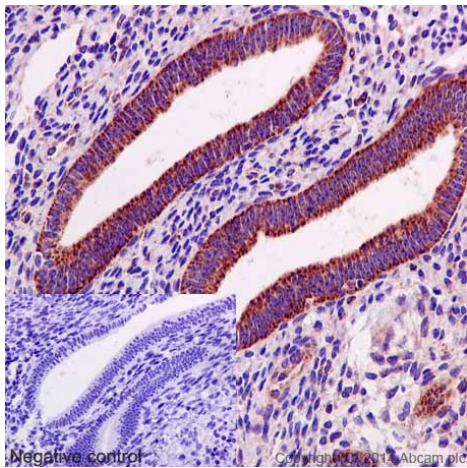
Secondary

All lanes : Peroxidase-conjugated goat anti-rabbit IgG (H+L) at 1/1000 dilution

Observed band size: 26 kDa

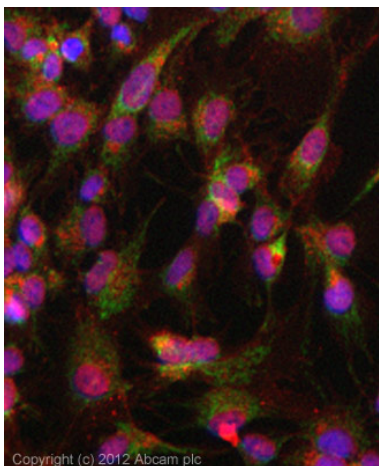
Blocking buffer and concentration: 5%
NFDM/TBST.

Diluting buffer and concentration: 5% NFDM
/TBST.



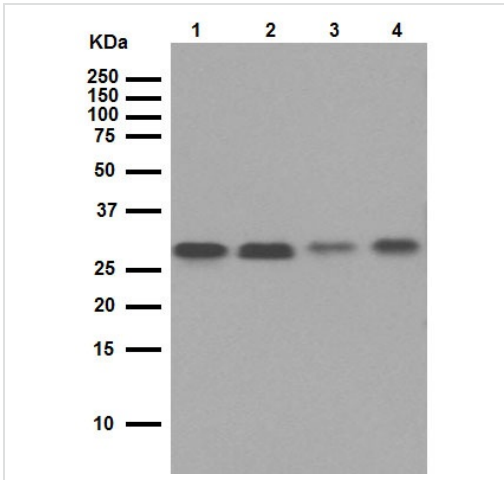
Immunohistochemistry (Formalin/PFA-fixed paraffin-embedded sections) analysis of human endometrium tissue labelling Bcl-XL with purified ab32370 at 1/2000. Heat mediated antigen retrieval was performed using Tris/EDTA buffer pH 9. [ab97051](#), a HRP-conjugated goat anti-rabbit HRP (H+L) was used as the secondary antibody (1/500). Negative control using PBS instead of primary antibody. Counterstained with hematoxylin.

Immunohistochemistry (Formalin/PFA-fixed paraffin-embedded sections) - Anti-Bcl-XL antibody [E18] (ab32370)



ICC/IF image of unpurified ab32370 stained HepG2 cells. The cells were 4% formaldehyde fixed (10 min) and then incubated in 1%BSA / 10% normal goat serum / 0.3M glycine in 0.1% PBS-Tween for 1h to permeabilise the cells and block non-specific protein-protein interactions. The cells were then incubated with the antibody (ab32370, 1/100) overnight at +4°C. The secondary antibody (green) was [ab96899](#), goat anti-rabbit DyLight[®] 488 (IgG; H+L) used at a 1/250 dilution for 1h. Alexa Fluor[®] 594 WGA was used to label plasma membranes (red) at a 1/200 dilution for 1h. DAPI was used to stain the cell nuclei (blue) at a concentration of 1.43µM.

Immunocytochemistry/ Immunofluorescence - Anti-Bcl-XL antibody [E18] (ab32370)



Western blot - Anti-Bcl-XL antibody [E18] (ab32370)

All lanes : Anti-Bcl-XL antibody [E18] (ab32370) at 1/1000 dilution (purified)

Lane 1 : C6 cell lysate

Lane 2 : RAW264.7 cell lysate

Lane 3 : PC-12 cell lysate

Lane 4 : NIH/3T3 cell lysate

Lysates/proteins at 20 µg per lane.

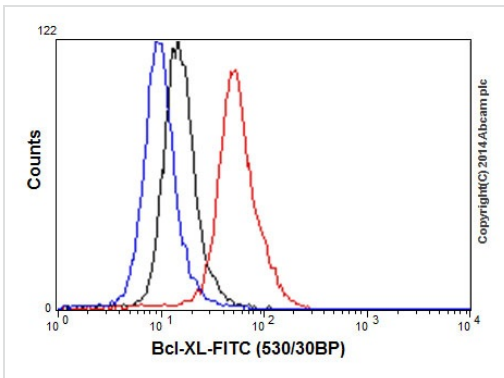
Secondary

All lanes : Peroxidase-conjugated goat anti-rabbit IgG (H+L) at 1/1000 dilution

Observed band size: 26 kDa

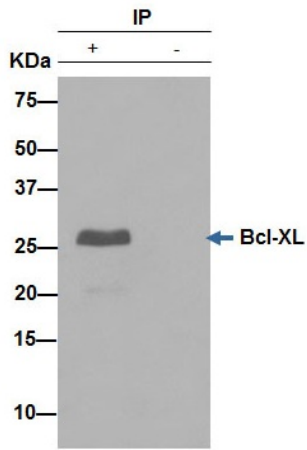
Blocking buffer and concentration: 5% NFDm/TBST.

Diluting buffer and concentration: 5% NFDm /TBST.



Flow Cytometry - Anti-Bcl-XL antibody [E18] (ab32370)

Flow cytometry analysis of Jurkat cells labelling Bcl-XL with purified ab32370 at 1/20 (red). Cells were fixed with 2% paraformaldehyde. A FITC-conjugated goat anti-rabbit IgG (1/150) was used as the secondary antibody. Black - Isotype control, rabbit monoclonal IgG. Blue - Unlabelled control, cells without incubation with primary and secondary antibodies.

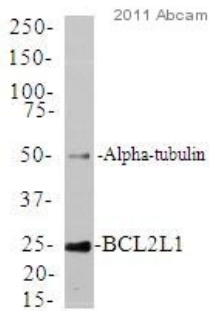


Immunoprecipitation - Anti-Bcl-XL antibody [E18]
(ab32370)

ab32370 (purified) at 1/30
immunoprecipitating Bcl-XL in Jurkat cell
lysate (Lane 1). Lane 2 - PBS. For western
blotting, a HRP-conjugated anti-rabbit IgG,
specific to the non-reduced form of IgG was
used as the secondary antibody (1/1500).

Blocking buffer and concentration: 5%
NFDm/TBST.

Diluting buffer and concentration: 5% NFDm
/TBST.



Western blot - Anti-Bcl-XL antibody [E18] (ab32370)
Image courtesy of an anonymous Abreview.

Anti-Bcl-XL antibody [E18] (ab32370) at
1/500 dilution (unpurified) + whole cell lysate
prepared from a clinical sample of breast
cancer cells at 20 µg

Secondary

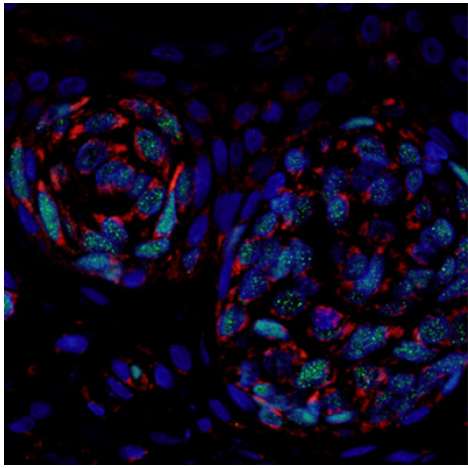
Goat anti-rabbit IgG-HRP at 1/1000 dilution

Developed using the ECL technique.

Observed band size: 26 kDa

Exposure time: 15 minutes

Patient received anthracycline and taxane
neoadjuvant chemotherapy.



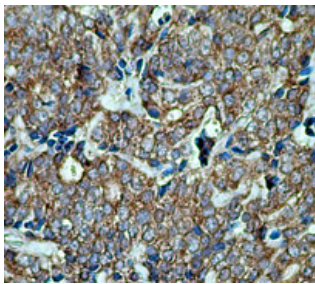
Immunohistochemistry of human primary melanoma, staining Bcl-XL (red) with unpurified ab32370.

Antigen retrieval was performed in EDTA/Tris buffer (pH 8) before being blocked with 10%NGS for one hour at room temperature.

Samples were incubated with primary antibody (1/50) at room temperature for one hour. An AlexaFluor®-conjugated anti-rabbit IgG was used as the secondary antibody.

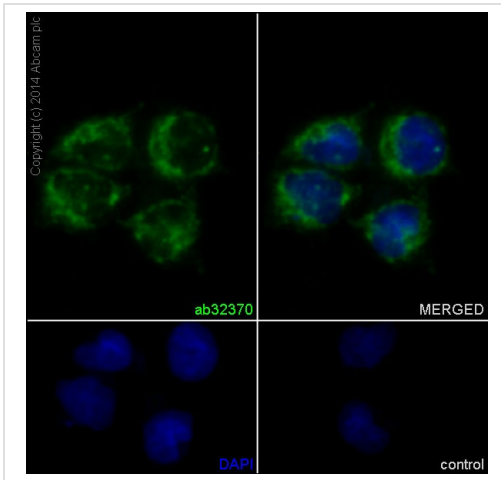
Immunohistochemistry (Formalin/PFA-fixed paraffin-embedded sections) - Anti-Bcl-XL antibody [E18] (ab32370)

Image from Medic S & Ziman M, PLoS One. 2010 Apr 22;5(4):e9977. Fig 5.; doi:10.1371/journal.pone.0009977; April 22, 2010, PLoS ONE 5(4): e9977.



Immunohistochemistry (Formalin/PFA-fixed paraffin-embedded sections) analysis of human prostate carcinoma tissue labelling Bcl-XL with unpurified ab32370 at 1/50.

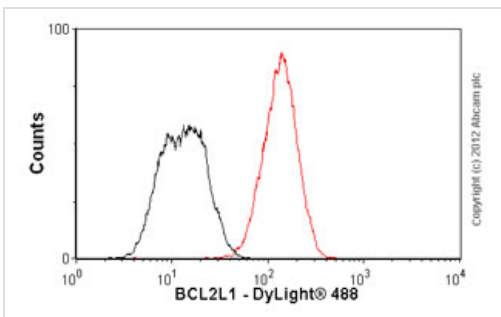
Immunohistochemistry (Formalin/PFA-fixed paraffin-embedded sections) - Anti-Bcl-XL antibody [E18] (ab32370)



Immunocytochemistry/ Immunofluorescence - Anti-Bcl-XL antibody [E18] (ab32370)

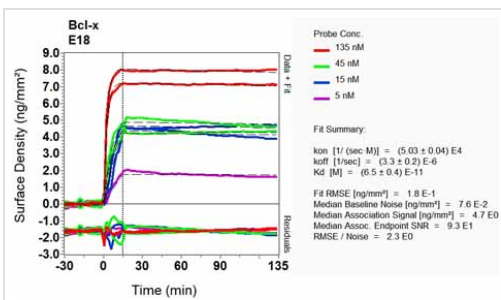
Immunocytochemistry/Immunofluorescence analysis of HeLa cells labelling Bcl-XL with purified ab32370 at 1/500. Cells were fixed with 4% paraformaldehyde and permeabilized with 0.1% Triton X-100. [ab150077](#), a goat anti-rabbit Alexa Fluor[®] 488 (IgG; 1/500) was used as the secondary antibody. DAPI (blue) was used as the nuclear counterstain.

Control: primary antibody (1/500) and secondary antibody, [ab150120](#), an Alexa Fluor[®] 594-conjugated goat anti-mouse IgG (1/500).



Flow Cytometry - Anti-Bcl-XL antibody [E18] (ab32370)

Overlay histogram showing DU145 cells stained with unpurified ab32370 (red line). The cells were fixed with 80% methanol (5 min) and then permeabilized with 0.1% PBS-Tween for 20 min. The cells were then incubated in 1x PBS / 10% normal goat serum / 0.3M glycine to block non-specific protein-protein interactions followed by the antibody (ab32370, 1/100 dilution) for 30 min at 22°C. The secondary antibody used was a goat anti-rabbit DyLight[®] 488 (IgG; H+L) ([ab96899](#)) at 1/500 dilution for 30 min at 22°C. Isotype control antibody (black line) was rabbit IgG (monoclonal) (1µg/1x10⁶ cells) used under the same conditions. Acquisition of >5,000 events was performed.



Other - Anti-Bcl-XL antibody [E18] (ab32370)

Equilibrium dissociation constant (K_D)

Learn more about K_D

[Click here to learn more about \$K_D\$](#)

Our Abpromise to you: Quality guaranteed and expert technical support

- Replacement or refund for products not performing as stated on the datasheet
- Valid for 12 months from date of delivery
- Response to your inquiry within 24 hours

- We provide support in Chinese, English, French, German, Japanese and Spanish
- Extensive multi-media technical resources to help you
- We investigate all quality concerns to ensure our products perform to the highest standards

If the product does not perform as described on this datasheet, we will offer a refund or replacement. For full details of the Abpromise, please visit <http://www.abcam.co.jp/abpromise> or contact our technical team.

Terms and conditions

- Guarantee only valid for products bought direct from Abcam or one of our authorized distributors